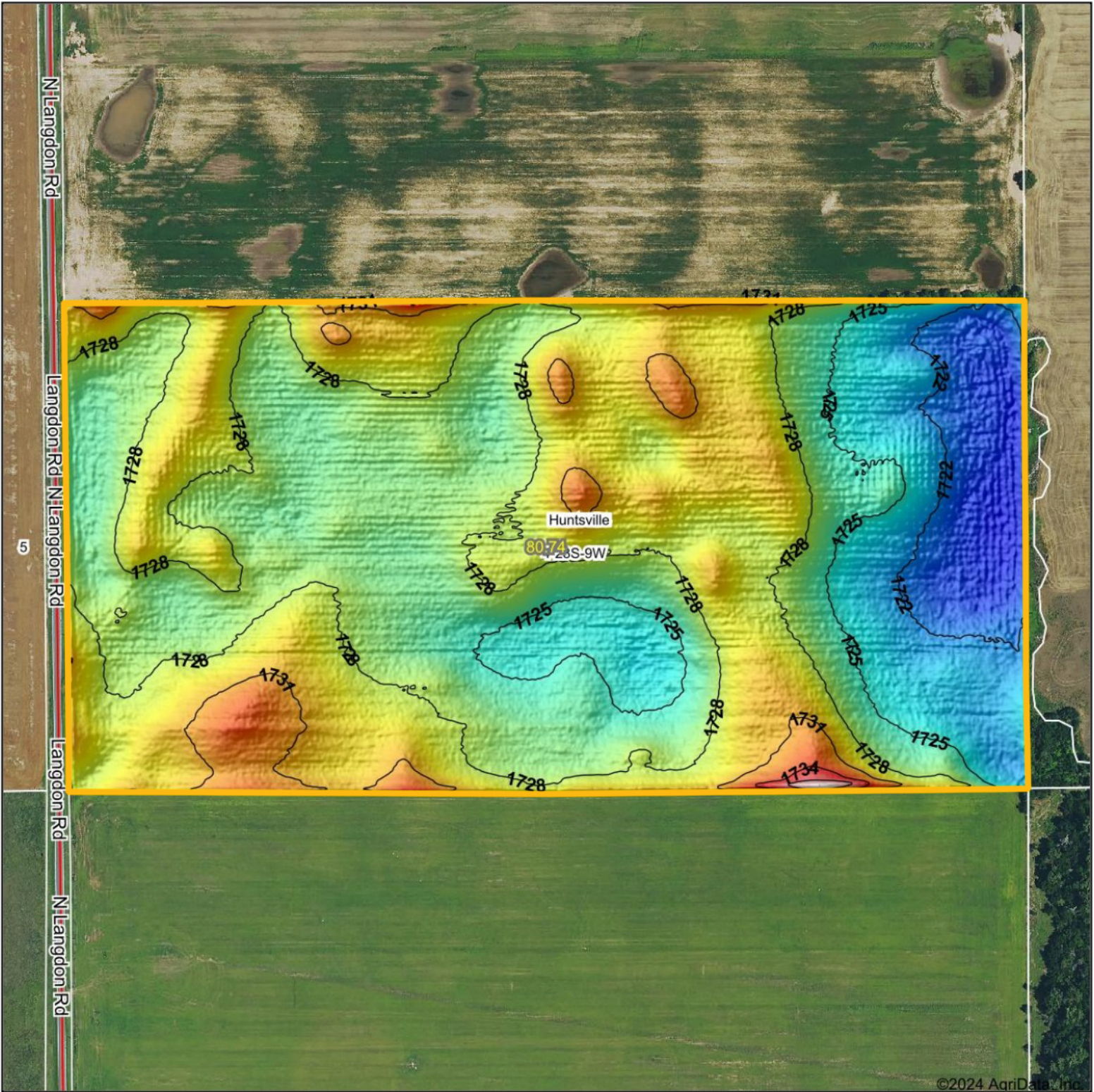
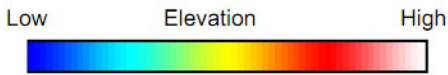


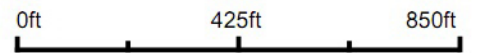
Topography Hillshade



©2024 AgriData, Inc.



Source: USGS 1 meter dem
 Interval(ft): 3
 Min: 1,719.2
 Max: 1,739.3
 Range: 20.1
 Average: 1,727.2
 Standard Deviation: 2.85 ft



4-23S-9W
 Reno County
 Kansas

Boundary Center: 38° 4' 51.03, -98° 19' 16.64

BigIron
 REALTY

Maps Provided By:



© AgriData, Inc. 2023 www.AgriDataInc.com

Field borders provided by Farm Service Agency as of 5/21/2008.