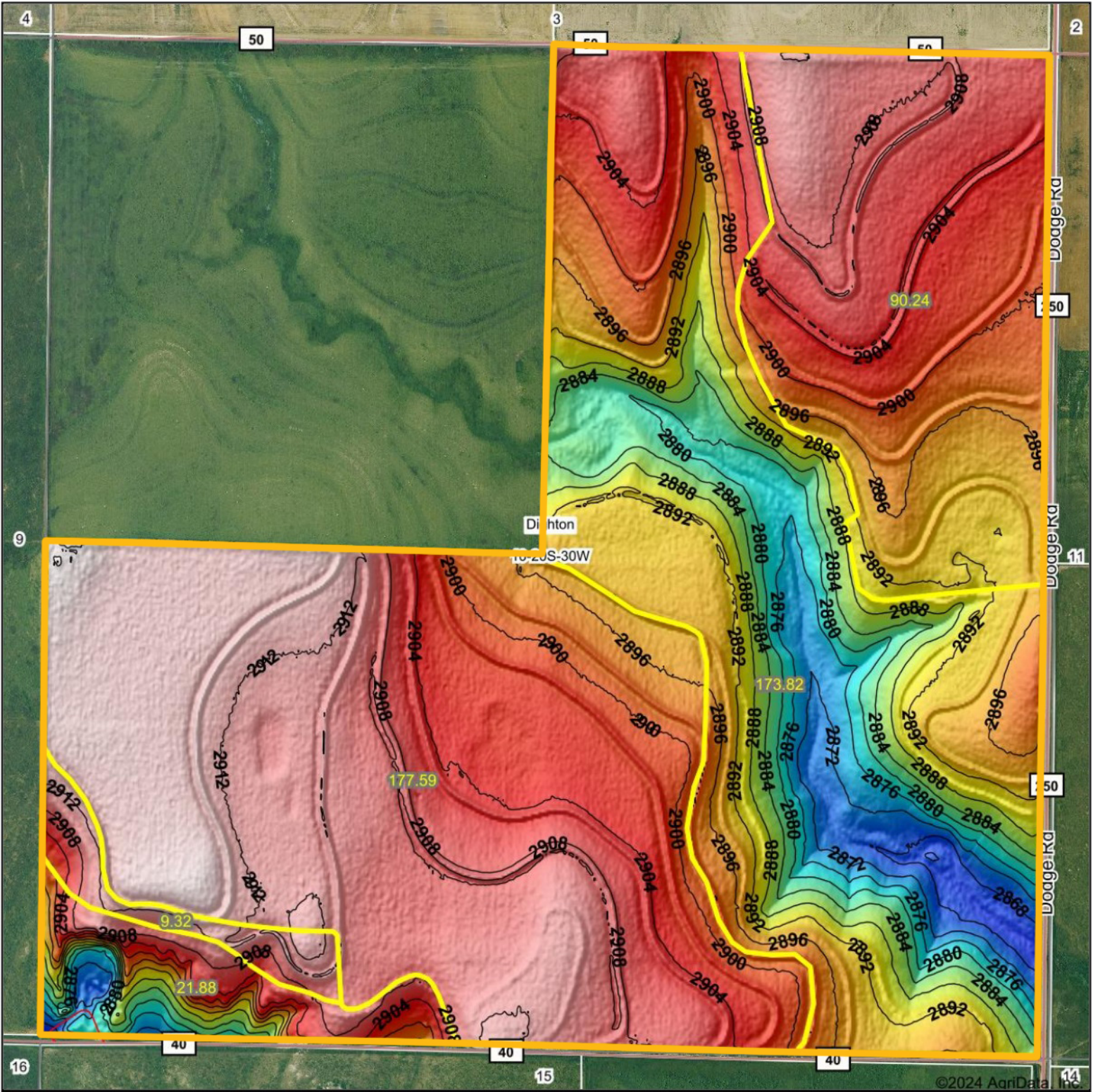


Topography Hillshade



<p>Low Elevation High</p>	<p>Source: USGS 3 meter dem Interval(ft): 4 Min: 2,862.9 Max: 2,916.0 Range: 53.1 Average: 2,898.8 Standard Deviation: 11.52 ft</p>	<p>0ft 817ft 1634ft</p> <p>10-20S-30W Lane County Kansas</p> <p>12/10/2024</p> <p>Boundary Center: 38° 19' 45.51, -100° 37' 15.93</p>
---------------------------	---	---

BigIron REALTY

Maps Provided By:

surety
 CUSTOMIZED ONLINE MAPPING

© AgriData, Inc. 2023 www.AgriDataInc.com
 Field borders provided by Farm Service Agency as of 5/21/2008.