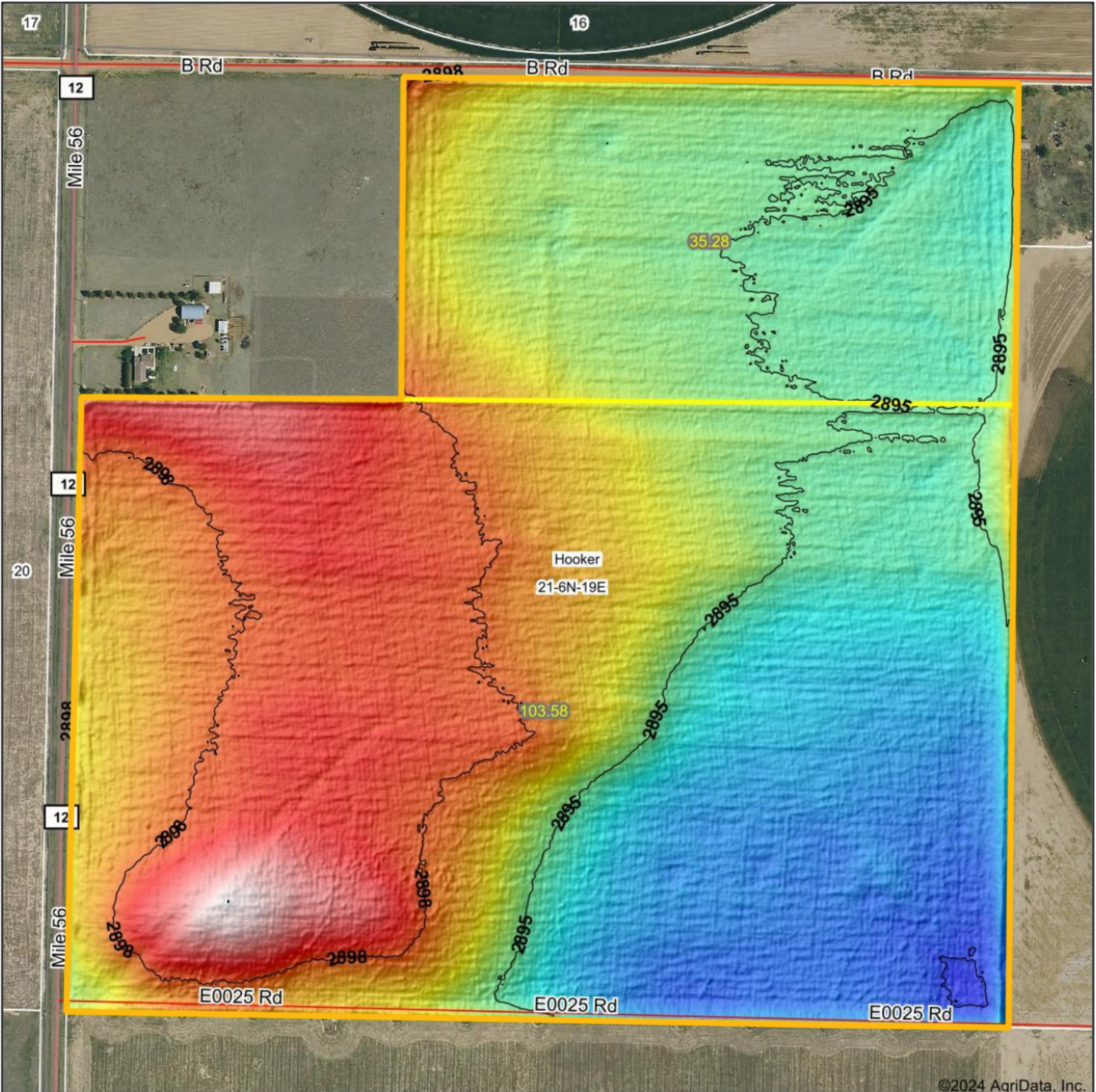
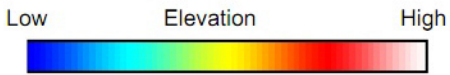


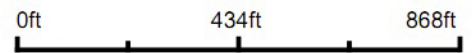
# Topography Hillshade



©2024 AgriData, Inc.



Source: USGS 1 meter dem  
 Interval(ft): 3  
 Min: 2,891.7  
 Max: 2,901.0  
 Range: 9.3  
 Average: 2,895.9  
 Standard Deviation: 2 ft



21-6N-19E  
 Texas County  
 Oklahoma

Boundary Center: 36° 58' 32.05, -101° 0' 47.35

**BigIron**  
 REALTY

Maps Provided By:



© AgriData, Inc. 2023 www.AgriDataInc.com

Field borders provided by Farm Service Agency as of 5/21/2008.