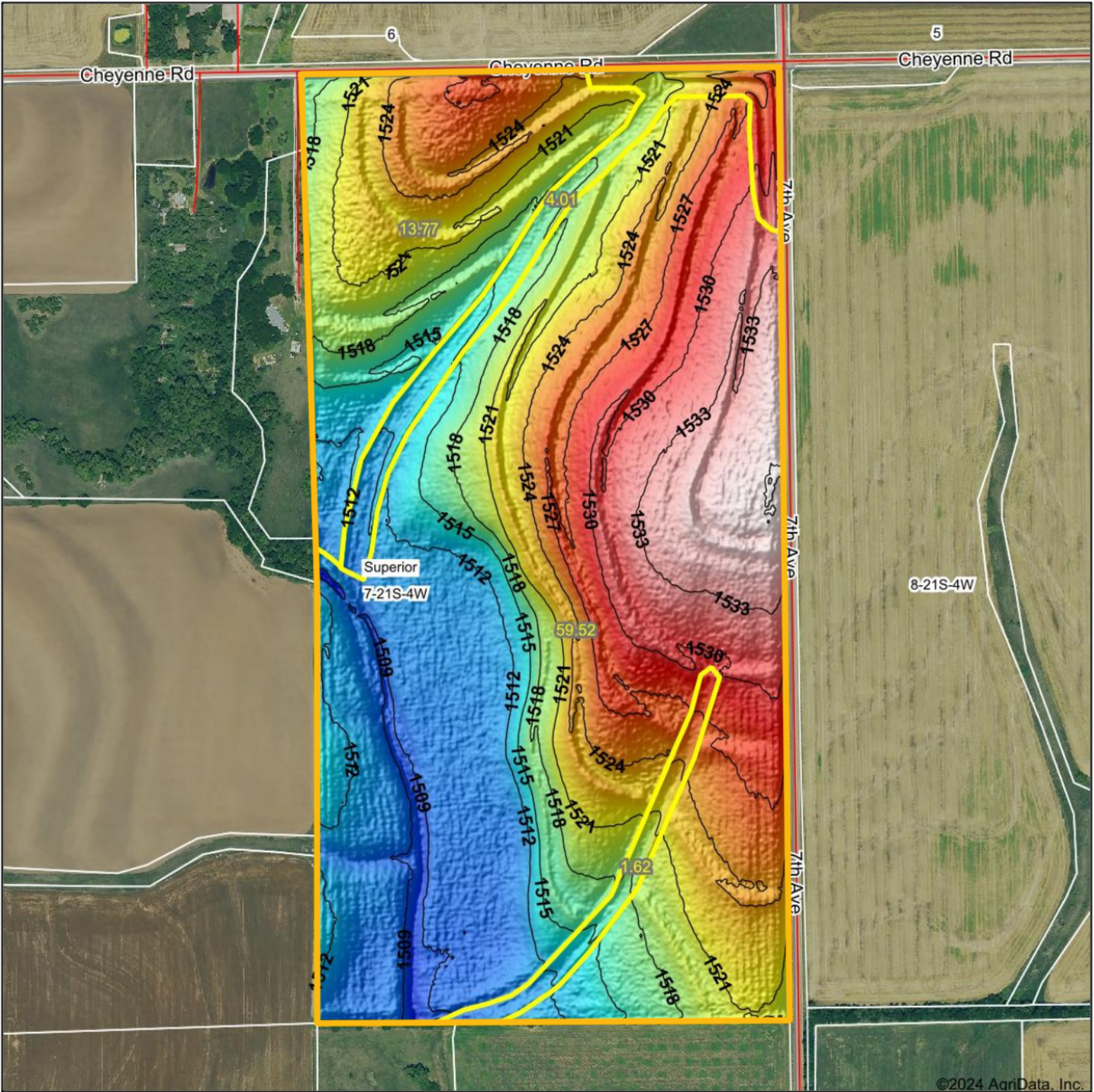

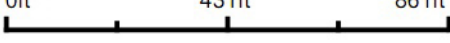



Topography Hillshade



<p>Low Elevation High</p> 	<p>Source: USGS 1 meter dem Interval(ft): 3 Min: 1,506.5 Max: 1,536.3 Range: 29.8 Average: 1,520.6 Standard Deviation: 7.74 ft</p>	<p>0ft 431ft 861ft</p>  <p>  6/21/2024 7-21S-4W McPherson County Kansas Boundary Center: 38° 14' 33.72, -97° 47' 48.08 </p>
--	--	---

BigIron
REALTY

Maps Provided By:



surety
CUSTOMIZED ONLINE MAPPING

© AgriData, Inc. 2023 www.AgridataInc.com
 Field borders provided by Farm Service Agency as of 5/21/2008.

©2024 AgriData, Inc.