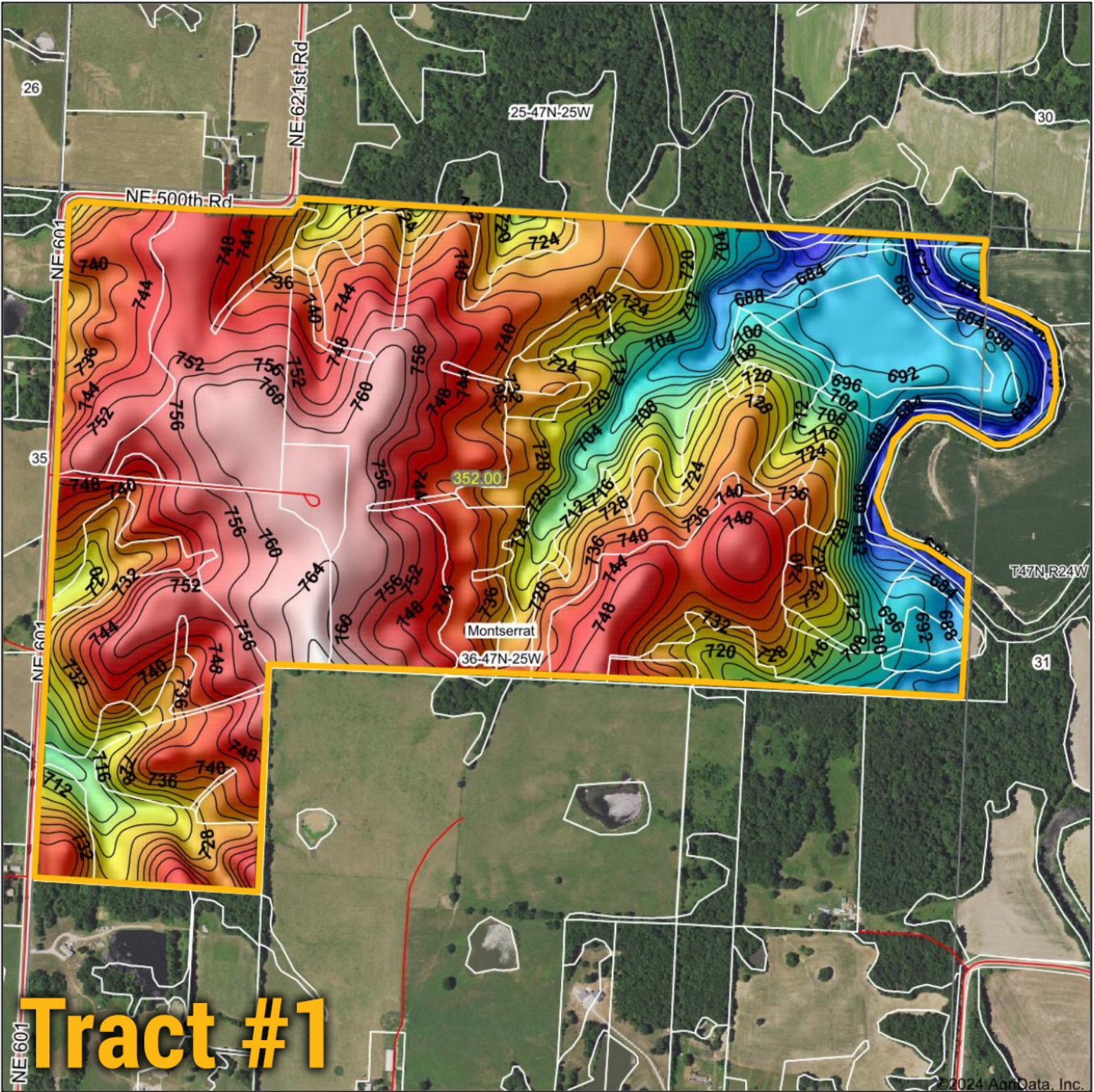


Topography Hillshade



Tract #1

| | | |
|---------------------------|---|---|
| <p>Low Elevation High</p> | <p>Source: USGS 10 meter dem Interval(ft): 4 Min: 671.0 Max: 770.4 Range: 99.4 Average: 730.4 Standard Deviation: 23.2 ft</p> | <p>0ft 890ft 1780ft</p> <p> 36-47N-25W Johnson County Missouri 4/19/2024 Boundary Center: 38° 49' 28.09, -93° 37' 5.49 </p> |
|---------------------------|---|---|

BigIron REALTY

Maps Provided By:

surety
 CUSTOMIZED ONLINE MAPPING

© AgriData, Inc. 2023 www.AgriDataInc.com

Field borders provided by Farm Service Agency as of 5/21/2008.