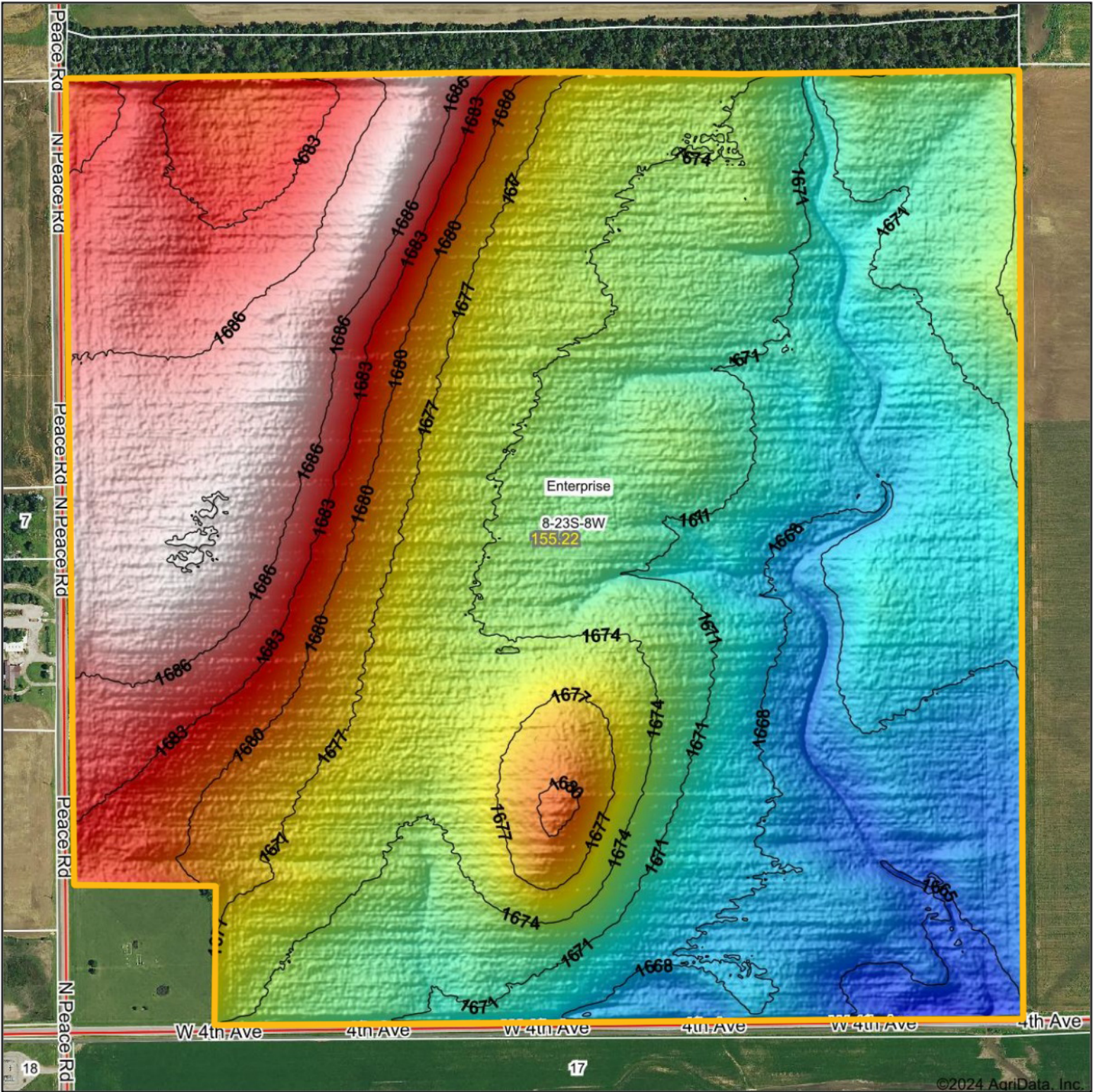


Topography Hillshade



<p>Low Elevation High</p>	<p>Source: USGS 1 meter dem Interval(ft): 3 Min: 1,663.0 Max: 1,689.2 Range: 26.2 Average: 1,675.5 Standard Deviation: 6.66 ft</p>	<p>0ft 430ft 861ft</p> <p> 8-23S-8W Reno County Kansas 12/9/2024 Boundary Center: 38° 3' 39.73, -98° 13' 46.78 </p>
---------------------------	--	---

BigIron REALTY
 Maps Provided By:

 CUSTOMIZED ONLINE MAPPING
 © AgriData, Inc. 2023 www.AgriDataInc.com
 Field borders provided by Farm Service Agency as of 5/21/2008.