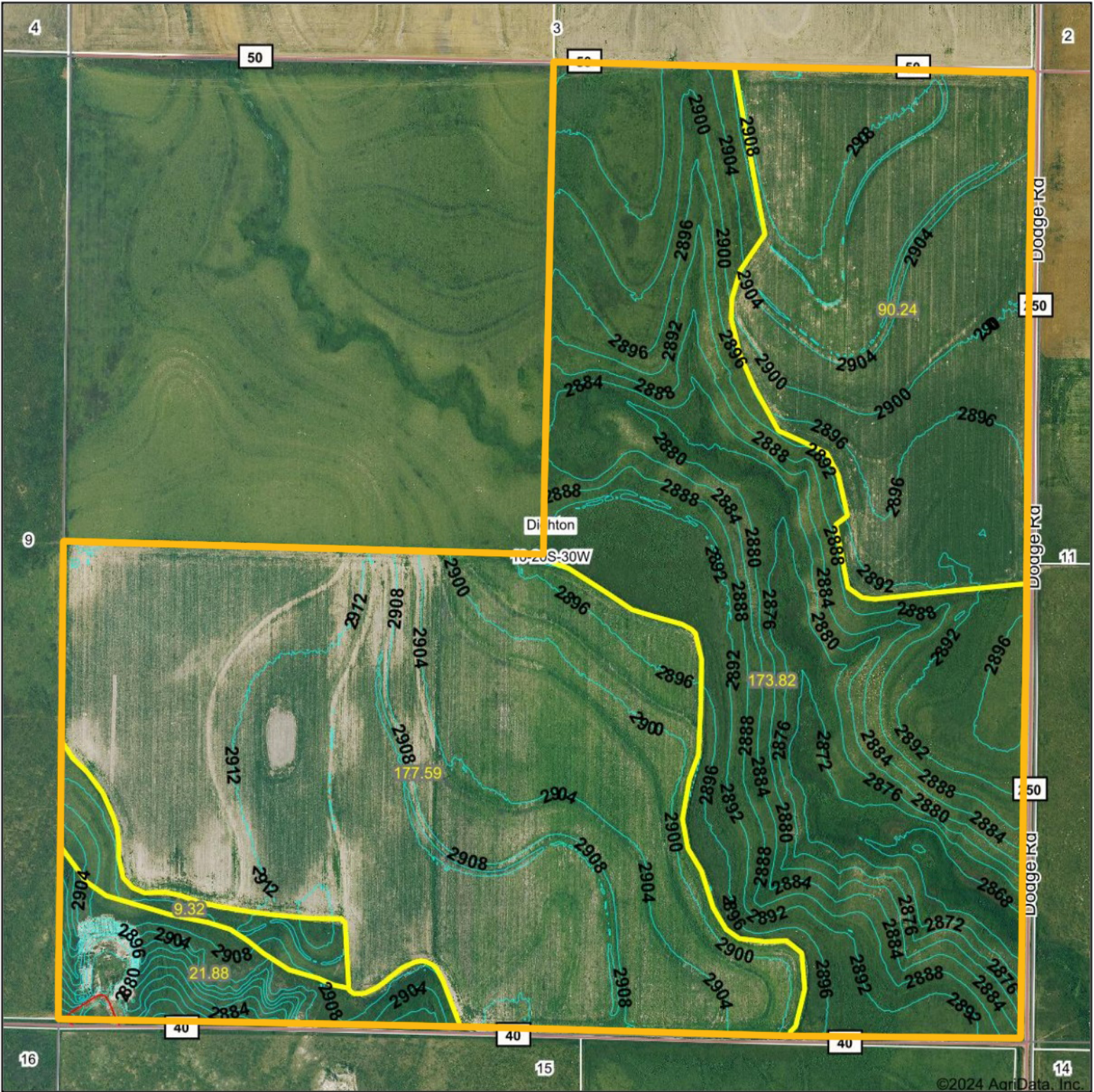


Topography Contours



©2024 AgriData, Inc.



© AgriData, Inc. 2023 www.AgriDataInc.com

Source: USGS 3 meter dem
 Interval(ft): 4.0
 Min: 2,862.9
 Max: 2,916.0
 Range: 53.1
 Average: 2,898.8
 Standard Deviation: 11.52 ft



12/10/2024

10-20S-30W
 Lane County
 Kansas

Boundary Center: 38° 19' 45.51, -100° 37' 15.93

Field borders provided by Farm Service Agency as of 5/21/2008.