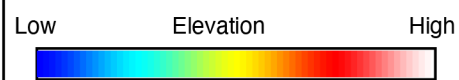
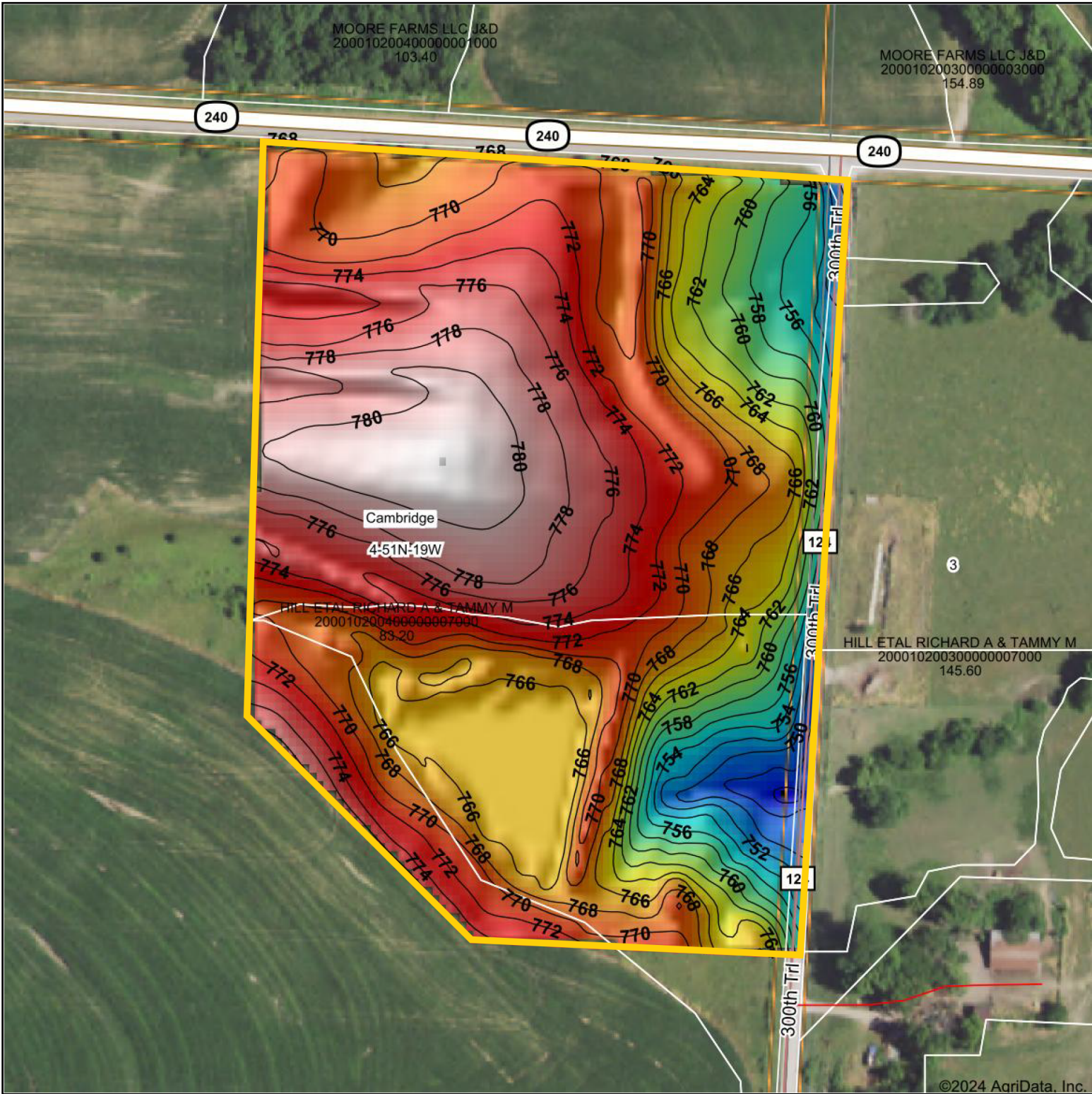
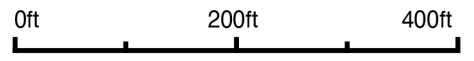


Topography Hillshade



Source: USGS 3 meter dem
 Interval(ft): 2
 Min: 745.1
 Max: 781.9
 Range: 36.8
 Average: 768.8
 Standard Deviation: 7.91 ft



BigIron
 REALTY

Maps Provided By:
surety
 CUSTOMIZED ONLINE MAPPING
 © AgriData, Inc. 2023 www.AgriDataInc.com

N
 W E
 S
 1/29/2024

4-51N-19W
Saline County
Missouri

Boundary Center: 39° 13' 38.94, -92° 58' 55.08

Field borders provided by Farm Service Agency as of 5/21/2008.