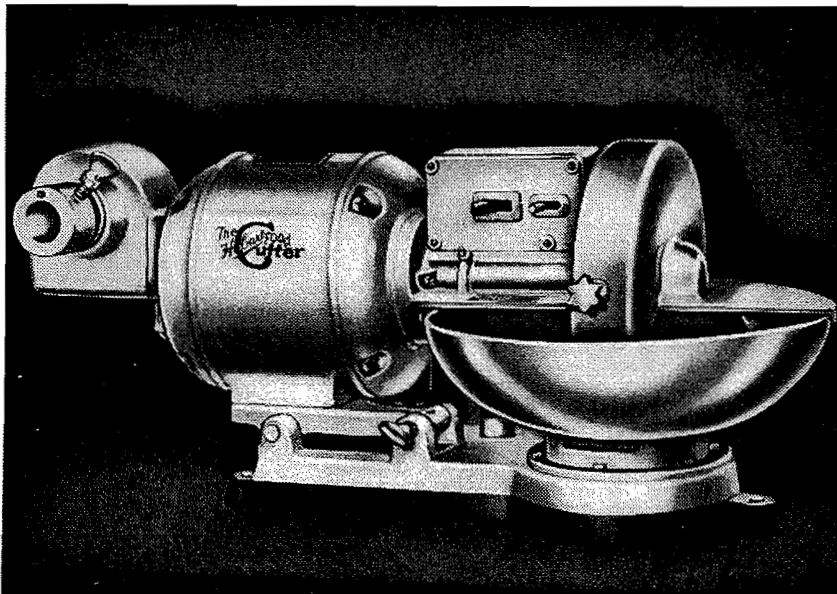


# INSTRUCTION MANUAL

. . . *with Catalog of Replacement Parts*



## HOBART

### MODEL T-215 FOOD CUTTER

#### WITH GEAR ATTACH.

Spec. #8117 — 1 Ph. & D.C.  
#8119 — 2 & 3 Ph.  
#8145 — 2 & 3 Ph.  
(Over 250 V.)

#### WITHOUT GEAR ATTACH.

Spec. #8118 — 1 Ph. & D.C.  
#8120 — 2 & 3 Ph.  
#8146 — 2 & 3 Ph.  
(Over 250 V.)

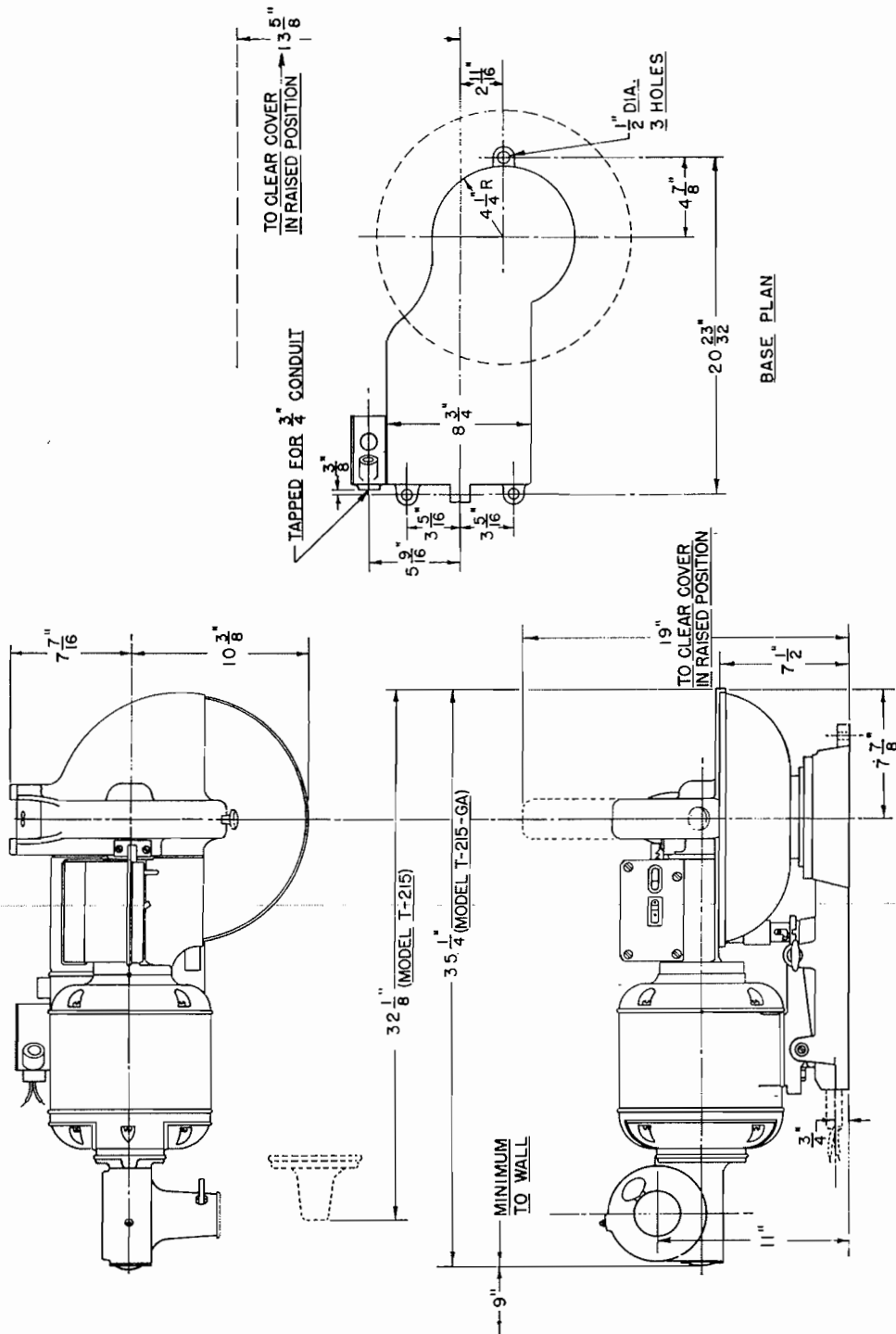
## THE HOBART MANUFACTURING COMPANY



*The World's Oldest and Largest Manufacturer of Computing Scales  
and Food Store, Kitchen, Bakery and Dishwashing Machines*

**TROY, OHIO, U.S.A.**

- THIS PAGE INTENTIONALLY LEFT BLANK -

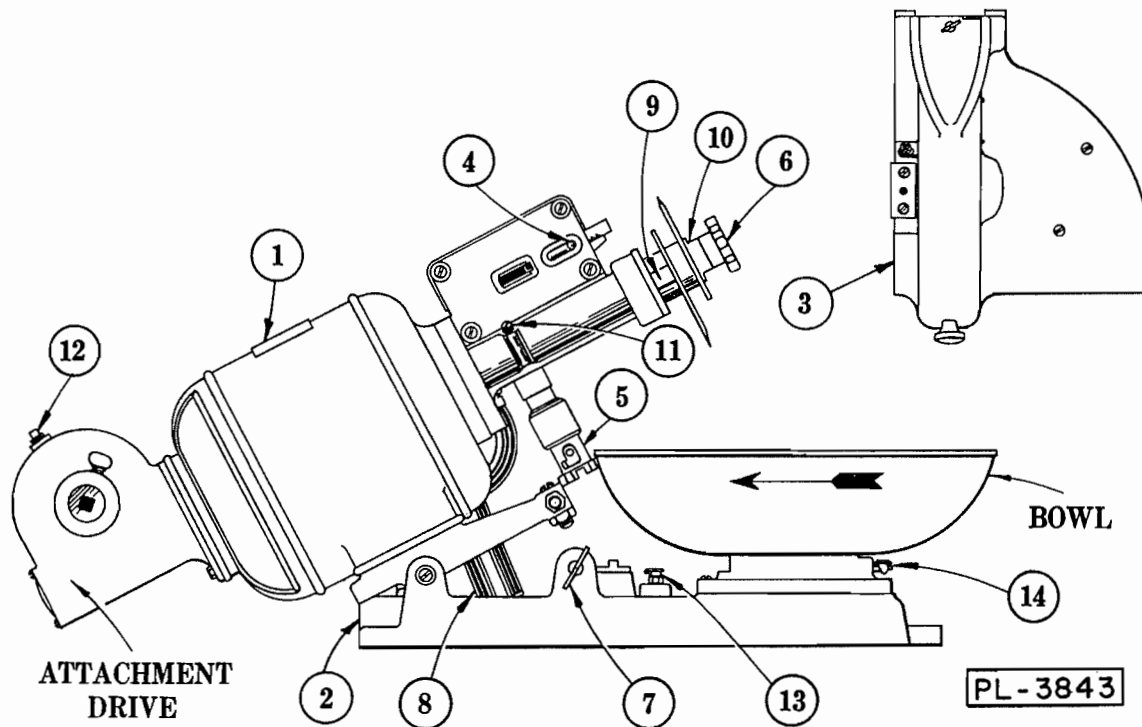


R-67578

PL-3846

INSTALLATION DIAGRAM

## Instructions for Operation and Care of Model T-215 Food Cutter



### INSTALLATION:

Before making electrical connections, CHECK THE SPECIFICATIONS ON THE NAME PLATE (1) TO MAKE SURE THEY AGREE WITH THOSE OF YOUR ELECTRICAL SERVICE. The junction box (2) is tapped for 3/4" conduit and should be used for making the electrical connections.

### SAFETY INTERLOCK:

The switch and the bowl cover are interlocked to prevent starting the motor with the knives unguarded. The bowl cover (3) is held down by a lock bolt (4) when the switch is turned on. After turning off the switch, the lock bolt may be slid back which then releases the bowl cover and locks the switch. CAUTION: KEEP HANDS FROM UNDER COVER AT ALL TIMES (as indicated on "Caution Plate").

### BOWL CLUTCH:

To stop the rotation of the bowl without stopping the motor, lift the clutch member (5). The clutch can be locked in the raised position by turning it slightly to allow the drive pin to enter the cross slot in the clutch. For additional safety remove the knife assembly (See Bowl & Knife Removal) before disengaging the clutch.

### CLEANING:

DO NOT ATTEMPT TO CLEAN OR REMOVE THE BOWL UNTIL AFTER REMOVAL OF THE KNIFE ASSEMBLY. The bowl cover can be removed for cleaning by swinging it up to a vertical position and then lifting it straight up out of its hinge. After removing the bowl cover, the knife comb and hinge pin cover will then lift off for cleaning. ALWAYS REMOVE THE KNIFE ASSEMBLY WHEN CLEANING. See paragraph on bowl and knife removal.

**BOWL & KNIFE REMOVAL:**

To remove the bowl first make sure that the switch is turned off and the knives have stopped turning. Next, swing up the bowl cover as far as it will go. The cover will stay in the up position without further attention. Carefully turn the knives by hand to a position that will permit their removal without dragging against the bowl. Remove the hand knob (6) and slide the knife assembly from the shaft. This method will not disturb the knife adjustment. Next, loosen the motor lock screw (7) and tilt the motor by hand. A dash pot (8) holds the machine in check so that the motor lifts slowly but allows it to be returned quickly and easily to the running position. After tilting the motor the bowl may be removed by giving it a fraction of a turn to the right. Make sure the grooves in the bowl and the bowl locking plate are clean before re-assembly. Occasionally lubricate these grooves with tasteless oil to facilitate bowl removal.

**ADJUSTMENT OF KNIVES:**

The knives are properly placed and adjusted when shipped from the factory. To make re-adjustments, swing the bowl cover up, then use the two wrenches furnished. Hold one wrench on the flats at (9) to keep the sleeve from turning while slightly loosening the nut (10) with the other wrench. After slightly loosening the knives gently tap them toward the bowl with a block of wood. The clearance between the knife (at the closest point) and the bowl should be .020" to .030". The knives should be directly opposite each other. Turn the knives slowly by hand to make sure they do not strike the bowl at any point. The leader knife is beveled on one side only and must be placed on the side next to the motor. The knives must be set to cut downward when viewed from the hand knob end.

**SHARPENING:**

Although the knives should be sharp they need not have a razor edge. An extremely thin edge

will dull quicker than the sturdy beveled sharpening on the knives as received from the factory. Use a combination carborundum stone to sharpen the knives. REMOVE the knife assembly as described in Bowl & Knife Removal paragraph. For ordinary honing, it is not necessary to take the knife unit apart. If a knife becomes nicked by accident and it is necessary to grind it deeply, the knives must then be re-adjusted and perhaps re-balanced. Because of the high speed operation, the two knives must be practically equal in weight, to maintain proper balance. Knives are paired and balanced at the factory and spare knives should be kept in pairs.

**LUBRICATION:**

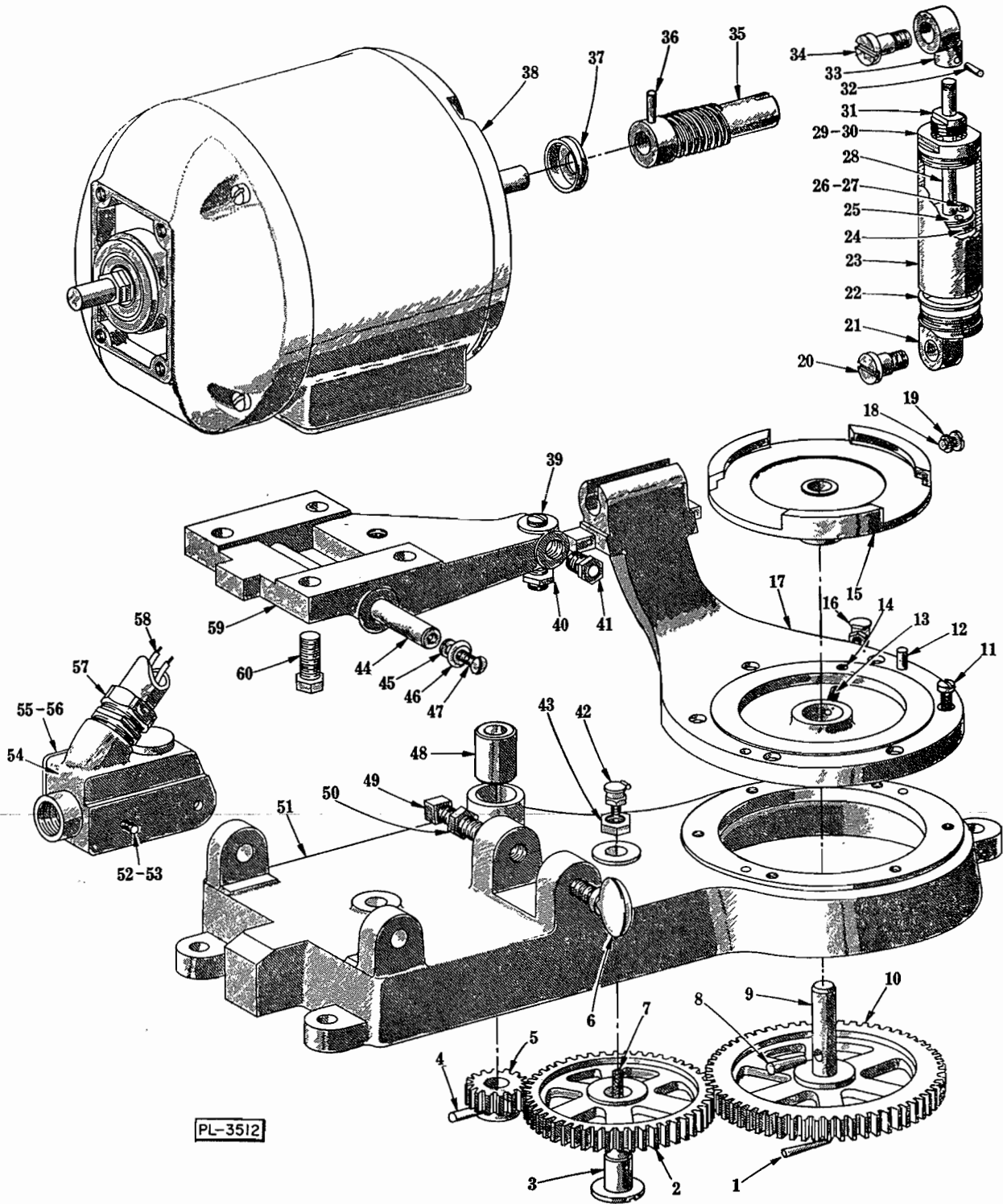
The motor has grease-packed ball bearings and will not need further attention. The bowl drive gear case is lubricated through the inspection plug (11). Lubricate the attachment drive gears through the vent plug (12). Lubricate the idler stud at (13) and the bowl drive at (14) with a few drops of oil daily. The gear train, underneath the base, that drives the bowl operates at a very slow speed and will require little attention; a graphite grease (such as "Gredag") is recommended for these gears. The dash pot (8) uses a special hydraulic oil. Have your Hobart serviceman check the lubricants on this machine at least once a year.

**MOTOR:**

If your motor has brushes they should be serviced twice a year. Multiphase motors should be connected so that bowl rotates in direction shown by arrow in illustration.

**SAFETY:**

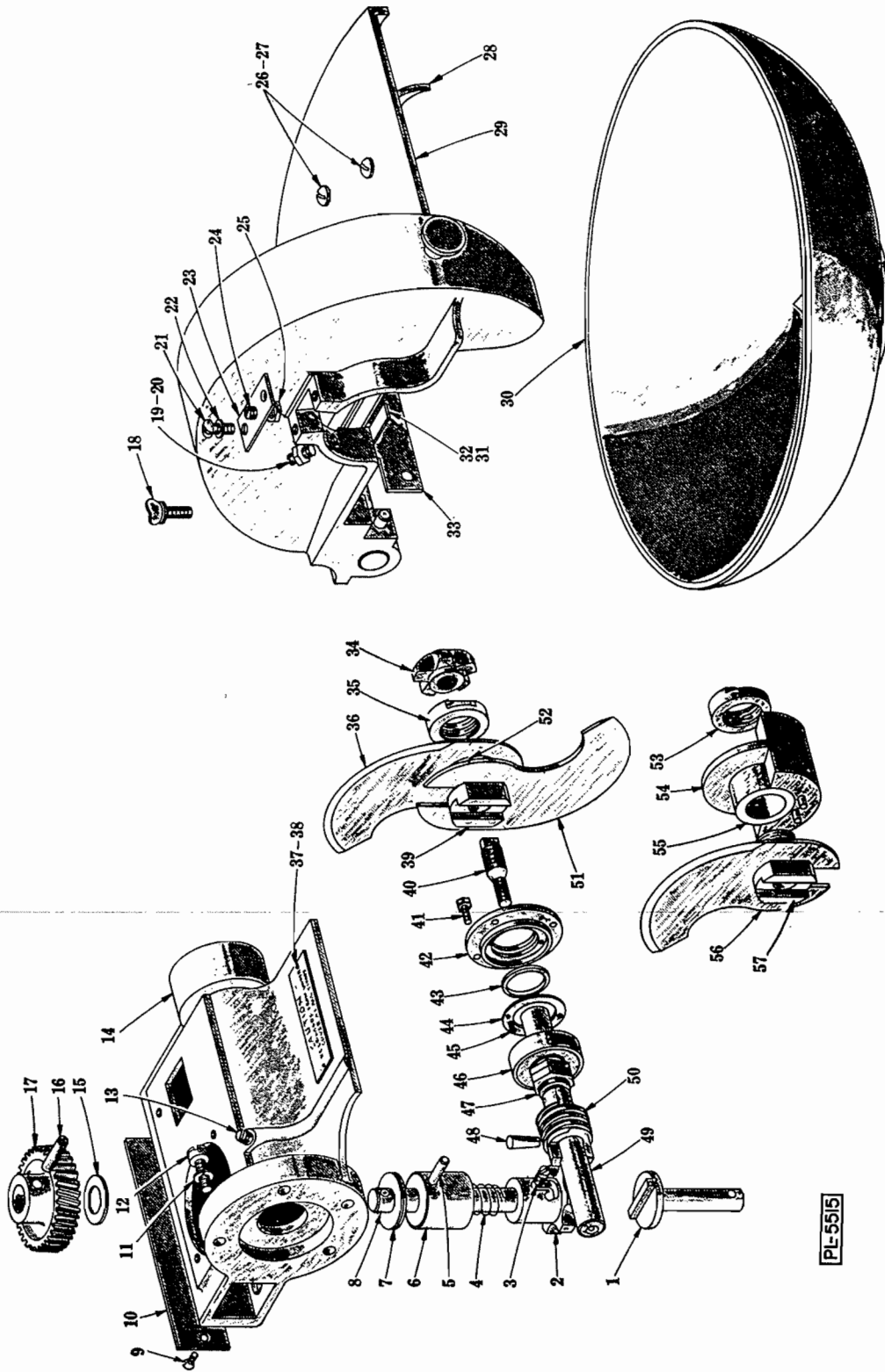
Stop the motor and wait until the knives stop turning before unloading the bowl. Keep your hands out of the bowl when the knives are turning. When washing the knives, use caution as with any other sharp tools.



MOTOR, BASE AND BOWL DRIVE UNIT

## MOTOR, BASE AND BOWL DRIVE UNIT

ILLUS. PL-3512	PART NO.	NAME OF PART	AMT.
1	PT-3-54	Taper Pin - #3 x 1-1/2" lg. -----	1
2	P-6610	Gear - Idler (52T) -----	1
3	V-6601	Stud - Idler Gear -----	1
4	PT-3-51	Taper Pin - #3 x 1-1/8" lg. -----	1
5	M-6604	Pinion - (15T) -----	1
6	M-4202-1	Thumb Screw -----	1
7	WF-2-6	Wicking - Fluid -----	1
8	PT-3-51	Taper Pin - #3 x 1-1/8" lg. -----	1
9	V-6279	Stud - Bowl Drive -----	1
10	P-6609	Gear - Bowl Drive (60T) -----	1
11	SC-38-4	Cap Screw - 1/4"-20 x 7/8" Fil. Hd. -----	6
12	P-11800-93	Dowel -----	2
13	M-65596	Felt - Cover Support Arm (Long) -----	1
14	M-65597	Felt - Cover Support Arm (Short) -----	1
15	P-6243	Plate - Bowl Locking -----	1
16	OG-3-46	Oiler - 1/8" Pipe Thd. -----	1
17	M-65699	Cover Support Arm Sub-Assy. (Incls. items #13, 14 & 16) -----	1
18	SC-8-68	Mach. Screw - 1/4"-20 x 1/2" Rd. Hd. -----	2
19	WL-3-36	Lock Washer - 1/4" x .107" x .047" -----	2
20	V-6587	Screw - Dash Pot Retaining (Lower) -----	1
21	M-6585	Connection - Dash Pot -----	1
22	GR-2-3	Gasket - Copper Asbestos -----	2
23	M-6586	Cylinder - Dash Pot -----	1
24	V-6581	Plunger - Dash Pot -----	1
25	V-6580	Disc - Dash Pot Check -----	1
26	SC-7-25	Mach. Screw - #6-32 x 1/2" Rd. Hd. -----	1
27	NS-9-6	Mach. Nut - #6-32 Hex -----	1
28	V-6579	Rod - Dash Pot Plunger -----	1
29	M-6584	Cover - Dash Pot -----	1
30	M-62148	Packing - Coil -----	1
31	V-6583	Nut - Dash Pot Packing -----	1
32	RP-3-11	Rollpin - 3/32" Dia. x 11/16" lg. -----	1
33	V-6582	Connection - Dash Pot Upper -----	1
34	V-7493	Screw - Dash Pot Retaining (Upper) -----	1
35	M-6626	Worm - Bowl Drive -----	1
36	M-71035	Taper Pin - #4 x 1-1/4" lg. -----	1
37	V-8067	Washer - Grease Deflecting -----	1
38		Motor (see separate Motor Parts Sheet) -----	1
39	SC-46-86	Set Screw - 1/2"-13 x 1-3/4" Oval Pt. -----	1
40	NS-17-27	Jam Nut - 1/2"-13 Hex Fin. -----	1
41	V-6597	Seat - Lock Screw -----	1
42	OG-3-21	Oiler 1/8" Pipe Thd. -----	1
43	NS-17-37	Jam Nut - 5/8"-11 Hex Fin. -----	1
44	M-21599	Shaft - Pivot -----	1
45	WL-3-36	Lock Washer - 1/4" x .107" x .047" -----	2
46	V-12347	Washer - Special -----	2
47	SC-15-65	Mach. Screw - 1/4"-20 x 5/8" Oval Hd. -----	2
48	V-13227	Bearing -----	1
49	SC-48-29	Set Screw - 1/2"-13 x 1-1/2" Sq. Hd. Flat Pt. -----	1
50	NS-17-27	Jam Nut - 1/2"-13 Hex Fin. -----	1
51	R-6595	Base - Silent Cutter -----	1
52	WL-3-37	Lock Washer - 1/4" x .109" x .062" -----	2
53	SC-8-69	Mach. Screw - 1/4"-20 x 5/8" Rd. Hd. -----	2
54	P-9393	Condulet -----	1
55	M-9394	Cover - Condulet -----	1
56	SC-27-19	Mach. Screw - #6-32 x 5/16" Rd. Hd. -----	4
57	M-62721	Conduit - Flexible Wiring -----	1
58	R-67000-15	Lead - Switch to Junction Box -----	2
59	R-6598	Support - Motor -----	1
60	SC-37-1	Fin. Bolt - 1/2"-13 x 1-1/2" Hex Hd. -----	4
	P-6578	Dash Pot Assy. (Incls. items #21 to 33 incl.) -----	1



PL-5515

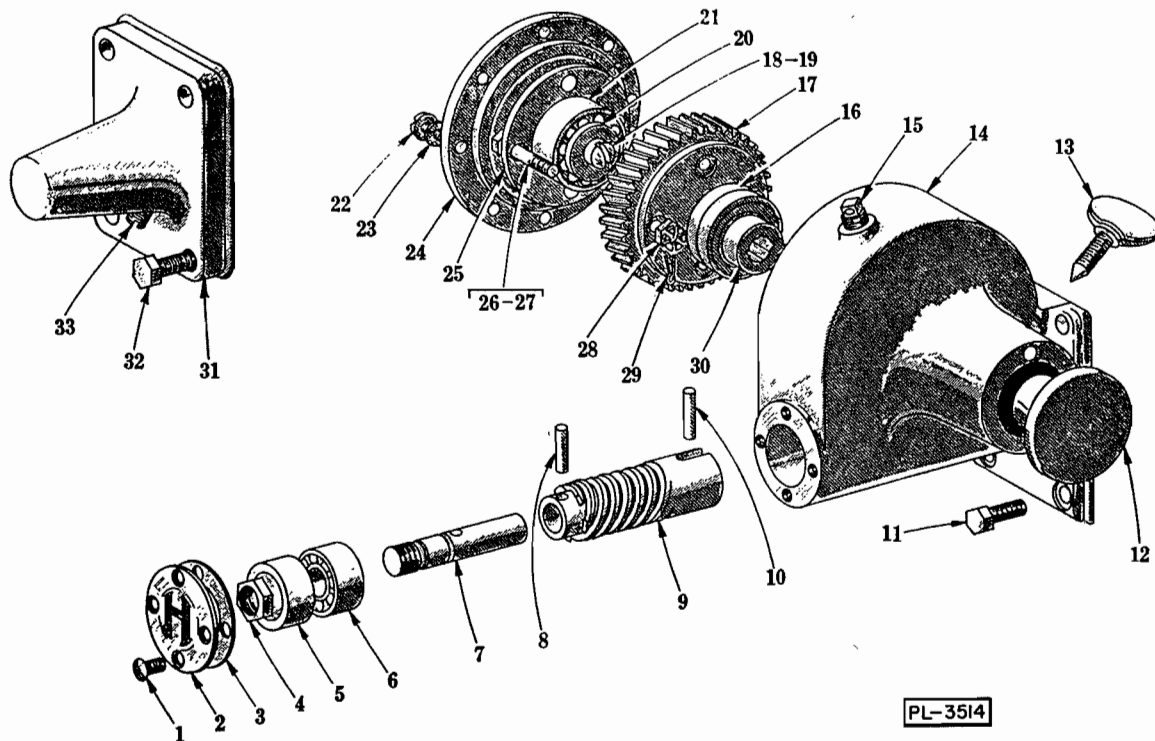
GEAR CASE AND KNIFE UNIT



## GEAR CASE AND KNIFE UNIT

ILLUS. PL-5515	PART NO.	NAME OF PART	AMT.
1	M-7146	Section - Lower Clutch -----	1
2	M-7147	Section - Upper Clutch -----	1
3	V-5499	Stud - Stop -----	1
4	V-6619	Spring - Clutch Shaft -----	1
5	P-11800-75	Dowel -----	1
6	M-7145	Collar - Spring Cover -----	1
7	WS-9-22	Washer -----	As Req'd.
8	M-7658	Shaft - Bowl Drive -----	1
9	SC-13-59	Mach. Screw #10-24 x 3/8" Flat Hd. -----	2
10	M-7062-2	Plate - Gear Case Back -----	1
11	WL-3-36	Lock Washer - 1/4" x .107" x .047" -----	4
12	SC-38-9	Cap Screw - 1/4"-20 x 1" Fil. Hd. -----	4
13	V-22660	Plug - Inspection -----	1
14	M-66713	Gear Case & Caution Plate Sub-Assy. (Incls. items #37 & 38) -----	1
15	WS-9-23	Washer -----	1
16	P-11800-96	Dowel -----	1
17	M-6606	Worm Wheel - Bowl -----	1
18	P-70641-2	Thumb Screw -----	1
19	SC-46-95	Set Screw - 1/4"-20 x 3/4" Oval Pt. -----	1
20	NS-17-2	Jam Nut - 1/4"-20 Hex Fin. -----	1
21	SC-8-82	Mach. Screw - 1/4"-20 x 1/2" Rd. Hd. -----	2
22	WL-6-16	Lock Washer - 1/4" x .107" x .047" -----	2
23	M-71052	Trip - Switch Trigger -----	1
24	SC-46-39	Set Screw - 1/4"-20 x 1/2" Oval Pt. -----	1
25	NS-17-2	Jam Nut - 1/4"-20 Hex Fin. -----	1
26	SC-21-39	Mach. Screw - 1/4"-20 x 5/8" Rd. Hd. -----	2
27	WL-6-16	Lock Washer - 1/4" x .107" x .047" -----	2
28	P-71060	Scraper - Bowl -----	1
29	S-71914	Bowl Cover Sub-Assy. -----	1
30	P-6241-1	Bowl -----	1
31	M-71008	Comb Assy. -----	1
32	M-71092	Comb Assy. (Single Knife) -----	1
33	M-71010	Cover - Hinge Pin -----	1
34	M-74827	Knob - Knife Retaining -----	1
35	V-6261	Collar - Locking -----	1
36	M-17907	Knife - Rotary (Follower) -----	1
37	M-66281	Plate - Caution -----	1
38	RS-12-8	Rivet - 1/8" x 3/8" Rd. Hd. -----	2
39	P-7157	Bushing - Knife Retaining -----	1
40	M-17933	Insert - Knife Shaft -----	1
41	SC-67-5	Mach. Screw - #8-32 x 1/2" Hex Hd. -----	4
42	M-71050	Plate - Bearing Retaining -----	1
43	M-60506	Washer - Felt Grease Retaining -----	1
44	V-6630	Retainer - Felt -----	1
45	SC-13-2	Mach. Screw - #4-40 x 1/4" Flat Hd. -----	2
46	BB-7-35	Ball Bearing - N.D. #Z 99505 -----	1
47	V-6627	Nut - Hex -----	2
48	M-71035	Taper Pin - #4 x 1-1/4" lg. -----	1
49	P-70787	Knife Shaft & Insert Assy. (Incls. item #40) -----	1
50	M-6634	Conveyor - Grease -----	1
51	M-17906	Knife - Rotary (Leader) -----	1
52	V-6262	Collar - Bushing -----	1
	S-70971	Bowl Cover Assy. (Incls. items #18, 19, 20, 21, 22, 23, 24, 25, 26, 27, 28, 29, 31 & 33) -----	1
<b>SINGLE KNIFE UNIT</b>			
53	V-8343	Collar - Locking -----	1
54	P-61207	Balance - Knife -----	1
55	V-6262	Collar - Bushing -----	1
56	M-17907	Knife - Rotary (Follower) -----	1
57	P-7157	Bushing - Knife Retaining -----	1
	P-71978	Single Knife & Knife Balance Assy. (Incls. items #53, 54, 55, 56 & 57) -----	1

NOTE: See item #32 for Comb Assy.

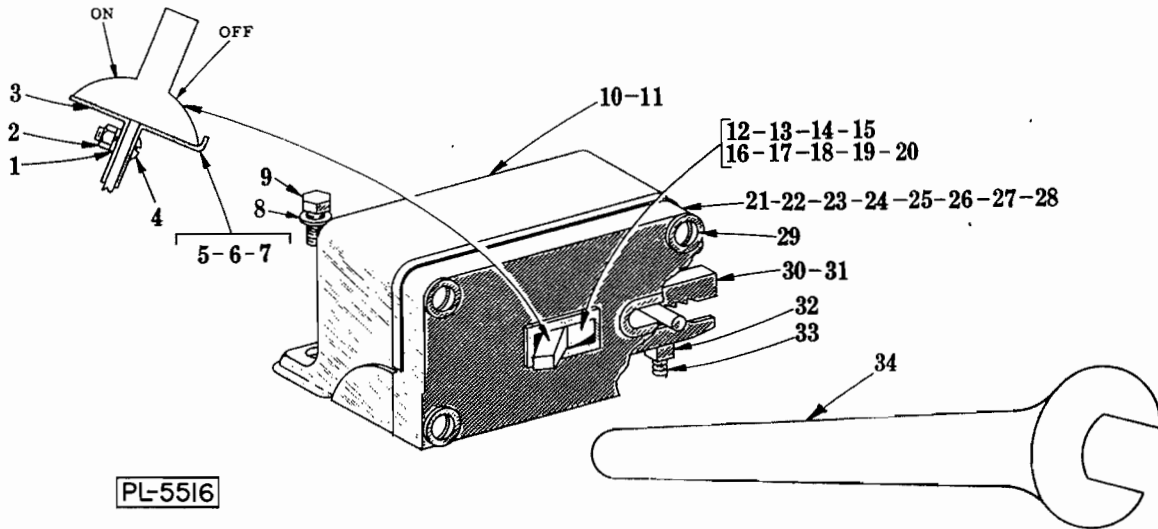


ATTACHMENT GEAR CASE UNIT

## ATTACHMENT GEAR CASE UNIT

ILLUS. PL-3514	PART NO.	NAME OF PART	AMT.
1	SC-15-20	Mach. Screw - #8-32 x 3/8" Oval Hd. -----	4
2	P-12062	Cap - Hub Cover -----	1
3	V-24464	Gasket - Cover Cap -----	1
4	V-6571	Lock Nut - Shaft Extension -----	2
5	V-6545	Collar - Thrust -----	1
6	BB-9-1	Ball Bearing - N.D. #5302 -----	1
7	M-6540	Extension - Shaft -----	1
8	P-11800-65	Dowel -----	1
9	M-63202	Extension Shaft & Worm Sub-Assy. (Incls. items 7, 8 & 9) -----	1
10	P-11800-96	Dowel -----	1
11	SC-36-6	Fin. Bolt - 1/4"-20 x 1" Hex Hd. -----	4
12	P-24841	Cover - Blind End -----	1
13	M-4202-2	Thumb Screw -----	1
14	R-22271	Case - Gear -----	1
15	V-4133	Plug - 1/8" Ventilated Pipe -----	1
16	M-23626	Seal - Grease -----	2
17	M-6543	Gear - Spiral (35T) -----	1
18	SC-12-6	Mach. Screw - 5/16"-18 x 2-1/4" Fil. Hd. -----	1
19	NS-17-6	Jam Nut - 5/16"-18 Hex Fin. -----	1
20	WS-5-8	Washer -----	1
21	BB-9-4	Ball Bearing - N.D. #5205 -----	1
22	SC-8-70	Mach. Screw - 1/4"-20 x 3/4" Rd. Hd. -----	8
23	WL-3-36	Lock Washer - 1/4" x .107" x .047" -----	8
24	P-21893	Cover - Gear Case -----	1
25	M-6542	Disc - Bearing Retaining -----	1
26	V-6945	Bolt - Special -----	4
27	WL-3-43	Lock Washer - 5/16" x .117" x .056" -----	4
28	NS-20-6	Castle Nut - 5/16"-24 -----	4
29	PC-3-17	Cotter Pin - 1/16" x 1/2" -----	4
30	M-60680	Drive Plate & Washer Sub-Assy. -----	1
* 31	P-6693	Cover - Motor Shaft (Attachment End) -----	1
* 32	SC-41-6	Fin. Bolt - 1/4"-20 x 1-1/4" Hex Hd. -----	4
* 33	V-22660	Plug - Inspection -----	1
	M-63292	Attachment Drive Sub-Assy. (Incls. items #1, 2, 3, 4, 5, 6, 7, 8, 9, 11, 12, 13, 14, 15, 16, 17, 18, 19, 20, 21, 22, 23, 24, 25, 26, 27, 28, 29 & 30)-----	1

\* For Machines Without Gear Attachment Only.



PL-5516

SWITCH AND MISCELLANEOUS

ILLUS. NO.	PART NO.	NAME OF PART	AMT.
1	WL-3-7	Lock Washer - #6 x .040" x .025" -----	1
2	NS-9-6	Mach. Nut - #6-32 Hex -----	1
3	V-7198	Reinforcement - Switch Handle -----	1
4	SC-7-23	Mach. Screw - #6-32 x 3/8" Rd. Hd. -----	1
5	V-7064	Reinforcement - Switch Handle -----	1
6	M-7074	Reinforcement - Switch Handle (3 Ph.) -----	1
7	SC-60-56	Mach. Screw - #10-32 x 5/16" Rd. Hd. (3 Ph.) -----	1
8	WS-4-39	Washer -----	3
9	SC-37-97	Fin Bolt - 5/16"-18 x 3/4" Hex Hd. -----	3
10	R-7060-3	Back - Switch Box -----	1
11	R-7073-3	Back - Switch Box (3 Ph.) -----	1
12	M-11397	Switch - (above 220 V.) (1 Ph. & D.C.) -----	1
13	M-62547	Switch with Handle Reinforcement (1 Ph., Below 220 V.) -----	1
14	M-62548	Switch with Handle Reinforcement (3 Ph.) -----	1
*15	R-24940-6	Switch (3 Ph., Above 250 V.) -----	1
*16	M-68420	Insulator - Switch Box -----	1
17	SC-7-80	Mach. Screw - #10-24 x 5/8" Rd. Hd. -----	2
18	WL-3-22	Lock Washer - #10 x .055" x .040" -----	2
19	SC-7-82	Mach. Screw - #10-24 x 3/4" Rd. Hd. (3 Ph.) -----	4
20	WL-3-22	Lock Washer - #10 x .055" x .040" (3 Ph.) -----	4
21	M-62297-2	Switch Box Front, Trigger & Dowel Sub-Assy. (1 Ph. & DC) -----	1
22	M-62306-2	Switch Box Front, Trigger & Dowel Sub-Assy. (3 Ph.) -----	1
*23	P-68357	Switch Box Front, Trigger & Dowel Sub-Assy. (2 & 3 Ph., Over 250 V.) --	1
*24	SC-7-41	Mach. Screw - #8-32 x 3/8" Rd. Hd. -----	2
*25	NS-9-9	Mach. Nut - #8-32 Hex -----	2
*26	WL-3-15	Lock Washer - #8 x .047" x .031" -----	2
*27	M-68355	Plug -----	1
*28	SC-27-41	Mach. Screw - #10-24 x 3/8" Rd. Hd. -----	3
29	SC-16-21	Mach. Screw - 1/4"-20 x 1-1/4" Oval Hd. -----	4
30	M-62296	Lock Bolt & Bolt Knob Sub-Assy. -----	1
*31	M-71919	Lock Bolt & Bolt Knob Sub-Assy. (2 & 3 Ph., Over 250 V.) -----	1
32	V-7068	Plunger - Switch Spring -----	1
33	V-7813	Spring - Pressure -----	1
34	M-24110	Wrench - Single Head -----	2

\* For 3 Phase Machines over 250 Volts ONLY.