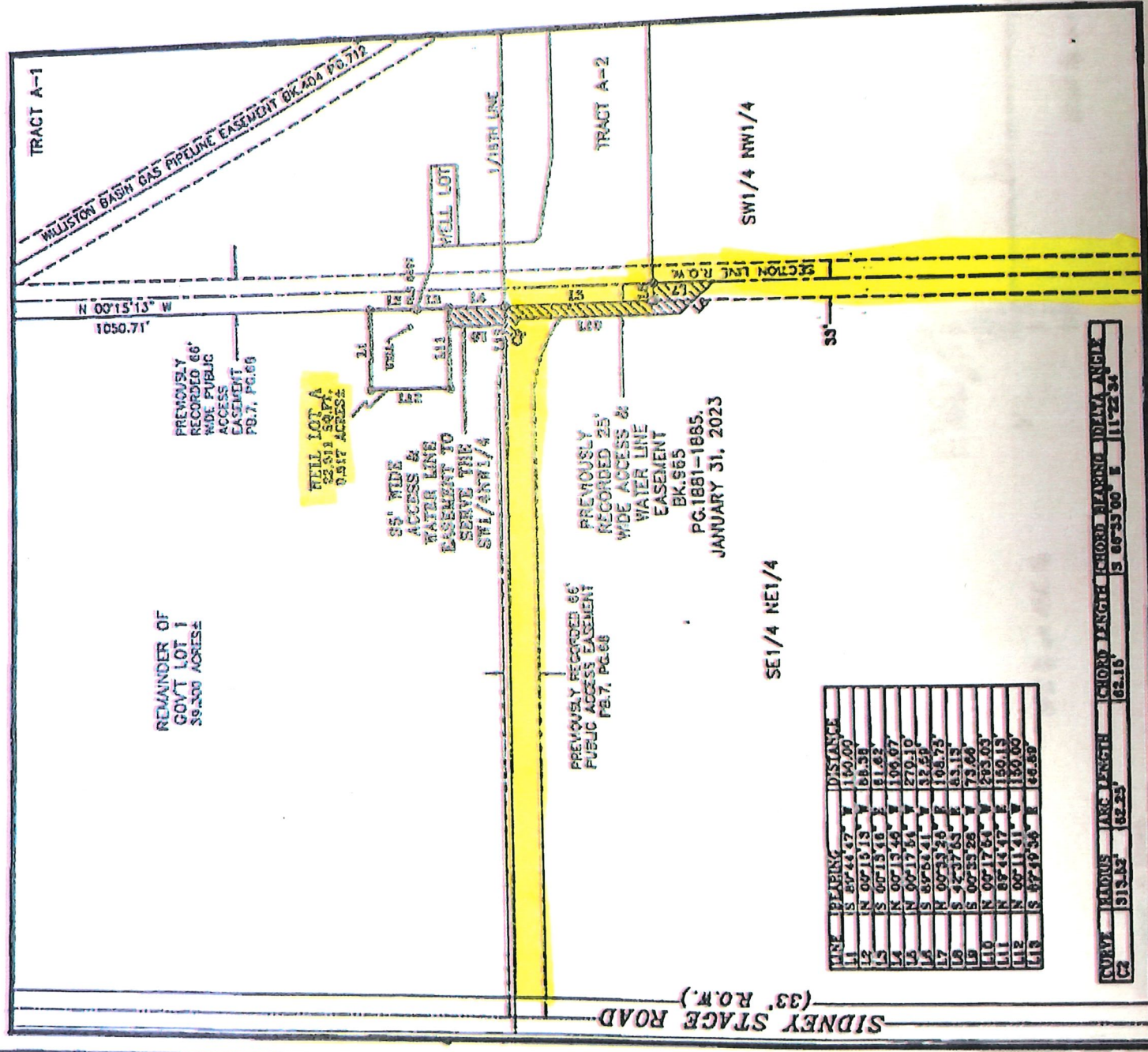


All Located in Gov't Lot 1 of Section 4, Township 3 North, Range 6 East, Black Hills Meridian, Meade County, South Dakota.



LINE	BEARING	ARC LENGTH	DISTANCE
L1	S 87°44'47" W	180.00'	
L2	N 00°15'13" W	68.31'	
L3	S 00°13'48" E	81.63'	
L4	N 00°13'48" W	100.07'	
L5	N 00°17'54" W	270.10'	
L6	S 87°44'41" W	32.55'	
L7	R 00°33'28" E	108.73'	
L8	S 92°37'63" E	83.13'	
L9	S 00°33'28" W	73.66'	
L10	N 00°17'54" W	283.03'	
L11	N 87°45'47" E	150.13'	
L12	N 00°11'41" W	150.00'	
L13	S 87°19'34" E	168.80'	

CURVE	RADIUS	ARC LENGTH	CHORD LENGTH	CHORD BEARING	DELTA ANGLE
C2	313.82'	182.23'	82.16'	S 66°33'00" E	111°22'34"



SCALE: 1" = 200 FEET
MARCH 2023

LEGEND

- Found or Set 5/8" Rebar with Cap Marked "Vadmetz RLS 7718".
- Found 5/8" Rebar with Cap Marked "Mecor RLS 1019". Unless Otherwise Noted