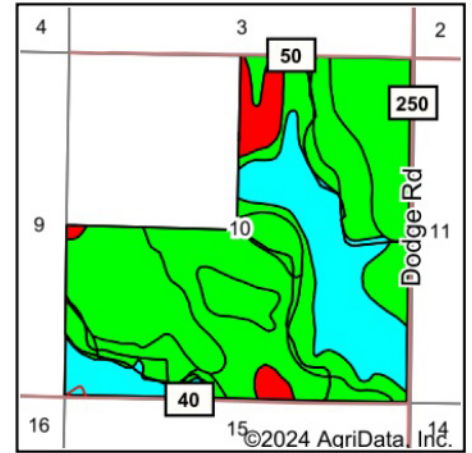


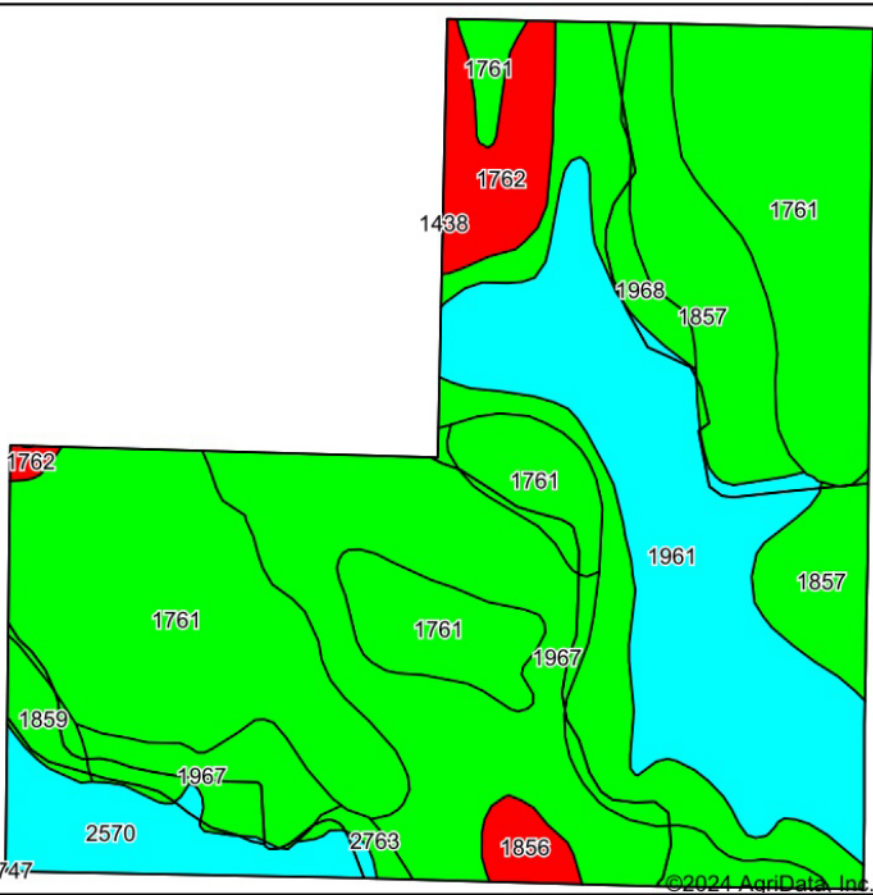
# Soils Map



State: **Kansas**  
 County: **Lane**  
 Location: **10-20S-30W**  
 Township: **Dighton**  
 Acres: **472.85**  
 Date: **12/10/2024**

**BigIron**  
 REALTY

Maps Provided By:



Soils data provided by USDA and NRCS.

Area Symbol: KS101, Soil Area Version: 22

Code	Soil Description	Acres	Percent of field	Non-Irr Class Legend	Non-Irr Class *c	Irr Class *c	Corn Irrigated Bu	Winter wheat Bu	Winter wheat Irrigated Bu	*n NCCPI Soybeans
1761	Richfield silt loam, 0 to 1 percent slopes	155.19	33.0%		IIIc	I	167	26	47	64
1967	Buffalo Park-Ulysses silt loams, 1 to 3 percent slopes, eroded	90.92	19.2%		IVe	Ile				53
1961	Buffalo Park-Ulysses silt loams, 6 to 15 percent slopes	85.02	18.0%		VIe					59
1968	Buffalo Park-Ulysses silt loams, 3 to 6 percent slopes, eroded	44.65	9.4%		IVe	IVe				49
1857	Ulysses silt loam, 1 to 3 percent slopes	43.99	9.3%		IIIe	Ile		20	45	64
2570	Canlon-Campus complex, 1 to 40 percent slopes	21.46	4.5%		VIe	VIIs				32
1762	Richfield silt loam, 1 to 3 percent slopes	18.56	3.9%		Ile	Ile	122	28	41	55
1856	Ulysses silt loam, 0 to 1 percent slopes	5.38	1.1%		IIc	Iw		22		63
1859	Ulysses silt loam, 3 to 6 percent slopes	5.36	1.1%		IIIe	IIIe		17		50
2763	Penden-Kim clay loams, 3 to 6 percent slopes, eroded	2.32	0.5%		IVe	IIIe				59
<b>Weighted Average</b>					<b>3.92</b>	<b>*-</b>	<b>59.6</b>	<b>11.9</b>	<b>21.2</b>	<b>*n 57.6</b>