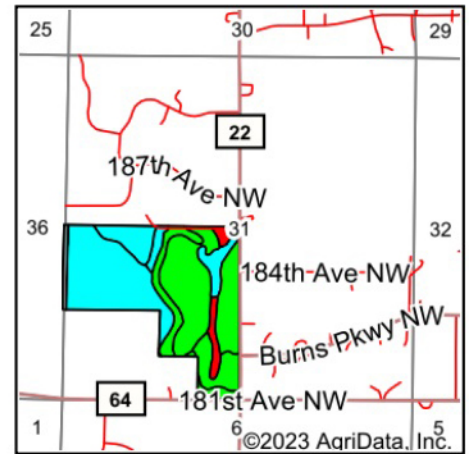
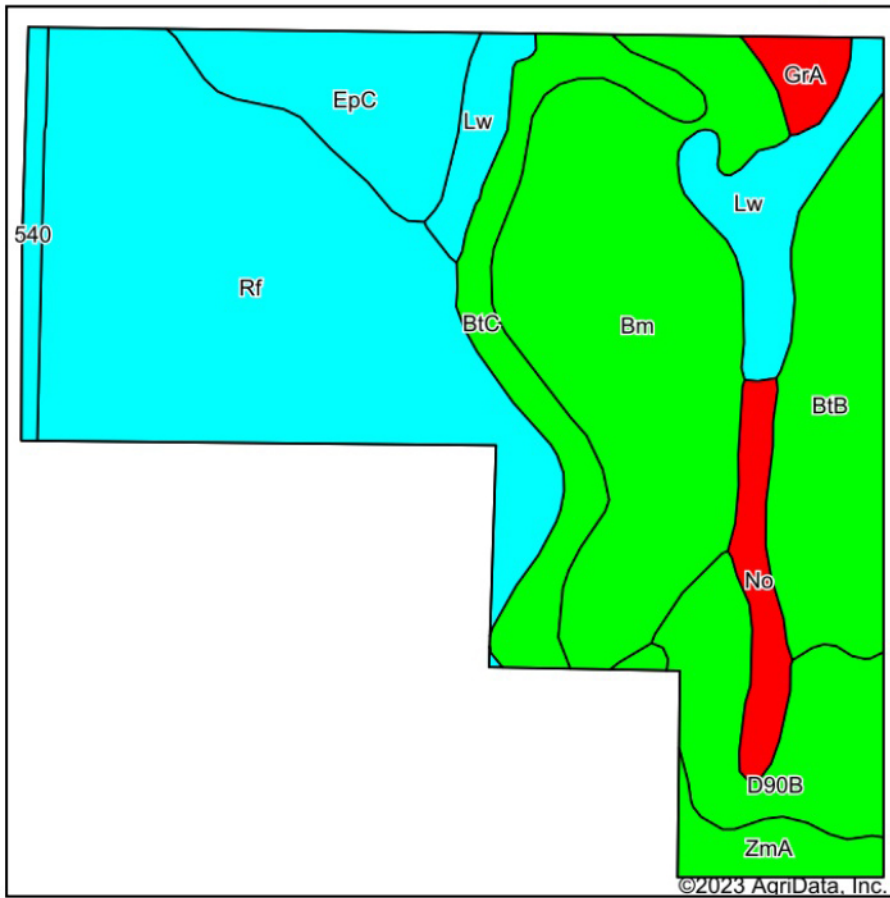


Soils Map



State: **Minnesota**
 County: **Anoka**
 Location: **31-33N-25W**
 Township: **Burns**
 Acres: **110**
 Date: **7/12/2023**

BigIron
 REALTY

Maps Provided By:



Soils data provided by USDA and NRCS.

©2023 AgriData, Inc.

Code	Soil Description	Acres	Percent of field	Non-Irr Class Legend	Non-Irr Class *c	Irr Class *c	Productivity Index	*n NCCPI Soybeans
Rf	Rifle mucky peat	34.63	31.5%			Vlw	15	34
Bm	Blomford loamy fine sand	24.37	22.2%			IIIw	57	44
BtB	Braham loamy fine sand, 2 to 6 percent slopes	11.53	10.5%			IIIIs	60	44
D90B	Nymore loamy sand, 1 to 6 percent slopes	8.39	7.6%			IVs	34	22
BtC	Braham loamy fine sand, 6 to 18 percent slopes	7.35	6.7%			IVe	52	41
Lw	Loamy wet land	7.35	6.7%			Vlw	15	59
EpC	Emmert complex, 4 to 12 percent slopes	7.28	6.6%			VIIs	36	21
No	Nowen sandy loam	3.12	2.8%			IIw	86	67
ZmA	Zimmerman fine sand, 0 to 2 percent slopes	2.74	2.5%			IVs	39	18
540	Seelyeville muck, 0 to 1 percent slopes	1.77	1.6%			Vlw	15	35
GrA	Growton fine sandy loam, 1 to 4 percent slopes	1.47	1.3%			IIe	80	51
Weighted Average					4.52	*-	37.8	*n 38.4