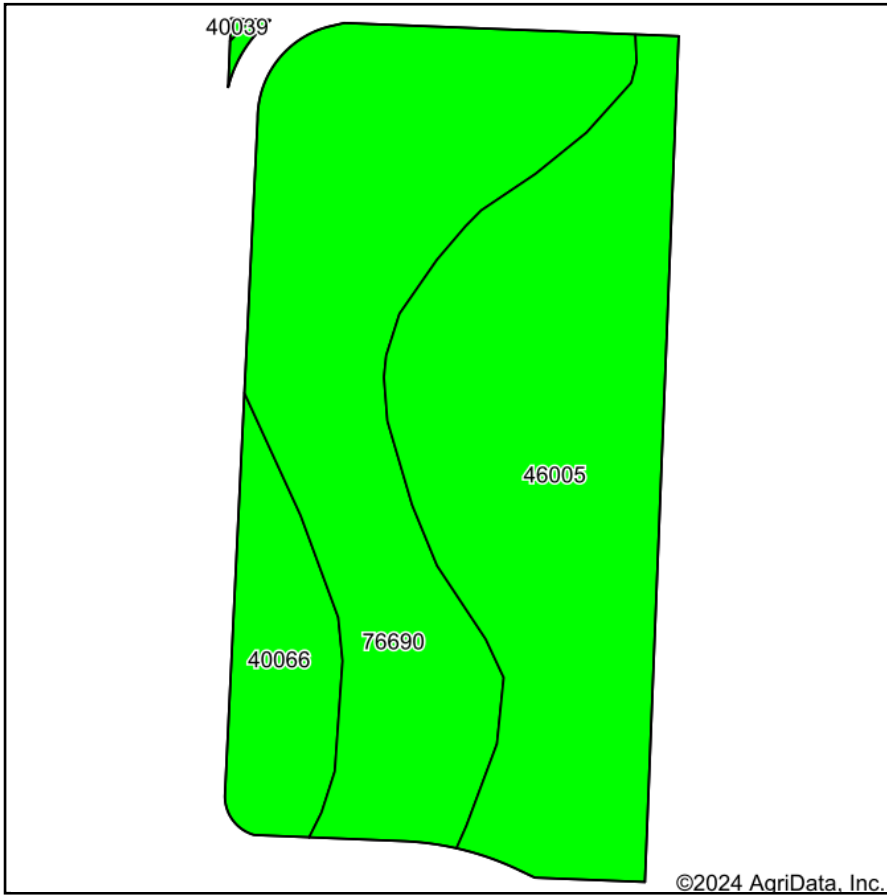
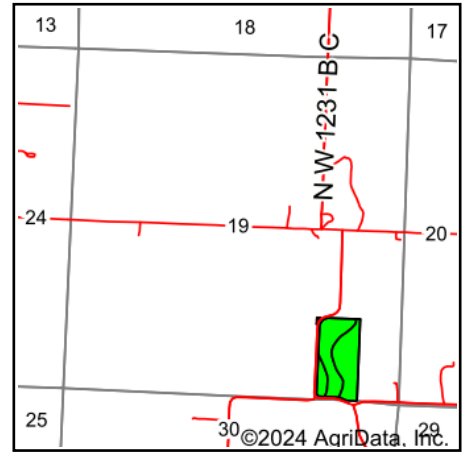


Soils Map



Soils data provided by USDA and NRCS.



State: **Missouri**
 County: **Benton**
 Location: **19-43N-23W**
 Township: **White**
 Acres: **17.89**
 Date: **11/14/2024**



Area Symbol: MO015, Soil Area Version: 29

Code	Soil Description	Acres	Percent of field	Non-Irr Class Legend	Non-Irr Class *c	Range Production (lbs/acre/yr)	Corn Bu	Soybeans Bu	*n NCCPI Overall	*n NCCPI Corn	*n NCCPI Soybeans
46005	Verdigris silt loam, 0 to 1 percent slopes, occasionally flooded	8.22	45.9%		IIw	7758			82	82	75
76690	Moniteau silt loam, 0 to 2 percent slopes, rarely flooded	7.85	43.9%		IIIw	0	7	2	83	82	70
40066	Hartwell silt loam, 0 to 1 percent slopes	1.82	10.2%		IIw	0			80	80	74
Weighted Average					2.44	3564.6	3.1	0.9	*n 82.2	*n 81.8	*n 72.7

*n: The aggregation method is "Weighted Average using all components"

*c: Using Capabilities Class Dominant Condition Aggregation Method