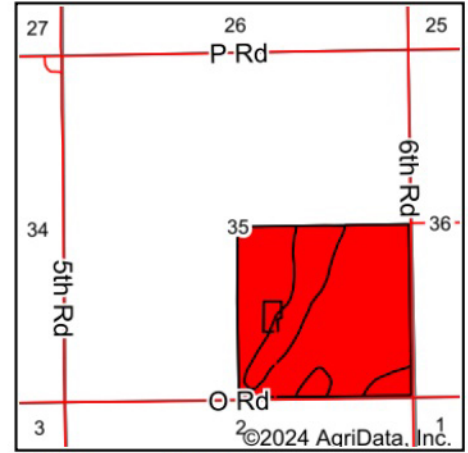
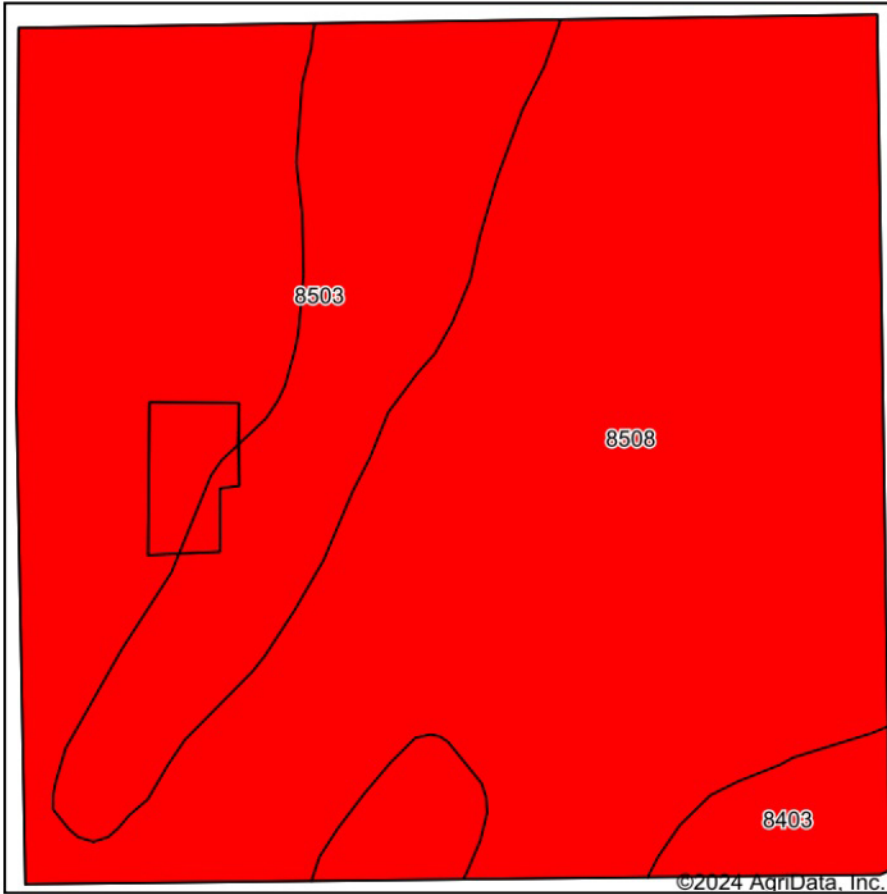


# Soils Map



State: **Nebraska**  
 County: **Merrick**  
 Location: **35-14N-8W**  
 Township: **Prairie Creek**  
 Acres: **156.23**  
 Date: **9/24/2024**

**BigIron**  
 REALTY

Maps Provided By:



© AgriData, Inc. 2023

www.AgriDataInc.com



Area Symbol: NE121, Soil Area Version: 23

Code	Soil Description	Acres	Percent of field	SRPG Legend	Non-Irr Class *c	Irr Class *c	SRPG	Corn Bu	Corn Irrigated Bu	Winter wheat Bu	*n NCCPI Soybeans
8508	Lex variant loam, occasionally flooded	120.81	77.3%		IVs	IIIIs	33	35	87	25	23
8503	Lex loam, occasionally flooded	26.84	17.2%		IIIw	IIIw	38	64	148	32	26
8403	Alda loam, occasionally flooded	8.58	5.5%		IIIw	IIIw	33	61	142	31	22
<b>Weighted Average</b>											
					3.77	3.00	33.9	41.4	100.5	26.5	*n 23.5