

# D&D CATTLE CO.

— RED ANGUS AND ANGUS

— HERMAN, NE

**ANNUAL BULL SALE // APRIL 5, 2022**

OPEN HOUSE APRIL 3, 11-5 PM | BIDDING CLOSES TUESDAY APRIL 5



*Offering:*  
**RED ANGUS AND ANGUS**  
**YEARLING BULLS**

---





Welcome to  
**D&D CATTLE COMPANY'S  
ANNUAL PRODUCTION SALE!**

---

*Thank you for taking some time to review this year's offering. It is our commitment to each and every customer to help you find a bull that will fit the needs of your cattle operation. We want to make our program work for you and are eager to help in making your breeding decisions. Every year we work diligently to provide our customers with cattle that will improve their bottom line.*

*We have an outstanding set of bulls this year and feel they are solid from top to bottom. They come from some of the most impressive cows in our herd. These bulls are made to work for you and have been proven to "hold up" after a breeding season. Our mission has always been to raise cattle that excel both in the pasture and on the rail, and these bulls will produce calves to do just that. These bulls are easy keeping, moderate framed, balanced bulls with style, performance, and extreme docility. Utilizing 35 + years of whole herd data, from calving ease to carcass data, we have selected these bulls to help you be the most profitable with your herd goals.*

*Our bulls are raised with no creep feed. Why is this important to us? We want the weaning and growth data they exhibit in their EPD's to be a true reflection of the actual performance of the animal. Not only that, without creep feeding we can see the true productivity of the dam as well, which helps us make the best culling decisions for our herd.*

*Whether you are looking for your new herd sire or a calving ease bull, we have a bull that will work for you in a variety of environments. Quality beef is always in high demand from the pasture to the feedlot, it is our hope that this set of bulls will assist your program in continuing that success. With 25 + years of selling bulls to cattlemen across the U.S. and 50 + years of running our commercial cow herd, we are walking alongside our customers and understand the commercial cattlemen's needs.*

*If you're a long time customer or are viewing our program for the first time, we thank you for your interest in our genetics, and hope you find bulls that will fit your operation's breeding goals.*

*From conception to consumption we got ya covered.*

*Thank you for considering our program,  
D&D Cattle Crew*





# D&D CATTLE CO.

## — RED ANGUS AND ANGUS

## — HERMAN, NE

**ANNUAL BULL SALE // APRIL 5, 2022**  
OPEN HOUSE APRIL 3, 11-5 PM | BIDDING CLOSES TUESDAY APRIL 5

### CONTACTS

Dan Braesch ..... (402) 616-9448  
Pat Kroese, Big Iron Rep ..... (402) 741-2452  
Michaela Mann ..... (402) 237-1489  
Courtney Sukalski ..... (507) 236-9871

### BREEDING GUARANTEE

All bulls selling have been semen evaluated, scrotal measured, and have passed a breeding soundness exam. If bulls are not turned out within 90 days following sale, we suggest retesting your bull prior to turnout. All bulls selling for \$3,000 or more are guaranteed against breeding injury for the first breeding season. Breeding season is defined as the 90-day period following the first turnout of the bull. If there is a reproductive problem a replacement bull will be provided if available, or a credit equal to the animal's purchase price minus salvage value will be issued. The guarantee does not cover illness, mismanagement, neglect, or mortality to the animal. Buyer must notify us as soon as possible should injury occur, and prior to the injured bull being sold for salvage so that inspection of the animal may take place. A veterinarian inspection may be required.

This guarantee is not an insurance or mortality policy, but a guarantee on functional fertility. It is not a substitute or replacement for poor management. Buyer assumes all risks for injury due to running bulls together or management decisions outside genetic control. If a replacement cannot be provided of equal or greater value, we will issue a sale credit to be used in a future sale for the full purchase price less the salvage value of the animal.

### DELIVERY

Arrangements shall be made for pickup or delivery by April 15th. Bulls will be delivered prior to April 15th or must be picked up prior to that date. Bulls kept longer will be charged \$5.00 per day for feed. Free delivery of bulls within 150 miles of Herman, beyond that delivery is at cost.

### SALE FORMAT

This years' bull offering will be sold online at [www.BigIron.com](http://www.BigIron.com). Big Iron has recently begun selling livestock on their online weekly auctions, providing you with a number of benefits...

- Safe and convenient to use
- Easy-to-use platform allows you to review all bulls from one seamless dropdown
- Add bulls to your watchlist that you want to keep an eye on
- Bid on multiple lots up to 21 days prior to when the auction closes
- Auction extends for two minutes after each bid on the final day, ensuring everyone has a chance to place their bids
- All seller's contact information is listed on our website so you can call with questions

To learn more on how to setup a BigIron account and bid, visit: <https://bigironbuzz.com/getting-started>

Visit our website [www.DandDcattle.com](http://www.DandDcattle.com) for bull videos and pictures. Our website will also have a link to BigIron to register or place your bid.

The sale closes on Tuesday, April 5th at 5:00 pm. If you have additional questions on set-up, contact the BigIron Customer Service Team at (800) 937-3558. If you have any questions regarding the sale day bidding, you can call Pat Kroese, Big Iron Representative, at (402) 741-2452 or Dan at (402) 616-9448.

### STAR SYSTEM

- ★ Suitable for cows
- ★★ Calving ease traits present
- ★★★ Suitable for heifers

*Join Us!*

**OPEN HOUSE: APRIL 3, 11-5 PM**  
SOCIAL AND BULLS ON DISPLAY AT THE RANCH

**SALE: TUESDAY, APRIL 5**  
BIDDING CLOSES AT 5:00 PM

**BigIron**  
AUCTIONS

Bidding online at [www.bigiron.com](http://www.bigiron.com)

Unreserved Online Auction, ALL BULLS SELL!

Sale Rep Pat Kroese: (402) 741-2452





12J

- A Rangefinder son that is loaded with depth, wide from his hook to pins, yet keeps them level from front to back.
- He is a bull that is truly sound in all aspects.
- If you're wanting to add more overall quality to your cattle, be sure to check out this Herd Sire prospect!
- WN top 30%

www.DandDcattle.com



**D&D RANGEFINDER 12J**



DOB: 01/28/21 AAA: 20177821 TATTOO: 12J

GDAR LEUPOLD 298  
**RAML RANGEFINDER 7536**  
 RAML ROYCE 536

S A V BISMARCK 5682  
**D&D MISS BLACKCAP B49**  
 D&D MISS BLACKCAP Z22

A A R LEUPOLD 0578  
 GDAR MISS BLACKCAP 9232  
 TC ABERDEEN 759  
 RAML ROYCE 335  
 G A R GRID MAKER  
 S A V ABIGALE 0451  
 MYTTY IN FOCUS  
 D&D MISS BLACKCAP X04

CED	BW	WW	YW	CEM	MILK	MARB	REA	SM	SW
7	2.1	67	111	10	19	0.44	0.64	70	60
SF	SG	SB	SC	ACT. BW			ADJ. WW	ADJ. YW	
96	42	138	249	91			585	1100	



**D&D RANGER 121J**



DOB: 3/16/2021 RAAA: 4551897 TATTOO: 121J

LSF SRR WATCHMAN 5289C  
**LSF DDC WATCHMAN 9799G**  
 D&D CAS RED ROSE A35

LSF SRR WATCHMAN 5289C  
**D&D SUNBURST G924**  
 D&D SUNBURST E724

LSF NIGHT CALVER 9921W  
 LSF RR RAINDANCE U8026 Y1369  
 BECKTON EPIC R397 K  
 LSF RED ROSE J1011 R5072  
 LSF NIGHT CALVER 9921W  
 LSF RR RAINDANCE U8026 Y1369  
 D&D CATALYST 216Z  
 DBL TREE SUNBURST-910

ProS	HB	GM	CED	BW	WW	YW	MILK	ME	HPG
114	61	52	14	-3.4	70	114	29	10	15
CEM	STAY	MARB	YG	REA	ACT. BW	ADJ. WW	ADJ. YW		
9	15	0.34	0.07	0.52	74	655	1057		



- **Suitable for heifers.**
- If you are looking for THE heifer bull, here he is.
- Deep bodied with extra capacity, heavy muscled balanced bull.
- Check out these phenomenal EPDs, this bull has it all.
- ProS top 15%, GM top 17%, WN top 15%, YW top 15%, HPG top 6%, CEM top 17%, REA top 3%



121J





15J



**D&D JUSTIFIED 15J**

★★★

DOB: 02/05/21    AAA: 20285951    TATTOO: 15J

CONNEALY JUDGMENT  
**KG JUSTIFIED 3023**  
 KG MISS MAGIC 1443  
  
 S A V BRUISER 9164  
**D&D BLACK BEAUTY G99**  
 D&D BLACK BEAUTY W91

CONNEALY CONSENSUS 7229  
 ENTRINE OF CONANGA 9876  
 SITZ WISDOM 481T  
 KG MISS MAGIC 3528  
 S A V BISMARCK 5682  
 S A V MISS BOBBIE 7463  
 O C C MAGNITUDE 805M  
 D&D BLACK BEAUTY 82H

CED	BW	WW	YW	CEM	MILK	MARB	REA	\$M	\$W
8	0.1	55	98	6	23			88	53
\$F	\$G	\$B	\$C		ACT. BW	ADJ. WW	ADJ. YW		
79					67	641	1038		

- **Suitable for heifers.**
- *Here is a long bodied, smooth made Justified son. From the Black Beauty cow line, his dam and granddam are beautiful females.*
- *He should sire those easy keeping, deep bodied, beautiful uddered females that will make you wish you had more like them.*
- \$M top 3%



**D&D RANGEFINDER 11J**

★★★

DOB: 01/24/21    AAA: 20177820    TATTOO: 11J

GDAR LEUPOLD 298  
**RAML RANGEFINDER 7536**  
 RAML ROYCE 536  
  
 SITZ DILLON 93Y  
**D&D SYLVIA B46**  
 D&D SYLVIA 568

A A R LEUPOLD 0578  
 GDAR MISS BLACKCAP 9232  
 TC ABERDEEN 759  
 RAML ROYCE 335  
 S A V FINAL ANSWER 0035  
 SITZ PRIDE 88T  
 AVF REALLY WINDY 0022  
 D&D MONIQUE 212M

CED	BW	WW	YW	CEM	MILK	MARB	REA	\$M	\$W
10	-0.3	59	98	-10	23	0.47	0.59	62	60
\$F	\$G	\$B	\$C		ACT. BW	ADJ. WW	ADJ. YW		
85	43	128	228		74	544	1042		

- **Suitable for heifers.**
- *A soggy Rangefinder calving ease bull that is sleek looking.*
- CED top 20%, BW top 20%



11J





114J



**D&D TEDDY 114J**



DOB: 02/27/21      AAA: 20293732      TATTOO: 114J

EB TEDDY  
**EB TEDDY M0129**  
 EB ABERDEEN LASS M0129

S A V BRUISER 9164  
**D&D MISS BLACKCAP E715**  
 D&D MISS BLACKCAP X04

S A V RESOURCE 1441  
 MW BLACK POWER 304  
 TC ABERDEEN 759  
 B 598 LASS E B 1C28  
 S A V BISMARCK 5682  
 S A V MISS BOBBIE 7463  
 B C EMBLAZON 854E 8023  
 D&D MISS BLACKCAP S69

CED	BW	WW	YW	CEM	MILK	MARB	REA	SM	SW
12	-1.7	50	91	9	26			51	54
SF	SG	SB	SC	ACT. BW			ADJ. WW	ADJ. YW	
77				68			580	959	

- Suitable for heifers.
- CED top 10%, BW top 5%



116J



**D&D TEDDY 116J**



DOB: 02/17/21      AAA: 20293729      TATTOO: 116J

EB TEDDY  
**EB TEDDY M0129**  
 EB ABERDEEN LASS M0129

CONNEALY FINAL PRODUCT  
**D&D SHANNON Z27**  
 D&D SHANNON W98

S A V RESOURCE 1441  
 MW BLACK POWER 304  
 TC ABERDEEN 759  
 B 598 LASS E B 1C28  
 CONNEALY PRODUCT 568  
 EBONISTA OF CONANGA 471  
 O C C ECHELON 857E  
 D&D SHANNON S63

CED	BW	WW	YW	CEM	MILK	MARB	REA	SM	SW
10	-1.0	50	90	8	25	0.44	0.48	50	53
SF	SG	SB	SC	ACT. BW			ADJ. WW	ADJ. YW	
76	38	114	198	79			531	995	

- Suitable for heifers.
- Another smooth made EB Teddy bull.
- Dam is a well-made female that has produced many replacement bulls and heifers in our herd.
- CED top 20%, BW top 10%







**D&D MERLIN 13J**



DOB: 2/1/2021 RAAA: 4551891 TATTOO: 13J

LJC MERLIN T179  
**WFL MERLIN 018A**  
 WFL COMMITMENT 042Y

BIEBER CL ATOMIC C218  
**D&D QUEEN G99**  
 D&D QUEEN C58

LJC MISSION STATEMENT P27  
 BUF CRK REDPRIDE N179  
 BROWN COMMITMENT S7206  
 WFL JEWELMAKER 9024  
 ANDRAS FUSION R236  
 BIEBER DATELINE 308Y  
 HXC CONQUEST 4405P  
 SANTIAM'S QUEEN U12

ProS	HB	GM	CED	BW	WW	YW	MILK	ME	HPG
96	45	51	17	-4.1	74	121	30	5	8
CEM	STAY	MARB	YG	REA	ACT. BW	ADJ. WW	ADJ. YW		
9	15	0.46	-0.03	0.32	75	659	1095		

- **Suitable for heifers.**
- *Here is a Merlin son that will produce calves that perform, check out his EPDs!*
- *He is a long sided, thick made bull out of a matriarch in our herd.*
- *GM top 19%, CED top 4%, BW top 13%, YW top 7%, Milk top 9%, CEM top 15%, YG top 10%, REA top 13%*



**D&D WARDEN 120J**



DOB: 2/24/2021 RAAA: 4551889 TATTOO: 120J

LSF SRR WATCHMAN 5289C  
**LSF DDC WATCHMAN 9799G**  
 D&D CAS RED ROSE A35

5L HOTLINE 708-6093  
**D&D SUSAN G98**  
 D&D SUSAN C56

LSF NIGHT CALVER 9921W  
 LSF RR RAINDANCE U8026 Y1369  
 BECKTON EPIC R397 K  
 LSF RED ROSE J1011 R5072  
 5L NORSEMAN KING 2291  
 XXX MATTIE 708 HM  
 WS PRIME BEEF Z8  
 D&D SUSAN S64

ProS	HB	GM	CED	BW	WW	YW	MILK	ME	HPG
116	78	38	15	-2.3	66	105	25	5	12
CEM	STAY	MARB	YG	REA	ACT. BW	ADJ. WW	ADJ. YW		
10	17	0.37	-0.02	0.41	73	623	1061		

- **Suitable for heifers.**
- *Straight, level topped bull that is square hipped with great feet and legs.*
- *ProS top 13%, HB top 9%, CED top 18%, CEM top 4%, YG top 13%, REA top 7%*







**D**  
**D**

**D&D MERLIN 11J**

★★★

DOB: 2/14/2021      RAAA: 4551885      TATTOO: 11J

LJC MERLIN T179  
**WFL MERLIN 018A**  
WFL COMMITMENT 042Y

5L BOURNE 117-48A  
**D&D QUEEN E72**  
D&D QUEEN C58

LJC MISSION STATEMENT P27  
BUF CRK REDPRIDE N179  
BROWN COMMITMENT S7206  
WFL JEWELMAKER 9024  
5L ADVANTAGE 3267-221Y  
5L ROXIE 854-117  
HXC CONQUEST 4405P  
SANTIAM'S QUEEN U12

ProS	HB	GM	CED	BW	WW	YW	MILK	ME	HPG
79	30	49	15	-5.2	71	114	30	4	11
CEM	STAY	MARB	YG	REA	ACT. BW	ADJ. WW	ADJ. YW		
5	13	0.5	-0.03	0.37	71	619	961		

- **Suitable for heifers.**
- *Here is a stylish Merlin son that has the look and the numbers.*
- *CED top 15%, BW top 5%, WN top 13%, YW top 15%, Milk top 11%, YG and REA top 9%*



**D**  
**D**

**D&D MERLIN 12J**

★★★

DOB: 2/4/2021      RAAA: 4551887      TATTOO: 12J

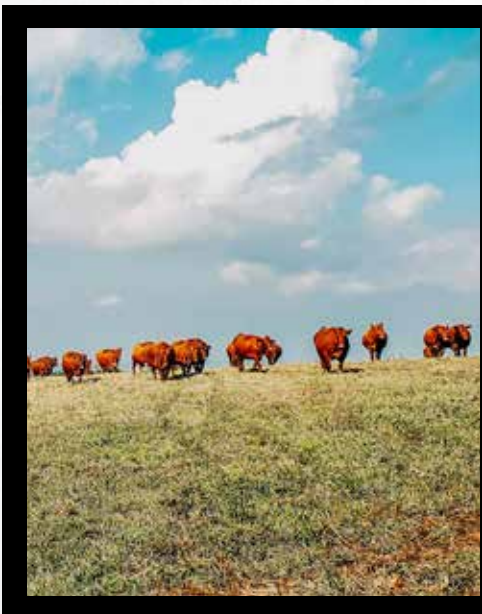
LJC MERLIN T179  
**WFL MERLIN 018A**  
WFL COMMITMENT 042Y

BROWN-TLSS MR REDEEMED B5191  
**D&D CRYSTAL G96**  
D&D CRYSTAL B41

LJC MISSION STATEMENT P27  
BUF CRK REDPRIDE N179  
BROWN COMMITMENT S7206  
WFL JEWELMAKER 9024  
BROWN JYJ REDEMPTION Y1334  
RICE MS Z717  
LSF RAB SOVEREIGN X7780  
LSF CRYSTAL J1352 P4018

ProS	HB	GM	CED	BW	WW	YW	MILK	ME	HPG
72	36	36	16	-4.4	72	115	32	5	9
CEM	STAY	MARB	YG	REA	ACT. BW	ADJ. WW	ADJ. YW		
9	12	0.40	-0.03	0.25	65	652	1040		

- **Suitable for heifers.**
- *Put a pair of these Merlin sons together and create some consistency in your next calf crop.*
- *CED and BW top 10%, WN top 12%, YW top 14%, Milk top 4%, CEM top 11%, YG top 10%*







**D&D JUSTIFIED 117J** ★

DOB: 02/01/21 AAA: 20285866 TATTOO: 117J

CONNEALY JUDGMENT  
**KG JUSTIFIED 3023**  
 KG MISS MAGIC 1443

EB RENOWN 131 OF MW  
**D&D BLACK BEAUTY G917**  
 D&D BLACK BEAUTY A311

CONNEALY CONSENSUS 7229  
 ENTRINE OF CONANGA 9876  
 SITZ WISDOM 481T  
 KG MISS MAGIC 3528  
 S A V RENOWN 3439  
 MW BLACK ROSE 131  
 MYTTY IN FOCUS  
 D&D BLACK BEAUTY X011

CED	BW	WW	YW	CEM	MILK	MARB	REA	SM	SW
	1.5	67	111		26				69
\$F	\$G	\$B	\$C	ACT. BW			ADJ. WW	ADJ. YW	
				78			710	1158	

- A deep bodied Justified bull out of our Black Beauty cow line.
- WN top 30%



**117J**



**D&D JUSTIFIED 14J** ★★

DOB: 01/25/21 AAA: 20177825 TATTOO: 14J

CONNEALY JUDGMENT  
**KG JUSTIFIED 3023**  
 KG MISS MAGIC 1443

CONNEALY INDUSTRY 5634  
**D&D BLACK BEAUTY G96**  
 D&D BLACK BEAUTY D617

CONNEALY CONSENSUS 7229  
 ENTRINE OF CONANGA 9876  
 SITZ WISDOM 481T  
 KG MISS MAGIC 3528  
 CONNEALY FREIGHTLINER  
 EILERA OF CONANGA 2583  
 VIN-MAR O'REILLY FACTOR  
 D&D BLACK BEAUTY B419

CED	BW	WW	YW	CEM	MILK	MARB	REA	SM	SW
5	1.2	64	113	7	26			90	63
\$F	\$G	\$B	\$C	ACT. BW			ADJ. WW	ADJ. YW	
86				78			642	1215	

- Soggy made Justified son with added depth and muscling.
- He is an overall powerhouse who stands on perfect feet and legs.
- \$M top 4%



**14J**



**D&D JUSTIFIED 13J** ★

DOB: 01/28/21 AAA: 20177824 TATTOO: 13J

CONNEALY JUDGMENT  
**KG JUSTIFIED 3023**  
 KG MISS MAGIC 1443

S A V BRUISER 9164  
**D&D RACHAEL G94**  
 D&D RACHAEL C516

CONNEALY CONSENSUS 7229  
 ENTRINE OF CONANGA 9876  
 SITZ WISDOM 481T  
 KG MISS MAGIC 3528  
 S A V BISMARCK 5682  
 S A V MISS BOBBIE 7463  
 JINDRA DOUBLE VISION  
 D&D RACHAEL R52

CED	BW	WW	YW	CEM	MILK	MARB	REA	SM	SW
5	1.4	64	113	7	26			90	63
\$F	\$G	\$B	\$C	ACT. BW			ADJ. WW	ADJ. YW	
86				79			699	1264	

- It is hard to find a fault in this stout, well-made bull; he definitely catches your eye.
- \$M top 2%

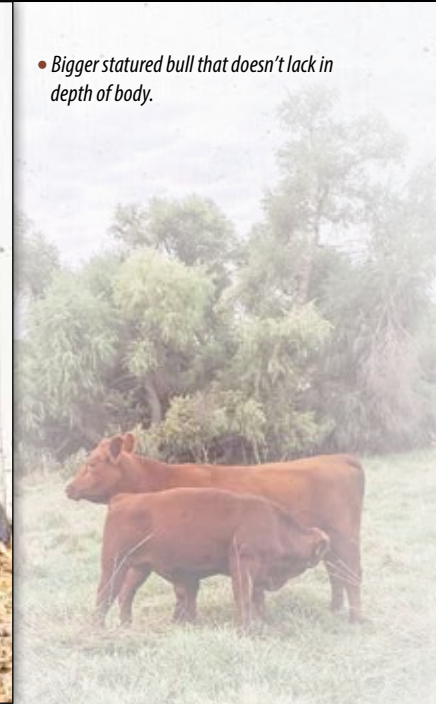


**13J**





• Bigger statured bull that doesn't lack in depth of body.



**D&D CAPITAL 112J**



DOB: 02/01/21    AAA: 20299380    TATTOO: 112J

EB TEDDY  
**EB TEDDY M0129**  
 EB ABERDEEN LASS M0129  
  
 CONNEALY FINAL PRODUCT  
**D&D NOVIA E710**  
 D&D NOVIA T72

S A V RESOURCE 1441  
 MW BLACK POWER 304  
 TC ABERDEEN 759  
 B 598 LASS E B 1C28  
 CONNEALY PRODUCT 568  
 EBONISTA OF CONANGA 471  
 MM FUTURES RIGHT 704  
 D&D NOVIA N37

CED	BW	WW	YW	CEM	MILK	MARB	REA	\$M	\$W
7	-0.3	53	98	6	26			49	54
\$F	\$G	\$B	\$C	ACT. BW		ADJ. WW		ADJ. YW	
78				80		642		1178	



**D&D MERLIN 16J**



DOB: 2/2/2021    RAAA: 4551907    TATTOO: 16J

LJC MERLIN T179  
**WFL MERLIN 018A**  
 WFL COMMITMENT 042Y  
  
 RED CORNER CREEK CASH 2R  
**D&D SAMANTHA G913**  
 D&D SAMANTHA C514

LJC MISSION STATEMENT P27  
 BUF CRK REDPRIDE N179  
 BROWN COMMITMENT S7206  
 WFL JEWELMAKER 9024  
 PIE ATLANTIC 2204  
 RED NORTHLINE PRINCESS 59L  
 BROWN PREMIER X7876  
 D&D SAMANTHA A32

ProS	HB	GM	CED	BW	WW	YW	MILK	ME	HPG
77	36	41	14	-2.1	84	131	30	3	8
CEM	STAY	MARB	YG	REA	ACT. BW	ADJ. WW	ADJ. YW		
8	12	0.38	-0.07	0.45	74	719	1161		



[www.DandDcattle.com](http://www.DandDcattle.com)

- A Merlin son that will sire those deep, easy fleshing cattle that convert little feed into pounds; look at his numbers!
- WN top 1%, YW top 2%, Milk to 9%, YG top 4%, REA top 5%







**D&D MERLIN 18J**



DOB: 2/2/2021 RAAA: 4551895 TATTOO: 18J

LJC MERLIN T179  
**WFL MERLIN 018A**  
 WFL COMMITMENT 042Y

LSF SRR WATCHMAN 5289C  
**D&D MISS TIMES G922**  
 D&D MISS TIMES E77

LJC MISSION STATEMENT P27  
 BUF CRK REDPRIDE N179  
 BROWN COMMITMENT S7206  
 WFL JEWELMAKER 9024  
 LSF NIGHT CALVER 9921W  
 LSF RR RAINDANCE U8026 Y1369  
 5L BOURNE 117-48A  
 D&D MISS TIMES C522

ProS	HB	GM	CED	BW	WW	YW	MILK	ME	HPG
74	20	55	9	-4.0	85	136	35	7	12
CEM	STAY	MARB	YG	REA	ACT. BW	ADJ. WW	ADJ. YW		
1	13	0.41	-0.05	0.61	71	739	1154		

- Another deep bodied Merlin son with an impressive set of numbers.
- GM top 14%, BW top 14%, Wean and YW top 1%, Milk top 1%, REA top 1%



18J



**D&D MERLIN 19J**



DOB: 1/31/2021 RAAA: 4551909 TATTOO: 19J

LJC MERLIN T179  
**WFL MERLIN 018A**  
 WFL COMMITMENT 042Y

BIEBER CL ATOMIC C218  
**D&D MARIA G940**  
 D&D MARIA D610

LJC MISSION STATEMENT P27  
 BUF CRK REDPRIDE N179  
 BROWN COMMITMENT S7206  
 WFL JEWELMAKER 9024  
 ANDRAS FUSION R236  
 BIEBER DATELINE 308Y  
 GMRA TRILOGY 0226  
 D&D MARIA X05

ProS	HB	GM	CED	BW	WW	YW	MILK	ME	HPG
94	46	48	15	-1.9	82	131	32	6	9
CEM	STAY	MARB	YG	REA	ACT. BW	ADJ. WW	ADJ. YW		
9	14	0.48	-0.04	0.40	77	690	1128		

- One of those bulls that will be used on cows and sire calves that every time one is born, I say I need more of these kind.
- CED top 20%, WW and YW top 2%, Milk top 5%, CEM top 19%, YG top 8%, REA top 7%,



19J



**D&D MERLIN 15J**



DOB: 2/7/2021 RAAA: 4551905 TATTOO: 15J

LJC MERLIN T179  
**WFL MERLIN 018A**  
 WFL COMMITMENT 042Y

BIEBER CL ATOMIC C218  
**D&D FIONA G912**  
 D&D FIONA C510

LJC MISSION STATEMENT P27  
 BUF CRK REDPRIDE N179  
 BROWN COMMITMENT S7206  
 WFL JEWELMAKER 9024  
 ANDRAS FUSION R236  
 BIEBER DATELINE 308Y  
 BIEBER ROUSE SAMURAI X22  
 D&D FIONA X04

ProS	HB	GM	CED	BW	WW	YW	MILK	ME	HPG
93	42	50	14	-0.5	92	145	33	5	8
CEM	STAY	MARB	YG	REA	ACT. BW	ADJ. WW	ADJ. YW		
8	13	0.49	0.00	0.34	86	773	1171		

- A great breeding bull that is extremely balanced.
- It is hard to find fault in this stout, well-made bull; he definitely catches your eye.
- WW and YW top 1%, Milk top 2%, YG top 19%, REA top 12%



15J





18J



**D&D ASSET 18J**

★★★

DOB: 02/25/21      AAA: 20299379      TATTOO: 18J

EB TEDDY  
**EB TEDDY M0129**  
 EB ABERDEEN LASS M0129  
  
 MOHNEN IMPRESSIVE 1093  
**D&D SOPHIE D66**  
 D&D SOPHIE Y11

S A V RESOURCE 1441  
 MW BLACK POWER 304  
 TC ABERDEEN 759  
 B 598 LASS E B 1C28  
 BASIN EXCITEMENT  
 MOHNEN JILT 787  
 CONNEALY INDUSTRY 5634  
 D&D SOPHIE S61

CED	BW	WW	YW	CEM	MILK	MARB	REA	SM	SW
10	-1.0	50	88	7	26	0.45	0.44	54	54
SF	SG	SB	SC	ACT. BW			ADJ. WW	ADJ. YW	
75	37	112	199	77				1048	

- Suitable for heifers.
- CED top 20%, BW top 10%



19J



**D&D TEDDY 19J**

★★★

DOB: 02/24/21      AAA: 20293730      TATTOO: 19J

EB TEDDY  
**EB TEDDY M0129**  
 EB ABERDEEN LASS M0129  
  
 RAB NEW STANDARD 181A  
**D&D NICOLE D622**  
 D&D NICOLE A35

S A V RESOURCE 1441  
 MW BLACK POWER 304  
 TC ABERDEEN 759  
 B 598 LASS E B 1C28  
 LCC NEW STANDARD  
 RAB MS PROTEGE 656W  
 S A V THUNDERBIRD 9061  
 D&D NICOLE X08

CED	BW	WW	YW	CEM	MILK	MARB	REA	SM	SW
10	-1.5	59	105	8	24	0.59	0.51	58	62
SF	SG	SB	SC	ACT. BW			ADJ. WW	ADJ. YW	
87	44	131	228	72			521	967	

- Suitable for heifers.
- Another nice Teddy son that has a bit more muscle and depth.
- You will like him from all angles.
- CED top 20%, BW top 10%



115J



**D&D TEDDY 115J**

★★★

DOB: 03/04/21      AAA: 20293728      TATTOO: 115J

EB TEDDY  
**EB TEDDY M0129**  
 EB ABERDEEN LASS M0129  
  
 B C EMBLAZON 854E 8023  
**D&D SHANNON X02**  
 D&D SHANNON S63

S A V RESOURCE 1441  
 MW BLACK POWER 304  
 TC ABERDEEN 759  
 B 598 LASS E B 1C28  
 O C C EMBLAZON 854E  
 CAF PURE PRIDE C 108  
 NORTHERN IMPROVEMENT 4480 GF  
 D&D BLACKCAP 519

CED	BW	WW	YW	CEM	MILK	MARB	REA	SM	SW
12	-2.1	43	77	9	27	0.37	0.45	46	50
SF	SG	SB	SC	ACT. BW			ADJ. WW	ADJ. YW	
72	35	107	185	66			529	892	

- Suitable for heifers.
- CED top 10%, BW top 3%





**D&D TEDDY 118J**



DOB: 02/28/21 AAA: 20293733 TATTOO: 118J

EB TEDDY  
**EB TEDDY M0129**  
 EB ABERDEEN LASS M0129

S A V RESOURCE 1441  
 MW BLACK POWER 304  
 TC ABERDEEN 759  
 B 598 LASS E B 1C28  
 CONNEALY MENTOR 7374  
 JAZE OF CONANGA 234  
 S A V BISMARCK 5682  
 D&D MISS BLACKCAP Z22

CONNEALY COUNSELOR  
**D&D MISS BLACKCAP E76**  
 D&D MISS BLACKCAP B49

CED	BW	WW	YW	CEM	MILK	MARB	REA	SM	SW
11	-1.4	55	97	6	26			51	60
\$F	\$G	\$B	\$C	ACT. BW		ADJ. WW		ADJ. YW	
77				81		587		1080	

- **Suitable for heifers.**
- Here is a well-made, balanced bull that is a true eye catcher.
- A sharp looking bull that is attractive from any angle.
- CED top 15%, BW top 10%



**118J**



**D&D NITROGEN 116J**



DOB: 3/7/2021 RAAA: 4551911 TATTOO: 116J

LSF MEW PLATINUM 5660C  
**D&D PLATINUM 82F**  
 LSF DELLA P4078 U8051

BROWN INCREDABULL Z7277  
 BROWN MS NEW STANDARD A7053  
 FEDDES BIG SKY R9  
 LSF DELLA G1372 P4078  
 MESSMER PACKER S008  
 GMRA LAKOTA 625  
 BARM BUSTER 603-4005  
 LSF FIONA 881 SO 365

GMRA TRILOGY 0226  
**D&D SUSAN D69**  
 D&D SUSAN S64

ProS	HB	GM	CED	BW	WW	YW	MILK	ME	HPG
114	53	61	15	-4.4	48	84	26	15	13
CEM	STAY	MARB	YG	REA	ACT. BW		ADJ. WW		ADJ. YW
10	16	0.59	0.11	0.22	76		564		1058

- **Suitable for heifers.**
- Out of our herd bull Platinum, he is a bull that gets out and strides and plants his feet in his tracks. Be sure to check out his numbers!
- Pros top 14%, GM top 8%, CED top 15%, BW top 10%, HPG top 19%, CEM top 4%, Marb top 14%



**116J**



**D&D SENTINEL 122J**



DOB: 2/23/2021 RAAA: 4551899 TATTOO: 122J

LSF SRR WATCHMAN 5289C  
**LSF DDC WATCHMAN 9799G**  
 D&D CAS RED ROSE A35

LSF NIGHT CALVER 9921W  
 LSF RR RAINDANCE U8026 Y1369  
 BECKTON EPIC R397 K  
 LSF RED ROSE J1011 R5072  
 LSF NIGHT CALVER 9921W  
 LSF RR RAINDANCE U8026 Y1369  
 HXC CONQUEST 4405P  
 D&D FIONA X04

LSF SRR WATCHMAN 5289C  
**D&D FIONA G928**  
 D&D FIONA Z25

ProS	HB	GM	CED	BW	WW	YW	MILK	ME	HPG
124	73	50	17	-5.4	59	98	26	9	14
CEM	STAY	MARB	YG	REA	ACT. BW		ADJ. WW		ADJ. YW
11	17	0.38	0.07	0.41	64		573		985

- **Suitable for heifers.**
- Another Watchman son that is long bodied and muscled, he pairs perfectly with 116J.
- If you are looking for a set of calving ease bulls, here they are!
- Pros top 7%, HB top 13%, GM top 20%, CED top 5%, BW top 4%, HPG top 11%, CEM top 2%, REA top 7%



**122J**





**D&D**

**D&D COPPER 119J**

★★★

**DOB: 2/20/2021      RAAA: 4551873      TATTOO: 119J**

LSF MEW PLATINUM 5660C  
**D&D PLATINUM 82F**  
 LSF DELLA P4078 U8051

D&D REDLINE 625  
**D&D REDBIRD X012**  
 D&D REDBIRD U88

BROWN INCREDABULL Z7277  
 BROWN MS NEW STANDARD A7053  
 FEDDES BIG SKY R9  
 LSF DELLA G1372 P4078  
 5L NORSEMAN KING 2291  
 LSF AMBROSIA F602 N3173  
 FEDDES BIG SKY R9  
 LSF BLACKBIRD 4055 MA326

ProS	HB	GM	CED	BW	WW	YW	MILK	ME	HPG
90	28	62	18	-5.3	49	86	25	14	12
CEM	STAY	MARB	YG	REA	ACT. BW	ADJ. WW	ADJ. YW		
11	12	0.54	0.05	0.35	63	576	1056		

- *Suitable for heifers.*
- *GM top 8%, CED top 3%, BW top 5%, CEM top 3%, REA top 11%*



**D&D**

**D&D TITANIUM 114J**

★★★

**DOB: 2/26/2021      RAAA: 4551883      TATTOO: 114J**

LSF MEW PLATINUM 5660C  
**D&D PLATINUM 82F**  
 LSF DELLA P4078 U8051

HXC CONQUEST 4405P  
**D&D QUEEN C58**  
 SANTIAM'S QUEEN U12

BROWN INCREDABULL Z7277  
 BROWN MS NEW STANDARD A7053  
 FEDDES BIG SKY R9  
 LSF DELLA G1372 P4078  
 BECKTON JULIAN GG B571  
 HXC ELLIE MAY MA638  
 LORENZEN CHEROKEE 4602  
 SANTIAM'S PRINCESS P51

ProS	HB	GM	CED	BW	WW	YW	MILK	ME	HPG
94	28	66	15	-4.5	51	91	26	14	11
CEM	STAY	MARB	YG	REA	ACT. BW	ADJ. WW	ADJ. YW		
6	15	0.57	0.10	0.26	81	573	1042		

- *Suitable for heifers.*
- *Out of the Queen cow line, this bull has the pedigree to produce those replacement females that will perform for you.*
- *GM top 5%, BW top 9%, Marb top 17%*



**D&D**

**D&D MERLIN 110J**

★

**DOB: 1/29/2021      RAAA: 4551875      TATTOO: 110J**

LJC MERLIN T179  
**WFL MERLIN 018A**  
 WFL COMMITMENT 042Y

RED NORTHLINE FAT TONY 605U  
**D&D SAMANTHA Y13**  
 BROWN MS VACATION N7921

LJC MISSION STATEMENT P27  
 BUF CRK REDPRIDE N179  
 BROWN COMMITMENT S7206  
 WFL JEWELMAKER 9024  
 RED SVR GANGSTER 14S  
 RED NORTHLINE RUBY 0305N  
 BROWN VACATION H7106  
 HCF SAMANTHA 041 OF 303

ProS	HB	GM	CED	BW	WW	YW	MILK	ME	HPG
68	39	29	12	-2.7	58	93	29	2	10
CEM	STAY	MARB	YG	REA	ACT. BW	ADJ. WW	ADJ. YW		
7	13	0.29	-0.12	0.32	83	553	1043		

- *Milk top 16%, YG top 2%, REA top 13%*





**D&D MERLIN 17J**



DOB: 2/7/2021 RAAA: 4551893 TATTOO: 17J

LJC MERLIN T179  
**WFL MERLIN 018A**  
 WFL COMMITMENT 042Y

LSF SRR WATCHMAN 5289C  
**D&D DUCHESS G921**  
 D&D DUCHESS E76

LJC MISSION STATEMENT P27  
 BUF CRK REDPRIDE N179  
 BROWN COMMITMENT S7206  
 WFL JEWELMAKER 9024  
 LSF NIGHT CALVER 9921W  
 LSF RR RAINDANCE U8026 Y1369  
 5L BOURNE 117-48A  
 D&D DUCHESS C521

ProS	HB	GM	CED	BW	WW	YW	MILK	ME	HPG
98	45	53	16	-2.5	83	133	31	6	12
CEM	STAY	MARB	YG	REA	ACT. BW	ADJ. WW	ADJ. YW		
9	12	0.38	-0.04	0.56	82	708	1199		

- Here is another solid made Merlin son with an outstanding set of EPDs.
- GM top 17%, CED top 14%, WW top 1%, YW top 2%, Milk top 6%, CEM top 17%, YG top 8%, REA top 2%



17J



**D&D MERLIN 14J**



DOB: 2/5/2021 RAAA: 4551903 TATTOO: 14J

LJC MERLIN T179  
**WFL MERLIN 018A**  
 WFL COMMITMENT 042Y

BIEBER CL ATOMIC C218  
**D&D FIONA G911**  
 D&D FIONA C510

LJC MISSION STATEMENT P27  
 BUF CRK REDPRIDE N179  
 BROWN COMMITMENT S7206  
 WFL JEWELMAKER 9024  
 ANDRAS FUSION R236  
 BIEBER DATELINE 308Y  
 BIEBER ROUSE SAMURAI X22  
 D&D FIONA X04

ProS	HB	GM	CED	BW	WW	YW	MILK	ME	HPG
50	2	47	5	-1.3	83	133	31	5	8
CEM	STAY	MARB	YG	REA	ACT. BW	ADJ. WW	ADJ. YW		
-1	13	0.49	0.00	0.28	82	691	1067		

- Merlin son with breed leading growth and performance traits.
- WW top 1%, YW top 2%, Milk top 6%, YG top 19%, REA top 18%



14J



**D&D NEW CHAPTER 17J**



DOB: 03/04/21 AAA: 20299381 TATTOO: 17J

PRAIRIE PRIDE NEXT STEP 2036  
**D&D NEXT STEP 917G**  
 D&D SHANNON X02

JINDRA DOUBLE VISION  
**D&D PRIDE D64**  
 SPRUCE MTN PRIDE 1850

SYDGEN 928 DESTINATION 5420  
 FLYING V MISS PRIDE 426  
 B C EMBLAZON 854E 8023  
 D&D SHANNON 563  
 CONNEALY REFLECTION  
 HOFF RACHEL 8312 405  
 KESSLERS FRONTMAN R001  
 SMR PRIDE 9224

CED	BW	WW	YW	CEM	MILK	MARB	REA	SM	SW
5	1.6	58	103	9	24	0.3	0.68	40	55
SF	SG	SB	SC						
90	38	128	206						
				ACT. BW	ADJ. WW	ADJ. YW			
				78	585	1084			



17J





**D&D NEXT PHASE 110J**



DOB: 03/18/21      AAA: 20293726      TATTOO: 110J

PRAIRIE PRIDE NEXT STEP 2036  
**D&D NEXT STEP 917G**  
 D&D SHANNON X02

S A V BRUISER 9164  
**D&D BLACK BEAUTY E72**  
 D&D BLACK BEAUTY A311

SYDGEN 928 DESTINATION 5420  
 FLYING V MISS PRIDE 426  
 B C EMBLAZON 854E 8023  
 D&D SHANNON S63  
 S A V BISMARCK 5682  
 S A V MISS BOBBIE 7463  
 MYTTY IN FOCUS  
 D&D BLACK BEAUTY X011

CED	BW	WW	YW	CEM	MILK	MARB	REA	\$M	SW
6	1.4	60	106	10	22	0.32	0.47	50	57
SF	SG	SB	SC	ACT. BW			ADJ. WW	ADJ. YW	
80	36	116	200	83			617	1095	



**D&D TEDDY 113J**



DOB: 3/3/2021      RAAA: 4551881      TATTOO: 113J

EB TEDDY  
**EB TEDDY M0129**  
 EB ABERDEEN LASS M0129

HXC CONQUEST 4405P  
**D&D SHARRI B415**  
 D&D SHARRI Z210

S A V RESOURCE 1441  
 MW BLACK POWER 304  
 TC ABERDEEN 759  
 B 598 LASS E B 1C28  
 BECKTON JULIAN GG B571  
 HXC ELLIE MAY MA638  
 RED CROWFOOT OLE'S OSCAR  
 D&D SHARRI W95

ProS	HB	GM	CED	BW	WW	YW	MILK	ME	HPG
87	26	61	12	-1.8	56	96	25	12	11
CEM	STAY	MARB	YG	REA	ACT. BW	ADJ. WW	ADJ. YW		
6	13	0.59	0.10	0.22	91	588	1109		

- Out of a Red Angus cow x Angus bull.
- He is a square hipped, clean fronted bull.





**D&D LITHIUM 115J** ★

DOB: 3/6/2021 RAAA: 4551901 TATTOO: 115J

LSF MEW PLATINUM 5660C  
**D&D PLATINUM 82F**  
 LSF DELLA P4078 U8051

HXC CONQUEST 4405P  
**D&D FIONA C524**  
 D&D FIONA A327

BROWN INCREDABULL Z7277  
 BROWN MS NEW STANDARD A7053  
 FEDDES BIG SKY R9  
 LSF DELLA G1372 P4078  
 BECKTON JULIAN GG B571  
 HXC ELLIE MAY MA638  
 SLGN SAKIC 072X  
 D&D FIONA U86

ProS	HB	GM	CED	BW	WW	YW	MILK	ME	HPG
87	31	57	11	-3.4	49	88	26	13	11
CEM	STAY	MARB	YG	REA	ACT. BW	ADJ. WW	ADJ. YW		
5	15	0.54	0.13	0.13	81	556	932		

• GM top 12%



**115J**



**D&D CHRONICLE 117J** ★★

DOB: 3/4/2021 RAAA: 4551913 TATTOO: 117J

LSF SAGA 1040Y  
**PIE SAGA 467**  
 PIE CENTENNIAL FORTUNE 2252

HXC CONQUEST 4405P  
**D&D SUSAN D615**  
 D&D SUSAN W96

BECKTON EPIC R397 K  
 LSF MINOLA T7172 W9041  
 TPIE WAGONMASTER 753  
 TPIE CENTENNIAL FORTUNE 6005  
 BECKTON JULIAN GG B571  
 HXC ELLIE MAY MA638  
 D&D STONEWALL 61S  
 D&D SUSAN S64

ProS	HB	GM	CED	BW	WW	YW	MILK	ME	HPG
96	75	20	14	-3.0	62	97	24	2	8
CEM	STAY	MARB	YG	REA	ACT. BW	ADJ. WW	ADJ. YW		
9	19	0.34	0.11	-0.07	81	659	1151		

• HB top 11%, CEM top 18%, STAY top 7%



**117J**



**D&D NARRATIVE 118J** ★★

DOB: 2/20/2021 RAAA: 4551915 TATTOO: 118J

LSF SAGA 1040Y  
**PIE SAGA 467**  
 PIE CENTENNIAL FORTUNE 2252

HXC CONQUEST 4405P  
**D&D MISS TIMES D617**  
 D&D MISS TIMES B422

BECKTON EPIC R397 K  
 LSF MINOLA T7172 W9041  
 TPIE WAGONMASTER 753  
 TPIE CENTENNIAL FORTUNE 6005  
 BECKTON JULIAN GG B571  
 HXC ELLIE MAY MA638  
 D&D BRANDISH 213Z  
 D&D MISS TIMES Y111

ProS	HB	GM	CED	BW	WW	YW	MILK	ME	HPG
78	60	18	12	-3.1	57	90	25	1	9
CEM	STAY	MARB	YG	REA	ACT. BW	ADJ. WW	ADJ. YW		
4	19	0.34	0.11	-0.10	81	611	1064		

• STAY top 9%



**118J**





**D&D SAGA 16J** ★

**DOB: 02/18/21      COMMERCIAL      ID: 16J**

LSF SAGA 1040Y  
**PIE SAGA 467**  
 PIE CENTENNIAL FORTUNE 2252  
  
 VIN-MAR O'REILLY FACTOR  
**AC54**  
 D&D MOLLY W93

BECKTON EPIC R397 K  
 LSF MINOLA T7172 W9041  
 TPIE WAGONMASTER 753  
 TPIE CENTENNIAL FORTUNE 6005  
 S A V FINAL ANSWER 0035  
 VIN-MAR EDELLA 2827  
 O C C MAGNITUDE 805M  
 D&D MOLLY 25M

BW	WW	YW	MILK
0.05	42	73	25

ACT. BW	ADJ. WW	ADJ. YW
86	562	1103

• Out of a registered Black Angus cow and registered Red Angus bull.



**16J**



**D&D SAGA 02J** ★

**DOB: 02/16/21      COMMERCIAL      ID: 02J**

LSF SAGA 1040Y  
**PIE SAGA 467**  
 PIE CENTENNIAL FORTUNE 2252  
  
 GMRA TRILOGY 0226  
**D&D SAPPHIRE E741**  
 D&D SAPPHIRE S62

BECKTON EPIC R397 K  
 LSF MINOLA T7172 W9041  
 TPIE WAGONMASTER 753  
 TPIE CENTENNIAL FORTUNE 6005  
 MESSMER PACKER S008  
 GMRA LAKOTA 625  
 5L NORSEMAN KING 2291  
 LSF CAMEO 2803

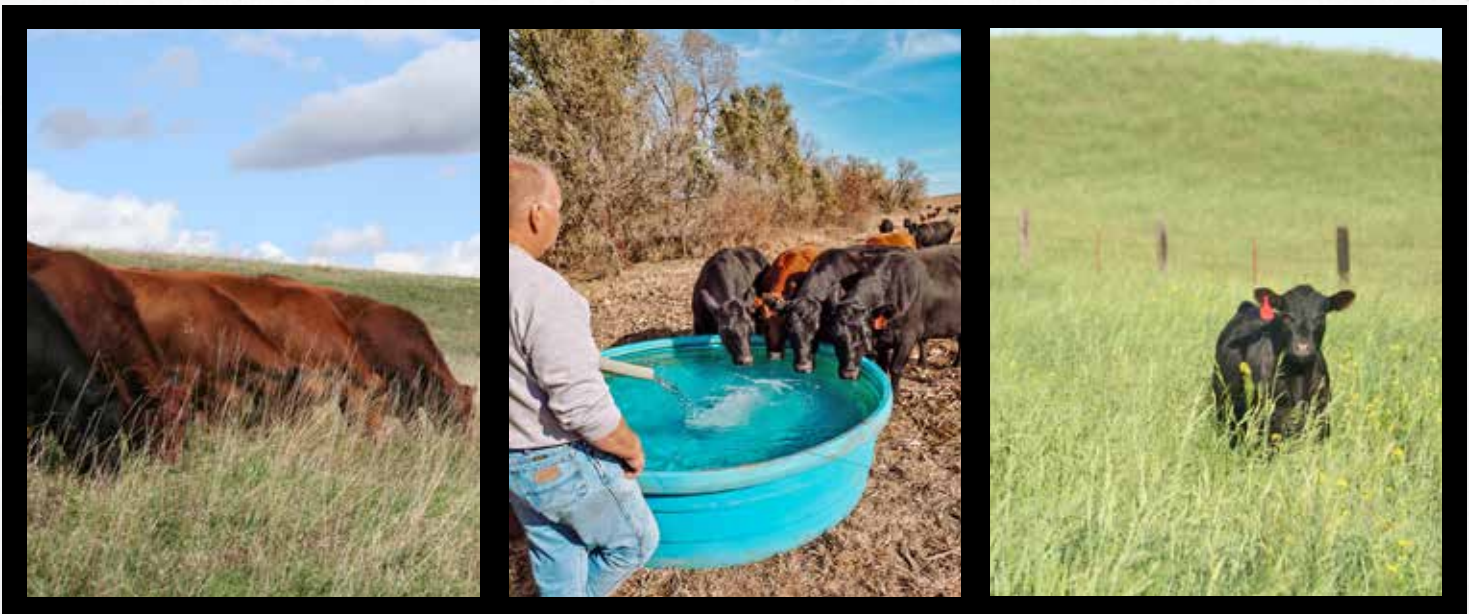
BW	WW	YW	MILK
-3.3	51	91	24

ACT. BW	ADJ. WW	ADJ. YW
77	577	1015

• He is a purebred Red Angus bull out of an unregistered dam.



**02J**





## D&D GENETICS PERFORM FOR YOU!

Cattle feeders and packers recognize the value in cattle sired by D&D bulls. Our genetics are known not only for phenotype and maternal characteristics but also for performance on the rail. Multiple factors influence profit, and genetics is one of those factors that we can help you with. Over the years, we have been collecting data on our calves' performance, looking at key traits not only in an animal's EPDs but also at the bunk.

A long time bull customer and family friend recently sent us their close out information from November 24, 2021. Here is an example of how our cattle perform for you:

- Dry matter conversion ..... 5.25
- Average daily gain ..... 5.03
- Average daily consumption ..... 44.37



D&D Beef is a branded beef program that Michaela started. All beef sold are D&D Cattle genetics and have graded upper 2/3 Choice and Prime. Knowing that our genetics will perform is why many of our bull customers retain ownership and sell on the grid.

**FROM OUR RANCH TO YOUR PLATE.**  
[www.DandDbeef.com](http://www.DandDbeef.com)  
 @D&D Beef @danddbeeef



## WASHCO FEED AND SUPPLY IS PROUD TO FEED AND SUPPORT D&D CATTLE COMPANY



**WashCo Feed & Supply**

217 North 10th Street  
 Blair, Nebraska  
 402-426-2620



We Are Your Local Purina Dealer





**D&D CATTLE CO.**

19526 County Road 4

Herman, NE 68029

[www.DandDcattle.com](http://www.DandDcattle.com)



# D&D CATTLE CO.

— RED ANGUS AND ANGUS

— HERMAN, NE

**ANNUAL BULL SALE // APRIL 5, 2022**

OPEN HOUSE APRIL 3, 11-5 PM | BIDDING CLOSSES TUESDAY APRIL 5

