

ABB Motors and Mechanical Inc. DATA TRANSMITTAL AND CERTIFICATION

Sales Order Number	Customer Number	Customer Order Number	P.O. Date
--------------------	-----------------	-----------------------	-----------

Lube Type	Grease
Grease Type	Exxon Polyrex EM
Grease Fittings Rqd	Yes
Grease Fitting Type	Alemite 1610 or equal
Grease Relief Fittings Rqd	Yes
Relief Fitting Type	Alemite

MECHANICAL

Balance	Standard (0.15 in/sec)
Rotation Facing ODE	Bi-directional
Fan Material	Standard
Paint System	Standard (C2)
Paint Color Specification	Standard Lacquer
Paint Color	Gold
Baldor-Reliance Paint Spec No	004824-007BWZ / MG1000Y03
Brake Requirement	Mounted Brake
Brake Type	Holding
Brake Torque	125
Brake Torque as a Number	125.0
Brake Service Factor	1.042
Brake Enclosure	IP23 - Enclosed
Brake Lead Location	Brake Exit (Flying Leads)
Brake Location	Special Bracket
Brake Voltage	1Ph/60Hz/230/460V
Brake Brand	Stearns
Brake Insulation	B
Brake Manual Release Type	Knob
Brake Application	General Industrial

CONDUIT BOX

Main Conduit Box	Required
Main Conduit Box Location	Standard (side)
Main Conduit Box Material	Aluminum
Main Conduit Box Size	Standard Oversize
Terminal Panel	No
Lead Entry Location	Toward Feet - Down

NAMEPLATE / LABELS

Nameplate Language	English
Additional heater Markings	No
Label UR	Yes
Efficiency Marking	DOE CC Mark Required

PACKAGING

Packaging Type	Standard Packing
----------------	------------------

DOCUMENTATION

Document Unit of Measure	US
Certified Dimension Sheet	Yes



[05/17/2023 13:16:16] - Page 3 of 13

BALDOR-RELIANCE

ABB Motors and Mechanical Inc. DATA TRANSMITTAL AND CERTIFICATION

Sales Order Number	Customer Number	Customer Order Number	P.O. Date
--------------------	-----------------	-----------------------	-----------

Performance Data/Curves	Yes
Standard Connection Diagram	Yes
Motor Instruction Manual	Yes
Renewal Parts List	Yes
Nameplate Data	Yes
Documentation Format	PDF

COMMERCIAL COMMENTS

Estimated Lead Time

Estimated Lead Time is based on plant loading at the time of quotation and is intended to be used as a guide for our customers. This estimation includes the Engineering and Manufacturing time only. It DOES NOT include shipping time. Please contact your ABB Motors and Mechanical Inc. representative if specific delivery requirements are needed.



Notes: Class null
Division null

Nameplate NP1256L

CAT.NO.			
SPEC.	12-0000-3150		
HP	40		
VOLTS	230/460		
AMP	100/50		
RPM	1675		
FRAME	324T	HZ 60	PH 3
SER.F.	1.00	CODE G	DES D CLASS F
NEMA-NOM-EFF	86.5	PF 87	
RATING	40C AMB-30 MIN		
CC		USABLE AT 208V	
DE	6312	ODE 6311	
ENCL	TEFC	SN	

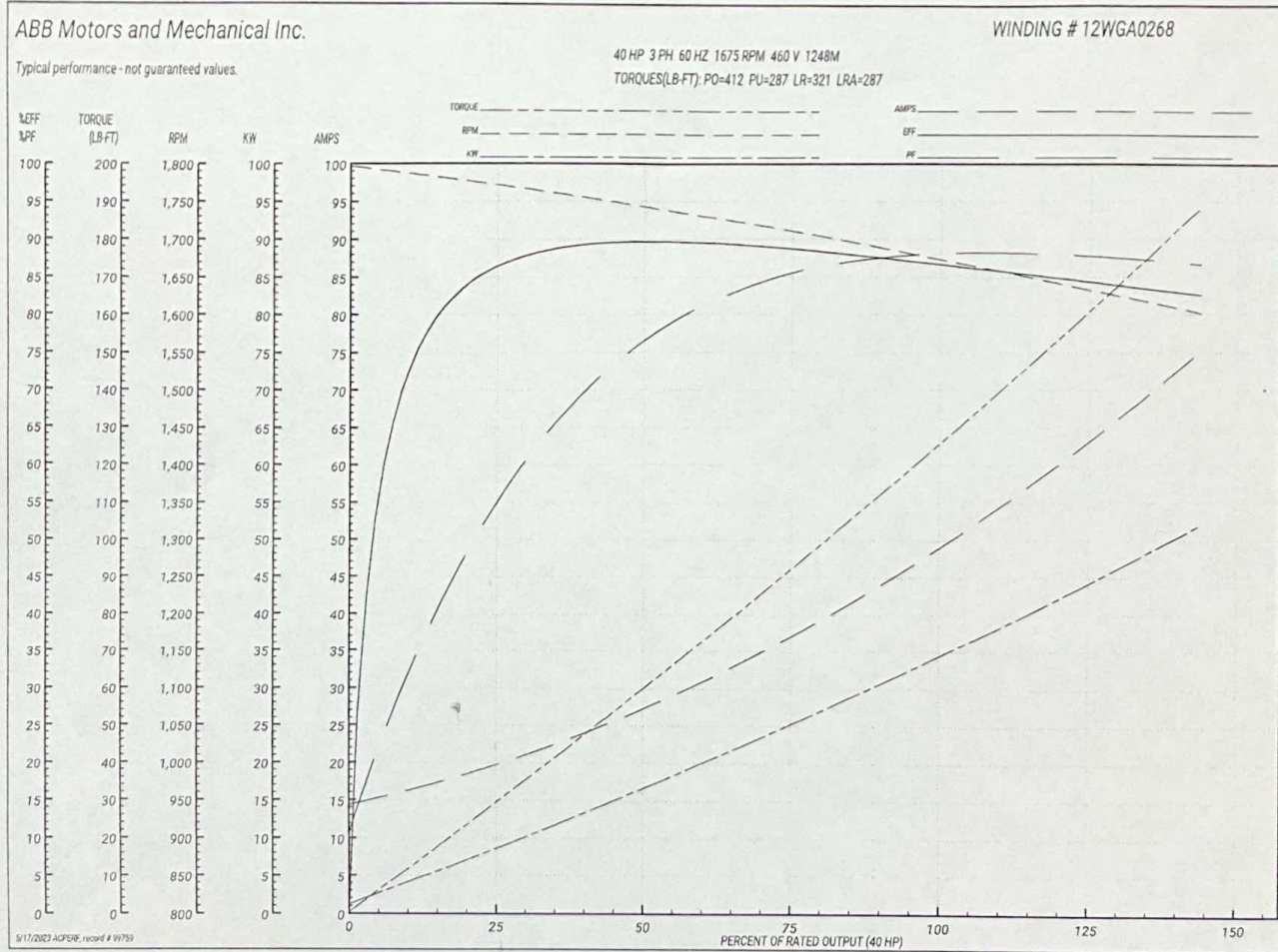
AC Induction Motor Performance Data
 Record # 99759
 Typical performance - not guaranteed values

Winding: 12WGA0268-R001		Type: 1248M	Enclosure: TEFC	
Nameplate Data			460 V, 60 Hz: High Voltage Connection	
Rated Output (HP)	40	Full Load Torque	126 LB-FT	
Volts	230/460	Start Configuration	direct on line	
Full Load Amps	100/50	Breakdown Torque	412 LB-FT	
R.P.M.	1675	Pull-up Torque	287 LB-FT	
Hz	60 Phase	3	Locked-rotor Torque	321 LB-FT
NEMA Design Code	D KVA Code	G	Starting Current	287 A
Service Factor (S.F.)		1	No-load Current	15 A
NEMA Nom. Eff.	86.5 Power Factor	87	Line-line Res. @ 25°C	0.161 Ω
Rating - Duty	40C AMB-30 MIN		Temp. Rise @ Rated Load	57°C
			Locked-rotor Power Factor	42.3
			Rotor inertia	6.41 lb-ft ²

Load Characteristics 460 V, 60 Hz, 40 HP

% of Rated Load	25	50	75	100	125	150
Power Factor	61	79	85	87	88	87
Efficiency	85.9	89	88.5	87.2	84.8	82.4
Speed	1768	1739	1708	1675	1641	1599
Line amperes	19	27.8	38.2	49.5	61.7	74.9

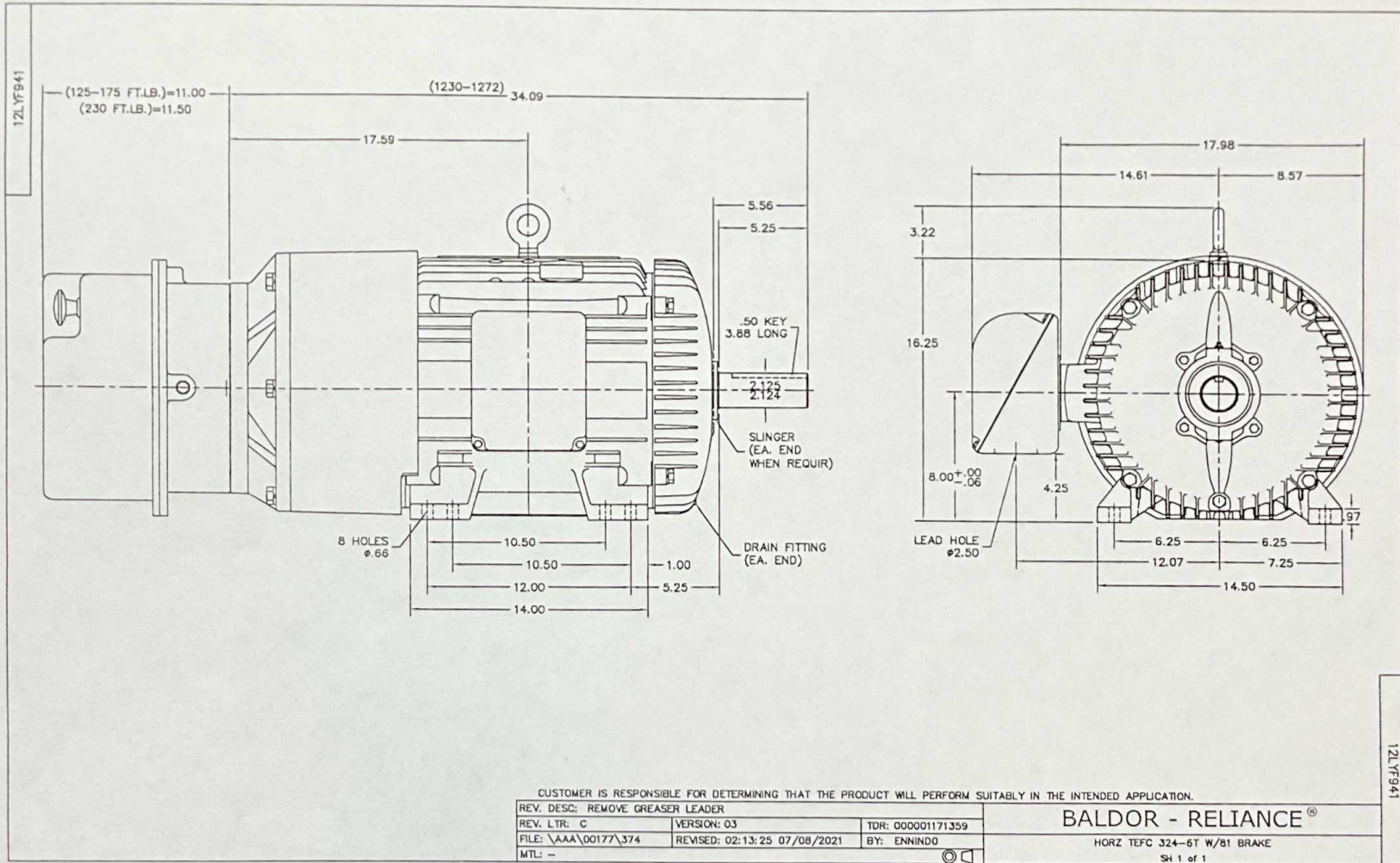
Performance Graph at 460V, 60Hz, 40.0HP Typical performance - Not guaranteed values



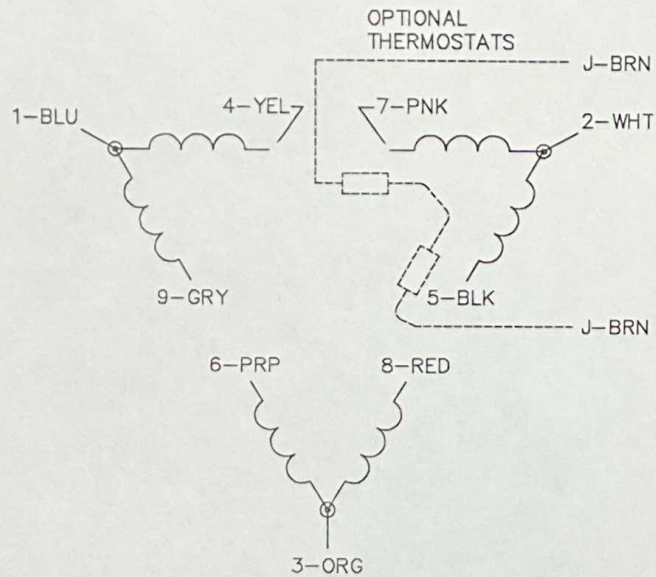
Parts List		
Part Number	Description	Quantity
LB1624	COMBINED WARNING LABEL, ISO/ANSI PICTOGR	1,000 EA
LC0181	CONNECTION LABEL	1,000 EA
LB1417	LABEL CARTON 6X4 PERFORATED BLANK ROLLS	1,000 EA
NP1256L	ALUM UL CSA CC INDUSTRIAL MOTOR A60	1,000 EA
85XU0407S04	4X1/4 U DRIVE PIN STAINLESS	2,000 EA
MN416A01	TAG-INSTAL-MAINT no wire (2100bx)4/22	1,000 EA
ML14-1E08	08 AWG, 1,BLUE	26,000 IN
12SL448H	MOD 312 ST LAM 4 P. 48 SLOT MM1007 25 GA	6,000 IN
INSKIT30253	CL,3PH,CL B&F,SLOT DES112, 6,000 STK, ST	1,000 EA
MW1000A17K	17 AWG,H,MW35,NATURAL,1000 LB.SPOOL	21,500 LB
MW1000A16K	16 AWG,H,MW35,NATURAL,1000 LB.SPOOL	36,000 LB
ML14-2A08	08 AWG, 2,WHITE	26,000 IN
ML14-3J08	08 AWG, 3,ORANGE	26,000 IN
ML14-4F08	08 AWG, 4,YELLOW	26,000 IN
ML14-5B08	08 AWG, 5,BLACK	26,000 IN
ML14-6L08	08 AWG, 6,PURPLE	26,000 IN
ML14-7K08	08 AWG, 7,PINK	26,000 IN
ML14-8C08	08 AWG, 8,RED	26,000 IN
ML14-9G08	08 AWG, 9,GREY	26,000 IN
MG5024	VARNISH PEDIGREE@ 8183 VT POLYESTER	0.070 GA
BG6311B03	6311 S.SH,C3,POLYREX EM	1,000 EA
BG6312A01	6312 OPEN,C3,SLUSH	1,000 EA
HW0001X03	BALANCING KIT, DIE CAST ROTORS 312/318 F	1,000 EA
RB3004A01	BRG RETAINER, MACH	1,000 EA

Parts List (continued)		
Part Number	Description	Quantity
12RD5248C28	ROTOR CORE, 0,78S 12ER4002	1,000 EA
12LAM	P/N TO CAPTURE COST ON THOW AWAY LAMINAT	6,000 IN
12SH1991B10	SH,TEFC,320,T,MR3008,6312,6311,E2=8.038,	1,000 EA
HW2501F46	KEY 5/16 SQ. X 6.00	1,000 EA
12SF1109A01	STATOR HOUSING 324-326T 312M W/MALE RABB	1,000 EA
HW3201A02	5/8-11 EYEBOLT	1,000 EA
HW1002A75	WASHER, 3/4 HI-COLLAR SPRLCKWSR	1,000 EA
HW3021L10	DRIVLOK SPRING PIN, 3/8 X 1", ROLL PIN	1,000 EA
09FN3001B03SP	EXTERNAL FAN, PLASTIC (COMES W/SCREW FRO	1,000 EA
HW2500A25	WOODRUFF KEY USA #1008 #BLOW CARBON STEE	1,000 EA
MJ1000A02	GREASE, POLYREX EM EXXON	0,200 LB
12EP1900A21	EP FAN COVER "O" DRAIN,W/O RET RING	1,000 EA
84XN5013A112	1/2-13 X 7.00 SOC HD CAP	4,000 EA
HW1001A50	LOCKWASHER 1/2, ZINC PLT.,879 OD, .509 I	4,000 EA
HW1001A63	WASHER, 5/8 SPLIT LK, ZN	6,000 EA
10XN6311K36	5/8-11 X 2.25 HEX HD CAP SCREW, GRADE 5	6,000 EA
HW5100A13	W4627-047 WVY WSHER	1,000 EA
HA4017A08	.125X3.50 GREASER EXTEN.	1,000 EA
HA4051A00	PLASTIC CAP FOR GREASE FITTING	1,000 EA
HW4500A03	GREASE FITTING, .125 NPT 1610(ALEMITE) 8	1,000 EA
HW4500A17	317400 ALEMITE GREASE RELIEF	1,000 EA
15194-75	PIPE PLUG 3/4-14 TAPERED THREAD	1,000 EA
HA4066A01	PUSH IN T-DRAIN FITTING (BLACK)	1,000 EA
HA7150A01	C-FACE ADPT MACH FOR 12EP1900 ENDPLATES	1,000 EA
12EP1106A77	PU ENDPLATE, MACH FOR "O" DRAIN	1,000 EA
HW1001A50	LOCKWASHER 1/2, ZINC PLT.,879 OD, .509 I	4,000 EA
10XN5013K28	1/2-13 X 1.75 HEX HEAD MACH SCREW,GRAD	4,000 EA

HW4600B41	V-RING SLINGER 2.125 X 2.880 X 0.280	1.000 EA
10XN3118K40	5/16-18 X 2.50" HEX HD, GRADE 5	4.000 EA
HW1001A31	LOCKWASHER 5/16, ZINC PLT.591 OD, .319 I	4.000 EA
RM1002A04SP	SEAL RING 310 FRAME 312 BRG	1.000 EA
HA4051A00	PLASTIC CAP FOR GREASE FITTING	1.000 EA
HW4500A03	GREASE FITTING, .125 NPT 1610(ALEMITE) 8	1.000 EA
HW4500A17	317400 ALEMITE GREASE RELIEF	1.000 EA
HA4066A01	PUSH IN T-DRAIN FITTING (BLACK)	1.000 EA
10CB3001	CONDUIT BOX CAST W/2.500 LEAD HOLE	1.000 EA
09GS1000	GASKET-CONDUIT BOX, 1/16 THICK LEXIDE	1.000 EA
10XN3118K16	5/16-18 X 1' GRADE #5, STL, ZINC PLATE	4.000 EA
HW1001A31	LOCKWASHER 5/16, ZINC PLT.591 OD, .319 I	4.000 EA
WD1000B25	GND LUG, BURNDY L125HP OR T&B L125HP-BB	1.000 EA
19XW3118G08	.31-18X.50,HEX WSHR HD,TAPTITE 2,GREEN	1.000 EA
10CB3500SP	CONDUIT BOX LID, CAST	1.000 EA
10GS1000SP	GASKET, CONDUIT BOX LID	1.000 EA
51XW2520A12	.25-20 X .75, TAPTITE II, HEX WSHR SLTD	4.000 EA
81BK1100CQF	1-081-011-02-CQF BRAKE	1.000 EA
84XN5013L16	1/2-13X1 NYLOK TYP HX SOCHD CAP SCREW TD	4.000 EA
HW2501F15	.312 X 1.625 LONG STD ST. SQUARE KEY	1.000 EA
MG1050Y01	CELEROL BALDOR GOLD	0.125 GA
10PA1042	CRATE 310 BRKTA 48X26-1/2X22-1/2SP12-1/2	1.000 EA
HW2501H33	KEY, 1/2 SQ X 3.875	1.000 EA



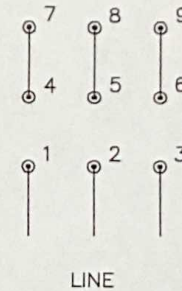
CD0180



LOW VOLTAGE
(2D)



HIGH VOLTAGE
(1D)



NOTES:

1. INTERCHANGE ANY TWO LINE LEADS TO REVERSE ROTATION.
2. OPTIONAL THERMOSTATS ARE PROVIDED WHEN SPECIFIED.
3. ACTUAL NUMBER OF INTERNAL PARALLEL CIRCUITS MAY BE A MULTIPLE OF THOSE SHOWN ABOVE.
4. LEAD COLORS ARE OPTIONAL. LEADS MUST ALWAYS BE NUMBERED AS SHOWN.

CD0180

REV. DESC: ADD CLASS CONN00000007		
REV. LTR: D	VERSION: 01	TDR: 000001099922
FILE: \AAA\00005\148	REVISED: 10:25:29 02/19/2019	BY: ENBRIRO
MTL: -		

BALDOR - RELIANCE®

3PH, DV, 9 LEADS, DELTA CONNECTION

SH 1 of 1