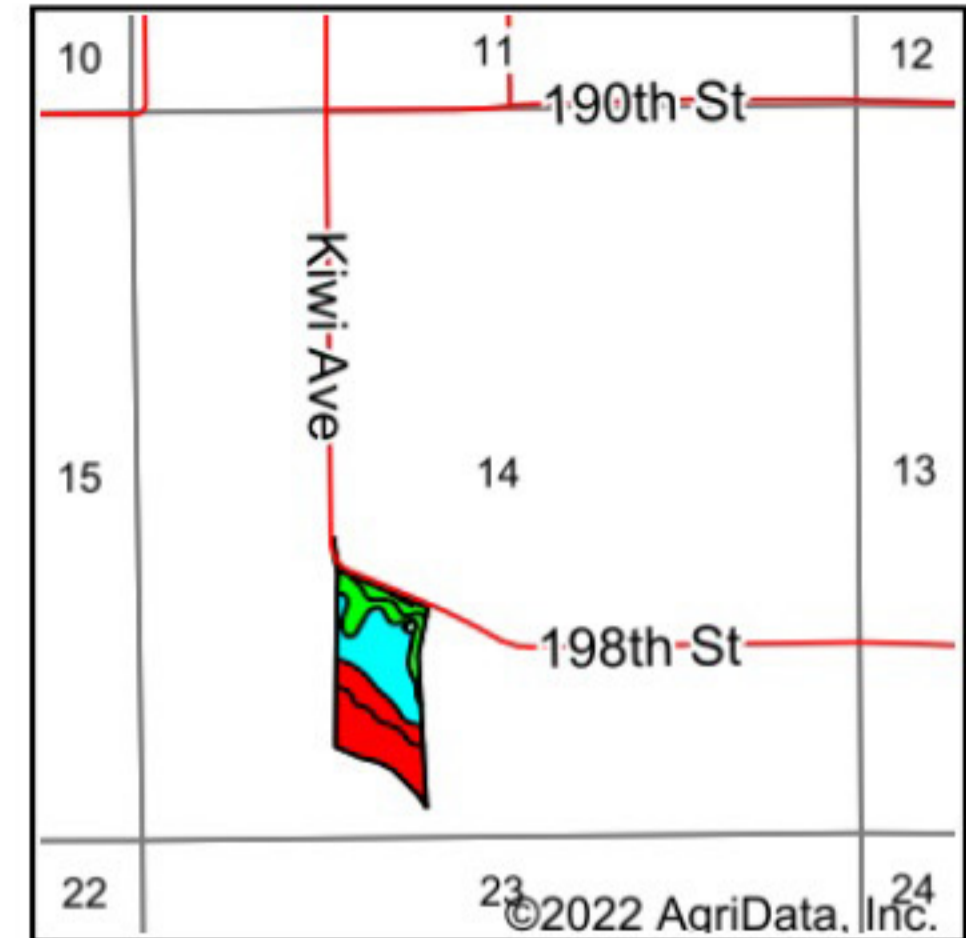
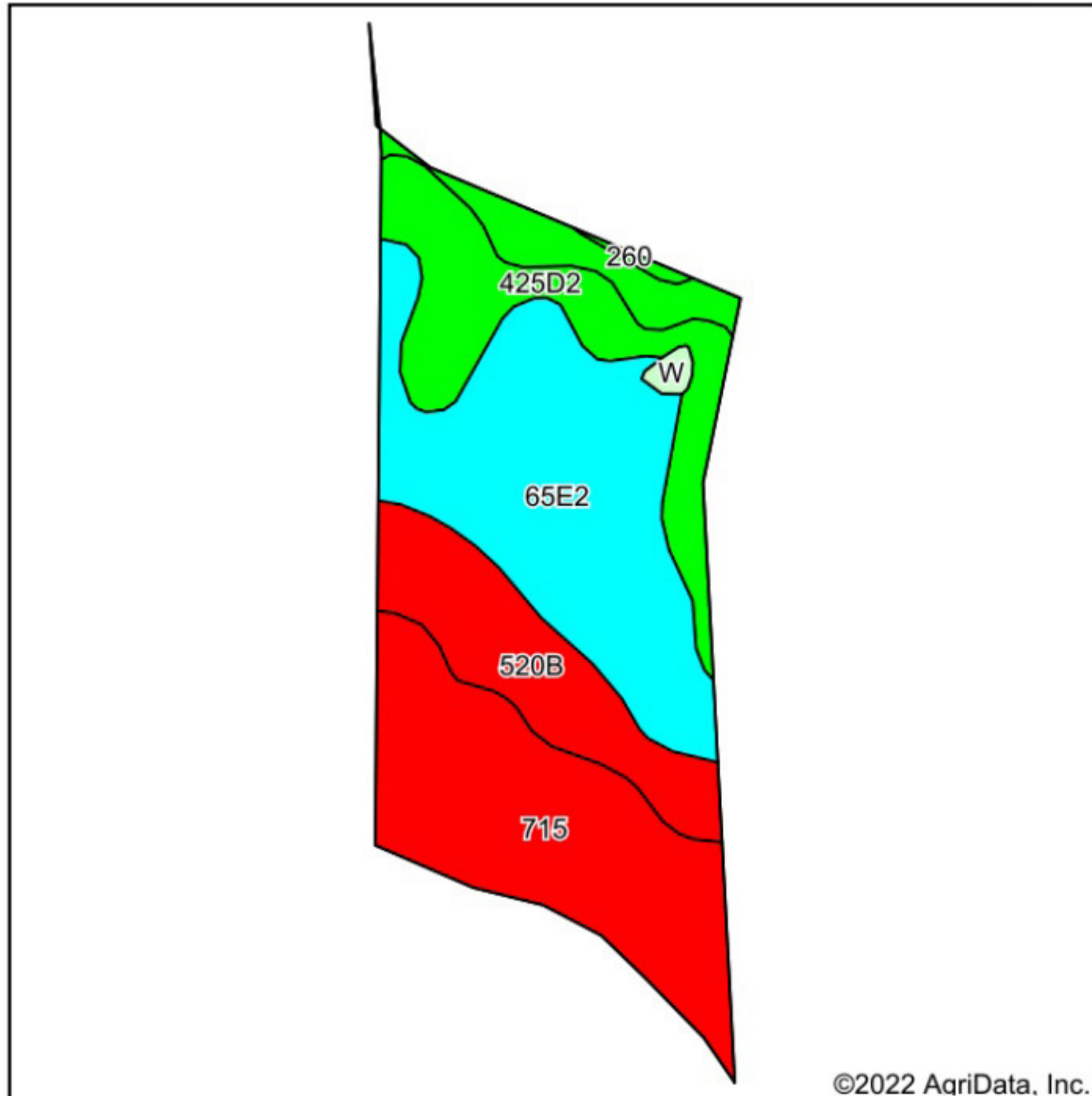


Soils Map



State: Iowa
 County: Davis
 Location: 14-69N-14W
 Township: Cleveland
 Acres: 19.16
 Date: 10/6/2022



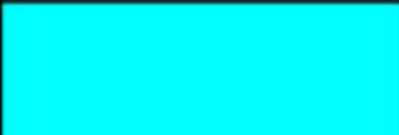



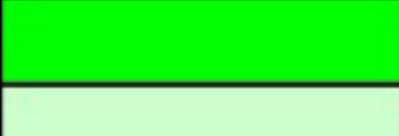
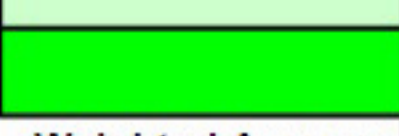
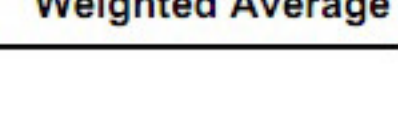
Maps Provided By:

 CUSTOMIZED ONLINE MAPPING
 © AgriData, Inc. 2021 www.AgriDataInc.com



Soils data provided by USDA and NRCS.

Area Symbol: IA051, Soil Area Version: 28

Code	Soil Description	Acres	Percent of field	Non-Irr Class Legend	Non-Irr Class *c	CSR2**	CSR	*n NCCPI Soybeans
65E2	Lindley loam, 14 to 18 percent slopes, moderately eroded	6.49	33.9%		Vle	29	28	55
715	Nodaway-Amana silt loams, 0 to 2 percent slopes	5.44	28.4%		Ilw	81	85	82
425D2	Keswick loam, 9 to 14 percent slopes, moderately eroded	3.14	16.4%		IVe	9	12	38
520B	Coppock silt loam, 2 to 5 percent slopes, rarely flooded	2.85	14.9%		Ilw	80	60	92
532B	Rathbun silt loam, 2 to 5 percent slopes	1.03	5.4%		Ille	55	49	64
W	Water	0.13	0.7%			0	0	
260	Beckwith silt loam, 0 to 2 percent slopes	0.08	0.4%		Illw	51	57	64
Weighted Average					*-	49.4	47.4	*n 65.5

**IA has updated the CSR values for each county to CSR2.

*n: The aggregation method is "Weighted Average using all components"

*c: Using Capabilities Class Dominant Condition Aggregation Method

*- Non Irr Class weighted average cannot be calculated on the current soils data due to missing data.