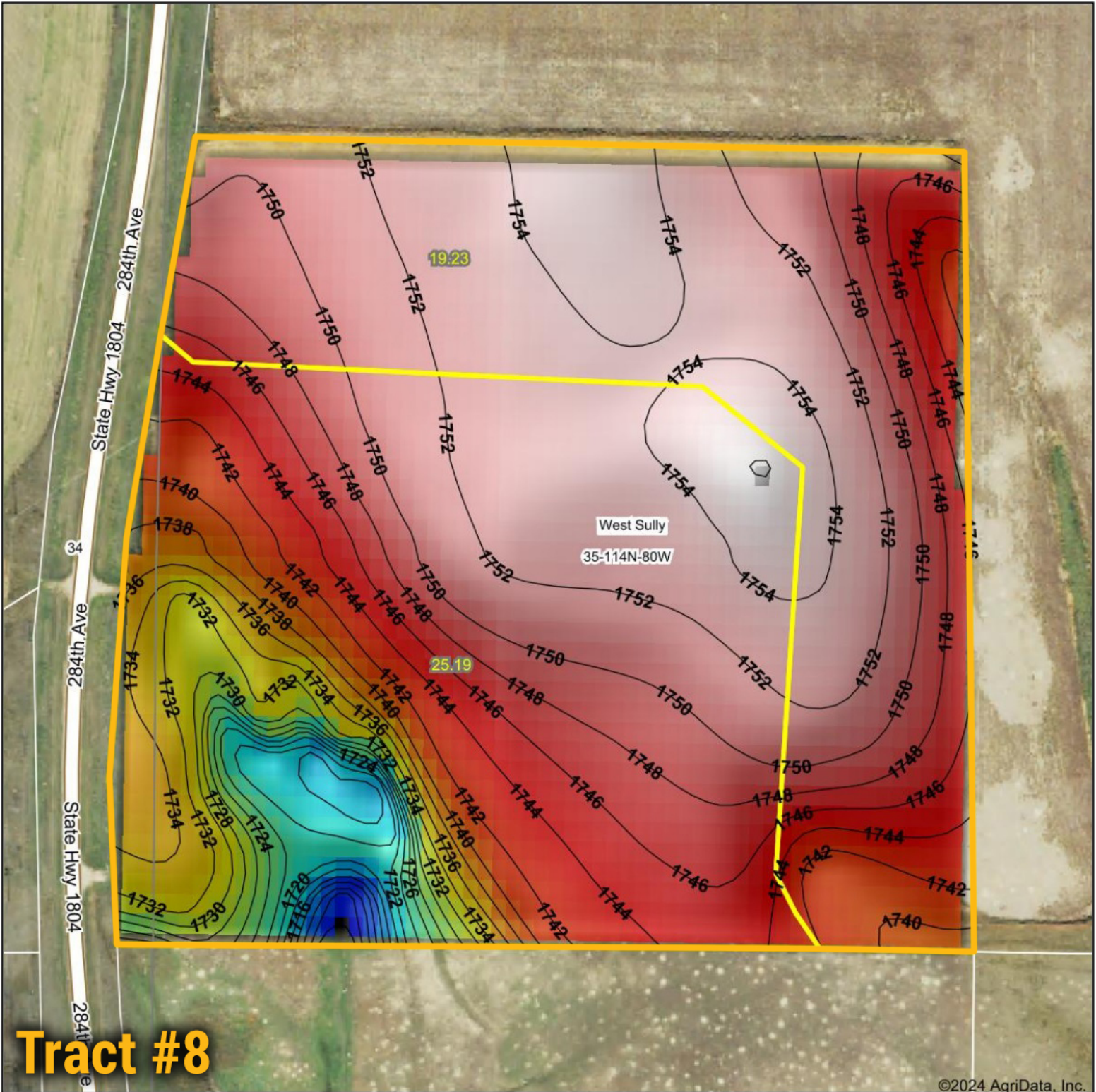
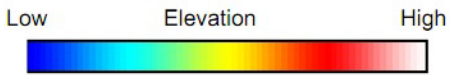


Topography Hillshade

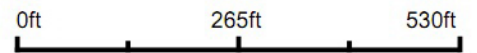


Tract #8

©2024 AgriData, Inc.



Source: USGS 10 meter dem
 Interval(ft): 2
 Min: 1,707.0
 Max: 1,756.1
 Range: 49.1
 Average: 1,745.7
 Standard Deviation: 9.25 ft



BigIron
REALTY

Maps Provided By:



© AgriData, Inc. 2023 www.AgriDataInc.com

Field borders provided by Farm Service Agency as of 5/21/2008.



11/21/2024

35-114N-80W
Sully County
South Dakota

Boundary Center: 44° 38' 36.07, -100° 26' 40.66