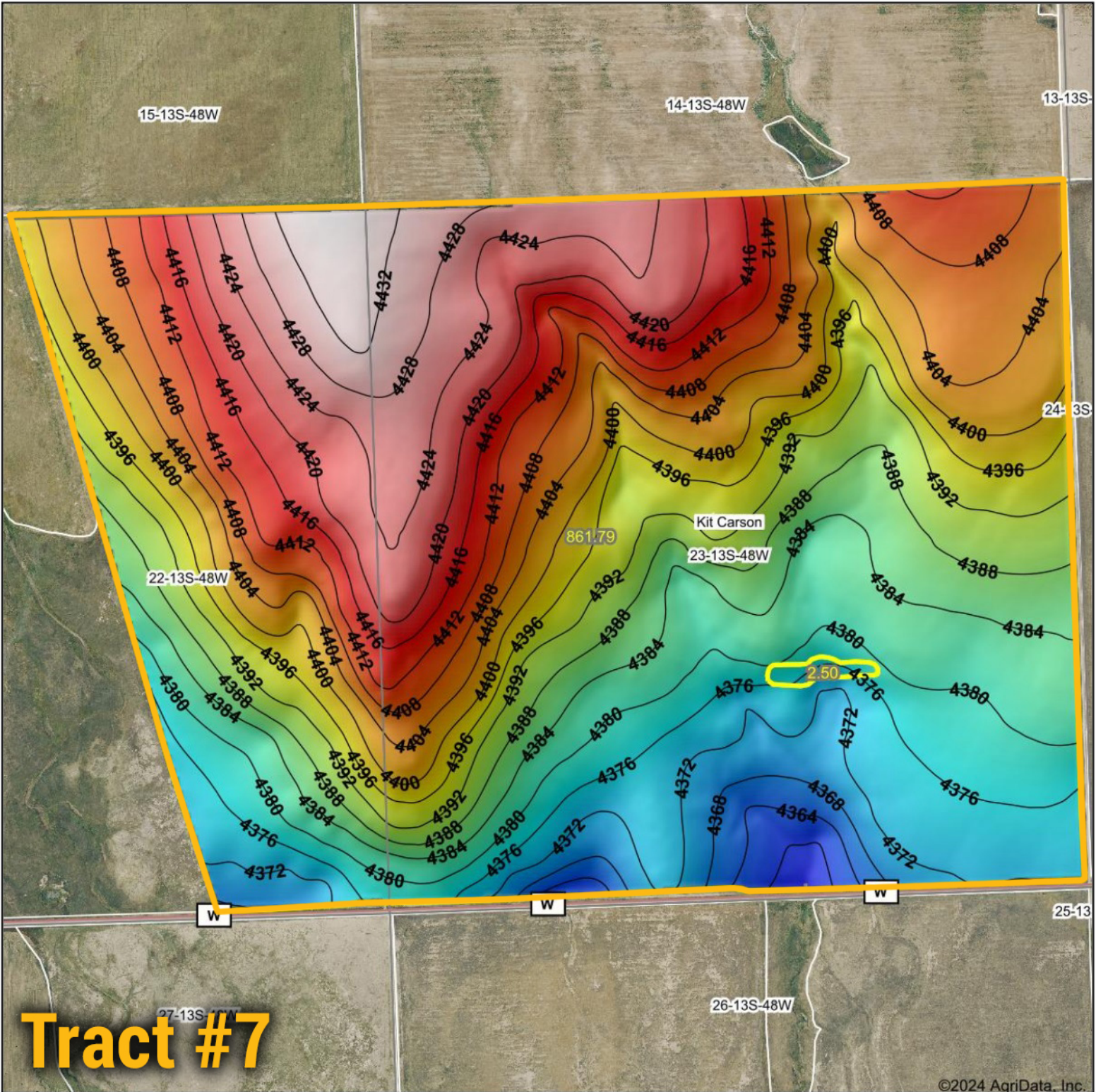
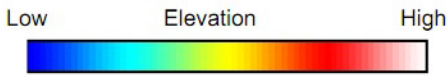


Topography Hillshade

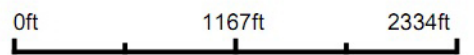


Tract #7

©2024 AgriData, Inc.



Source: USGS 10 meter dem
 Interval(ft): 4
 Min: 4,357.0
 Max: 4,434.5
 Range: 77.5
 Average: 4,397.4
 Standard Deviation: 18.18 ft



BigIron
REALTY

Maps Provided By:



© AgriData, Inc. 2023 www.AgriDataInc.com

Field borders provided by Farm Service Agency as of 5/21/2008.



9/11/2024

23-13S-48W
Cheyenne County
Colorado

Boundary Center: 38° 54' 8.93, -102° 45' 18.97