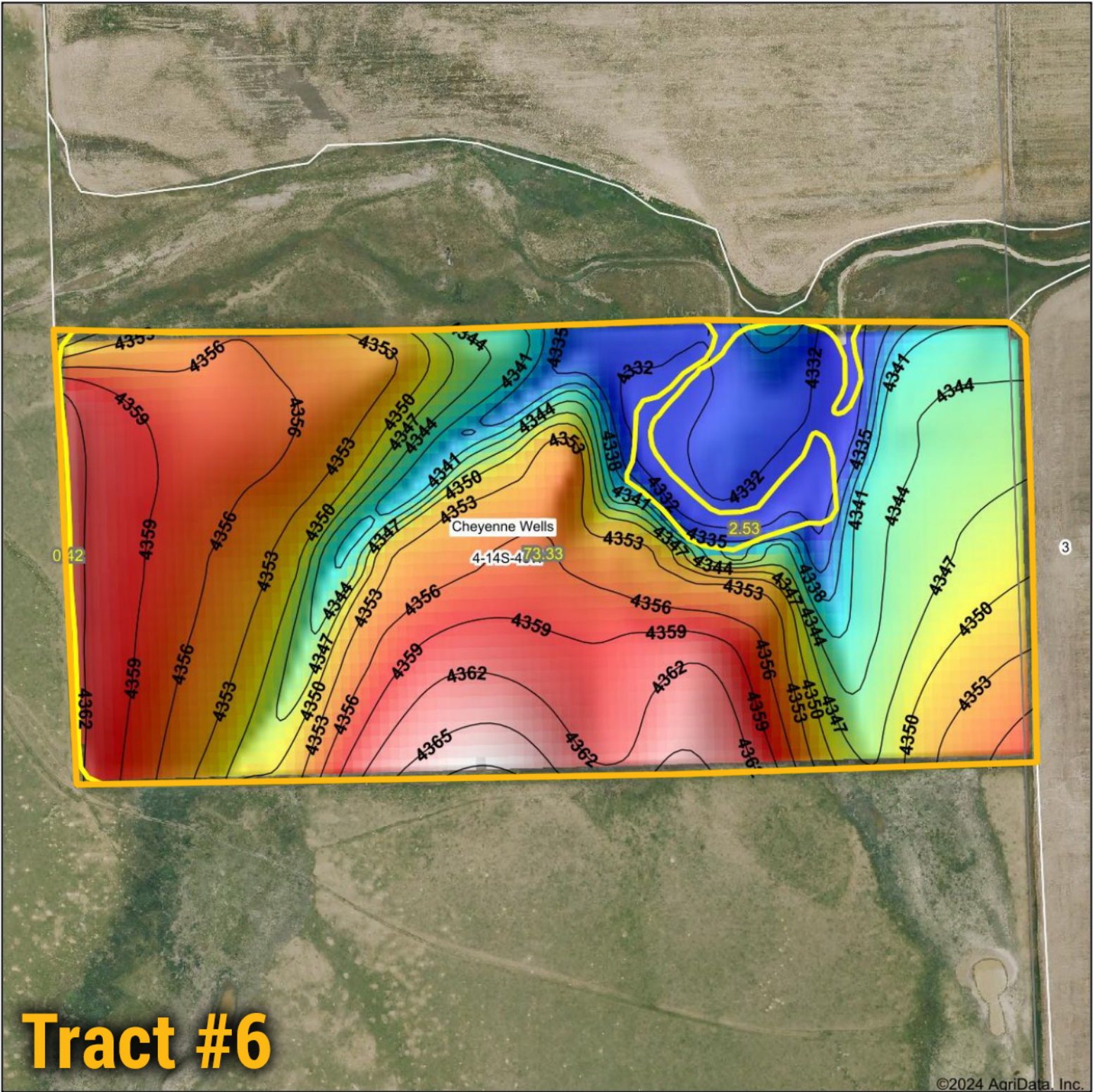
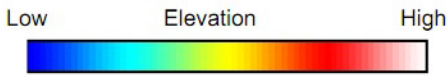


# Topography Hillshade

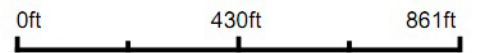


## Tract #6

©2024 AgriData, Inc.



Source: USGS 10 meter dem  
 Interval(ft): 3  
 Min: 4,331.0  
 Max: 4,368.8  
 Range: 37.8  
 Average: 4,350.4  
 Standard Deviation: 9.58 ft



4-14S-45W  
 Cheyenne County  
 Colorado

Boundary Center: 38° 51' 38.99, -102° 26' 57.37

**BigIron**  
 REALTY

Maps Provided By:



© AgriData, Inc. 2023 www.AgriDataInc.com

Field borders provided by Farm Service Agency as of 5/21/2008.