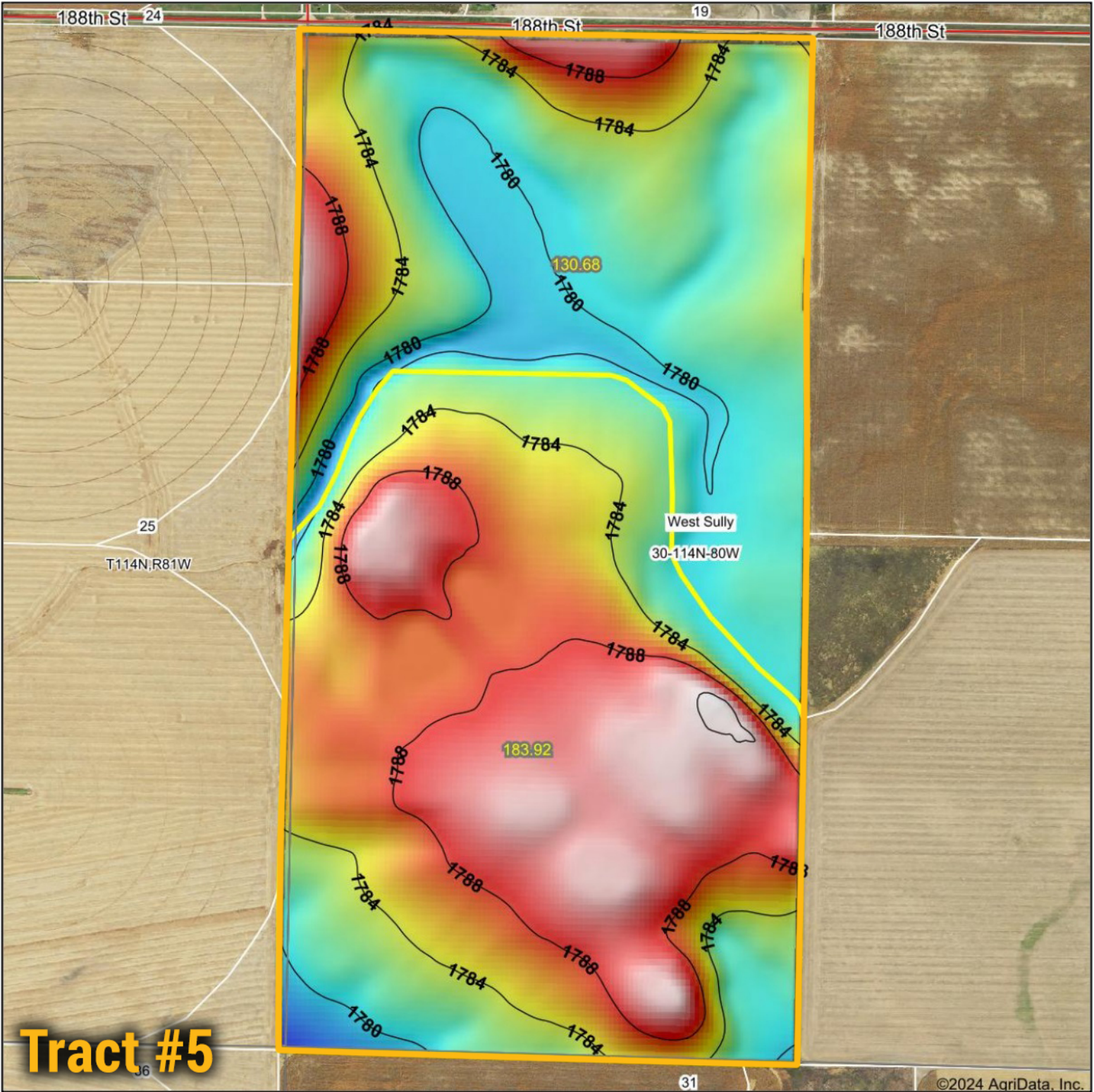


Topography Hillshade



Tract #5

<p>Low Elevation High</p>	<p>Source: USGS 10 meter dem Interval(ft): 4 Min: 1,776.4 Max: 1,792.3 Range: 15.9 Average: 1,784.7 Standard Deviation: 3.67 ft</p>	<p>0ft 792ft 1583ft</p> <p>11/21/2024</p> <p>30-114N-80W Sully County South Dakota</p> <p>Boundary Center: 44° 39' 19.38, -100° 31' 23.1</p>
---------------------------	---	---

BigIron REALTY

Maps Provided By:

surety
 CUSTOMIZED ONLINE MAPPING

© AgriData, Inc. 2023 www.AgrIDataInc.com

Field borders provided by Farm Service Agency as of 5/21/2008.