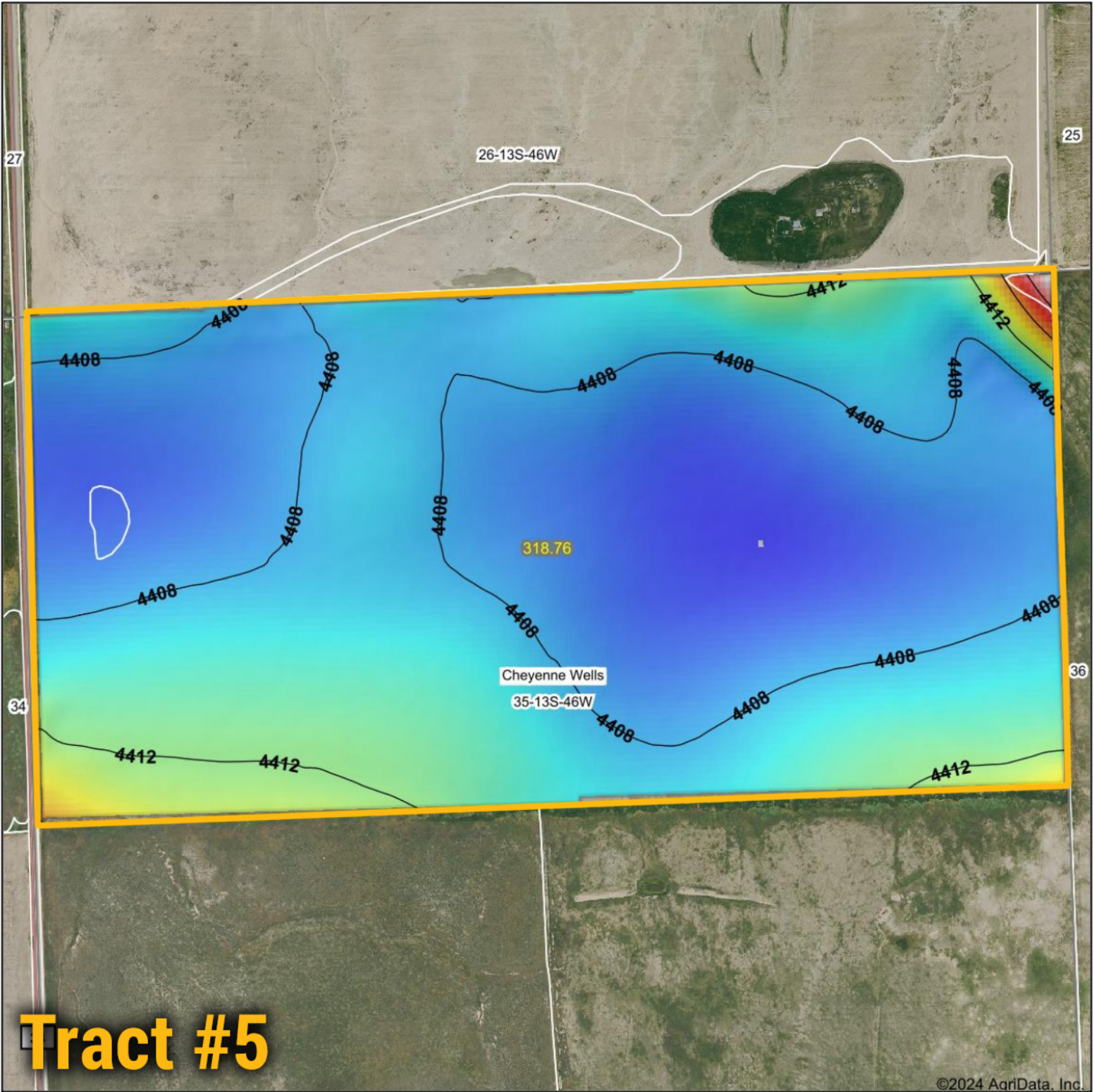
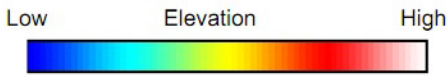


Topography Hillshade

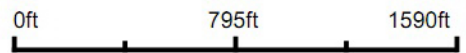


Tract #5

©2024 AgriData, Inc.



Source: USGS 10 meter dem
 Interval(ft): 4
 Min: 4,405.0
 Max: 4,423.4
 Range: 18.4
 Average: 4,408.5
 Standard Deviation: 2.07 ft



BigIron
REALTY

Maps Provided By:



© AgriData, Inc. 2023 www.AgriDataInc.com

Field borders provided by Farm Service Agency as of 5/21/2008.



9/11/2024

35-13S-46W
Cheyenne County
Colorado

Boundary Center: 38° 52' 44.64, -102° 31' 41.56