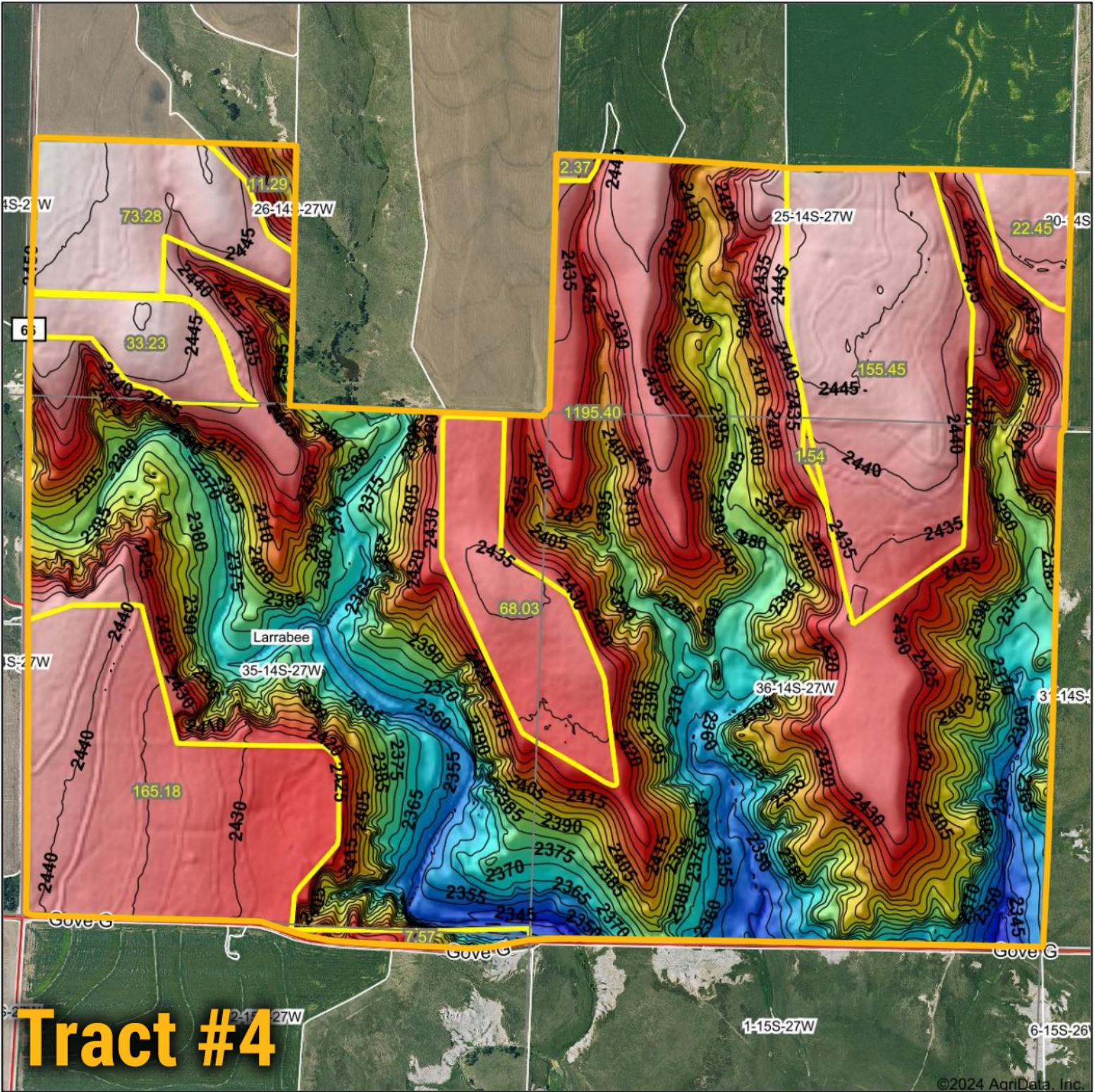


Topography Hillshade



<p>Low Elevation High</p>	<p>Source: USGS 10 meter dem</p> <p>Interval(ft): 5</p> <p>Min: 2,336.3</p> <p>Max: 2,453.7</p> <p>Range: 117.4</p> <p>Average: 2,412.4</p> <p>Standard Deviation: 29.07 ft</p>	<p>0ft 1577ft 3155ft</p> <p>8/29/2024</p> <p>36-14S-27W Gove County Kansas</p> <p>Boundary Center: 38° 47' 45.73, -100° 16' 53.28</p>
---------------------------	---	---

BigIron
REALTY

Maps Provided By:
surety
CUSTOMIZED ONLINE MAPPING

© AgriData, Inc. 2023 www.AgriDataInc.com
Field borders provided by Farm Service Agency as of 5/21/2008.