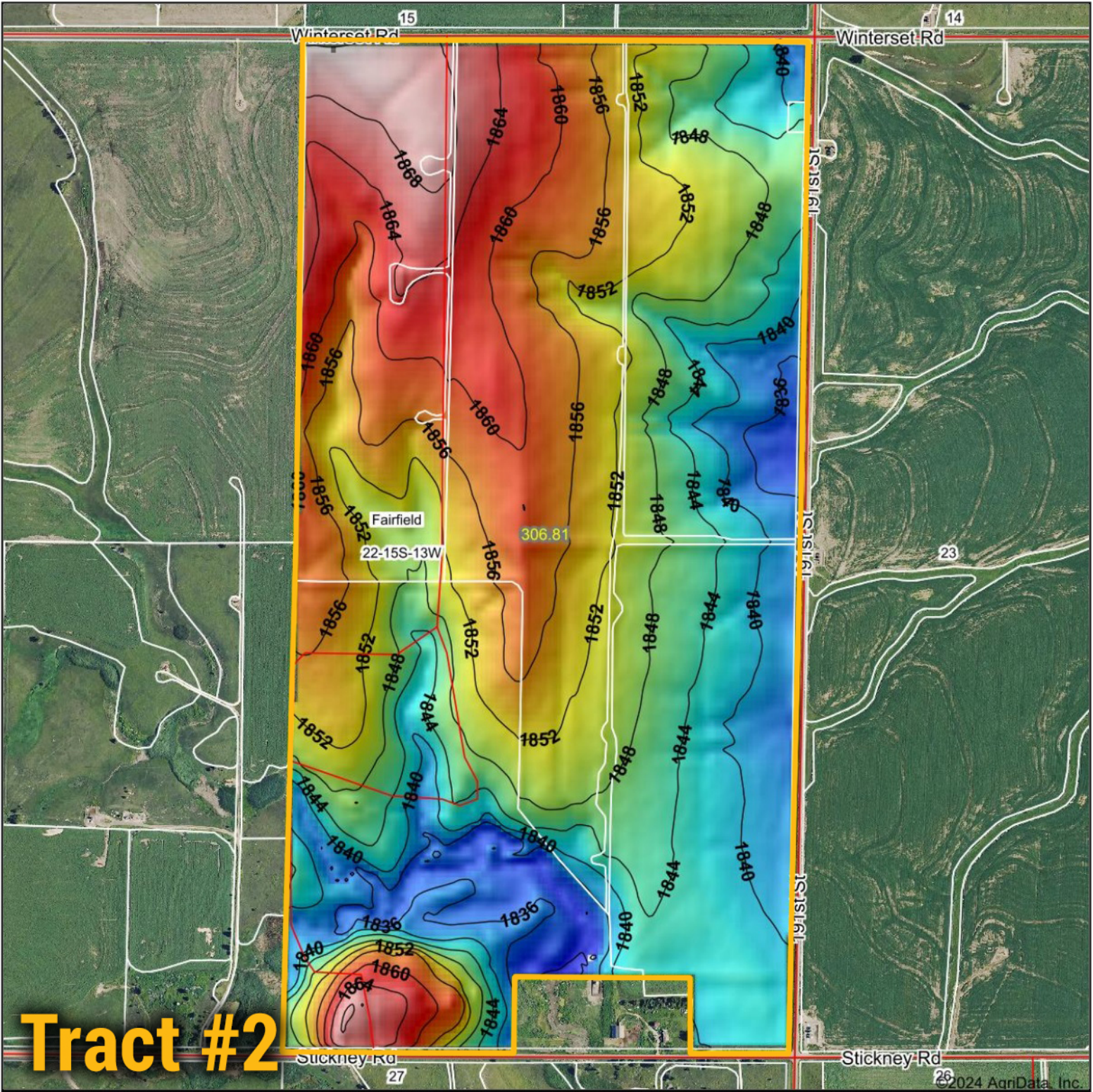
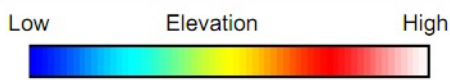


Topography Hillshade



Tract #2



Source: USGS 10 meter dem
 Interval(ft): 4
 Min: 1,831.3
 Max: 1,873.7
 Range: 42.4
 Average: 1,849.9
 Standard Deviation: 9.15 ft



BigIron REALTY
 Maps Provided By:

 CUSTOMIZED ONLINE MAPPING
 © AgriData, Inc. 2023 www.AgridataInc.com



22-15S-13W
Russell County
Kansas

Boundary Center: 38° 43' 59.28, -98° 44' 58.45

Field borders provided by Farm Service Agency as of 5/21/2008.