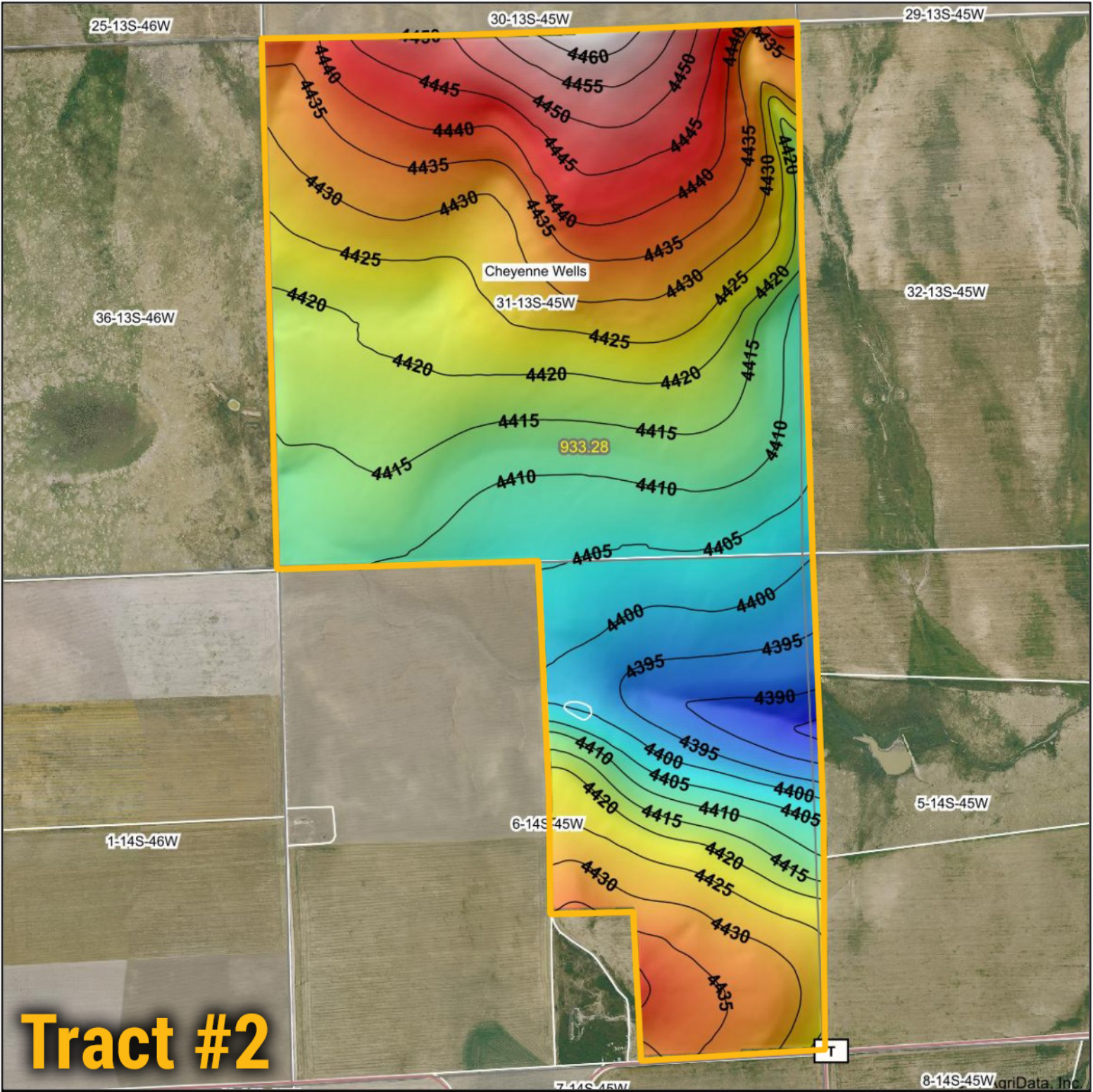
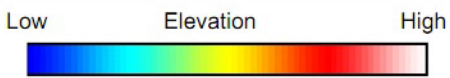


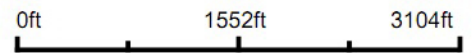
Topography Hillshade



Tract #2



Source: USGS 10 meter dem
 Interval(ft): 5
 Min: 4,383.8
 Max: 4,462.6
 Range: 78.8
 Average: 4,421.5
 Standard Deviation: 15.78 ft



31-13S-45W
 Cheyenne County
 Colorado

Boundary Center: 38° 52' 7.63, -102° 29' 27.5

BigIron
 REALTY

Maps Provided By:



© AgriData, Inc. 2023 www.AgrIDataInc.com

Field borders provided by Farm Service Agency as of 5/21/2008.