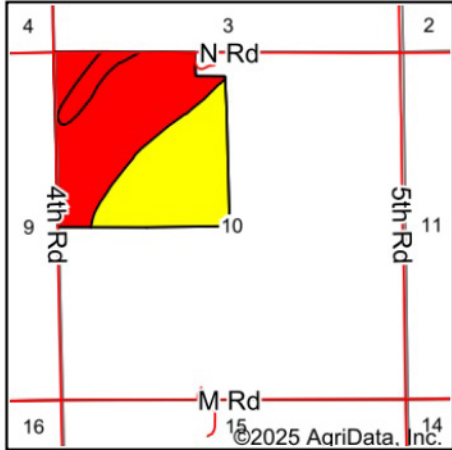
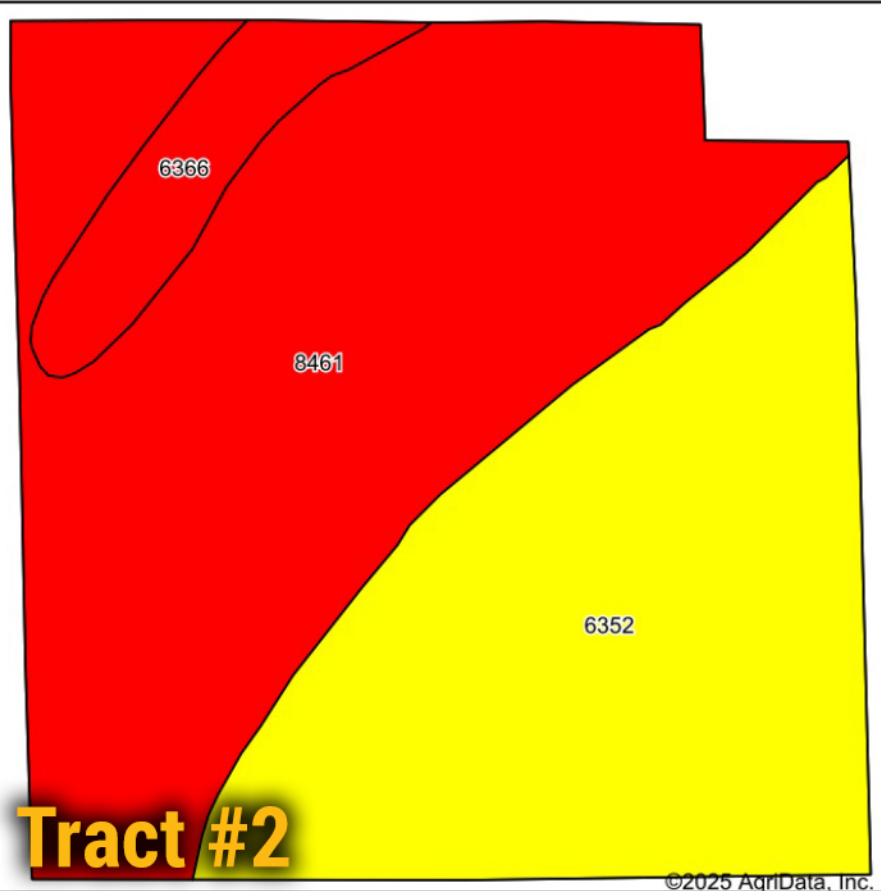


Soils Map



State: **Nebraska**
 County: **Merrick**
 Location: **10-13N-8W**
 Township: **Prairie Creek**
 Acres: **156.68**
 Date: **1/7/2025**

BigIron
 REALTY

Maps Provided By:

 CUSTOMIZED ONLINE MAPPING
 © AgriData, Inc. 2023 www.AgriDataInc.com



Soils data provided by USDA and NRCS.

©2025 AgriData, Inc.

Area Symbol: NE121, Soil Area Version: 24

Code	Soil Description	Acres	Percent of field	SRPG Legend	Non-Irr Class *c	Irr Class *c	SRPG	Corn Bu	Corn Irrigated Bu	Winter wheat Bu	*n NCCPI Soybeans
8461	Gayville variant silt loam, rarely flooded	82.96	52.9%		IVs	IVs	47	35	82	24	43
6352	Leshara silt loam, occasionally flooded	64.48	41.2%		IIw	IIw	65	74	142	34	64
6366	Obert silt loam, occasionally flooded	9.24	5.9%		Vw		48				42
Weighted Average											
					3.24	*-	54.5	49	101.9	26.7	*n 51.6