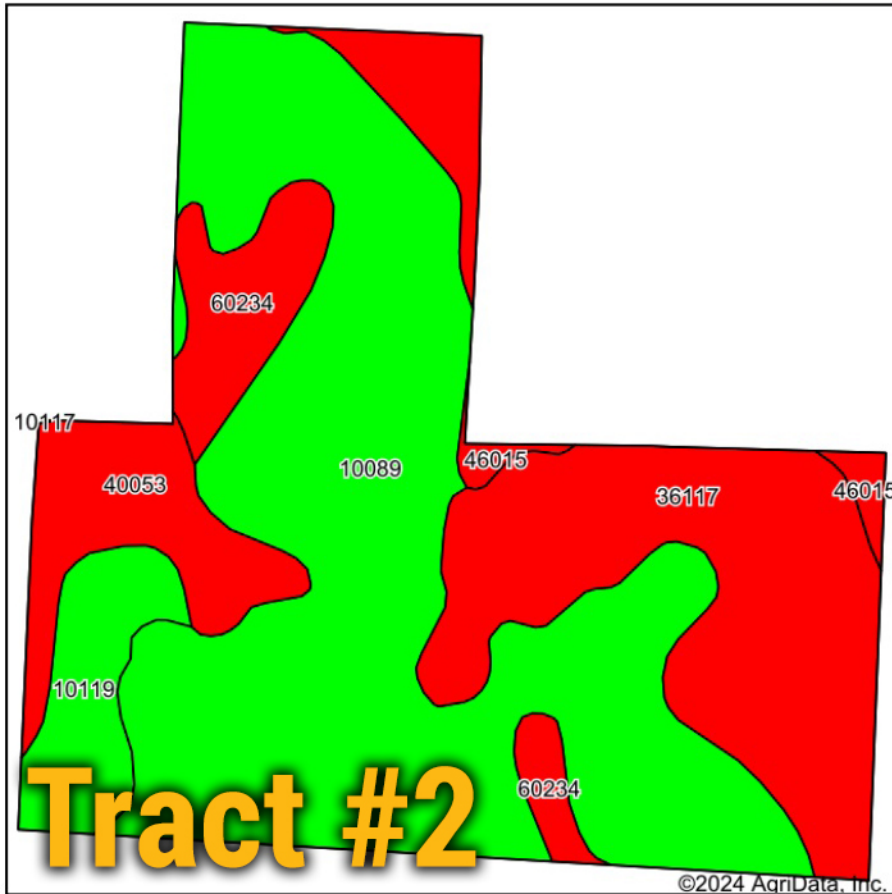
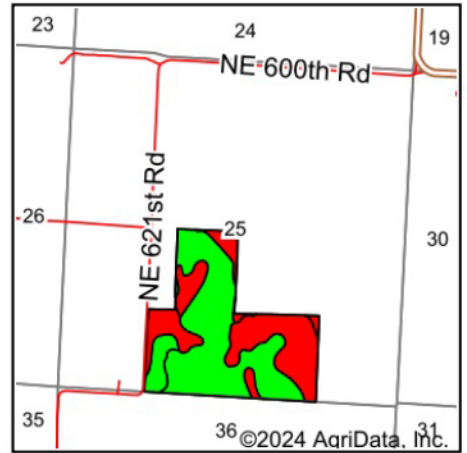


Soils Map



Soils data provided by USDA and NRCS.



State: **Missouri**
 County: **Johnson**
 Location: **25-47N-25W**
 Township: **Montserrat**
 Acres: **110**
 Date: **4/19/2024**

BigIron
 REALTY

Maps Provided By:



©2024 AgriData, Inc.

Area Symbol: MO101, Soil Area Version: 27

Code	Soil Description	Acres	Percent of field	Non-Irr Class Legend	Non-Irr Class *c	*n NCCPI Soybeans
10089	Mandeville silt loam, 5 to 9 percent slopes	59.16	53.8%		IIIe	54
36117	Nodaway silt loam, heavy till, 0 to 2 percent slopes, occasionally flooded	27.84	25.3%		IIw	78
40053	Deepwater silt loam, 2 to 5 percent slopes	8.25	7.5%		IIe	80
60234	Weller silt loam, 2 to 5 percent slopes	7.10	6.5%		IIe	60
10119	Sampsel silty clay loam, 5 to 9 percent slopes, severely eroded	6.31	5.7%		IIIe	44
46015	Lightning silt loam, 0 to 2 percent slopes, occasionally flooded	1.34	1.2%		IIw	62
Weighted Average					2.60	*n 61.9