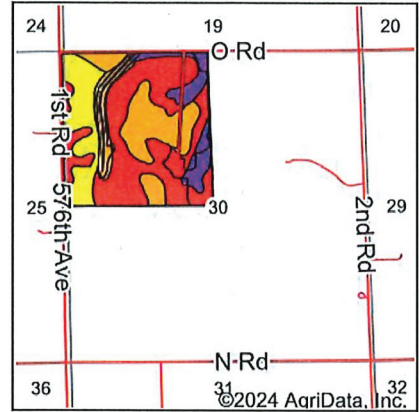
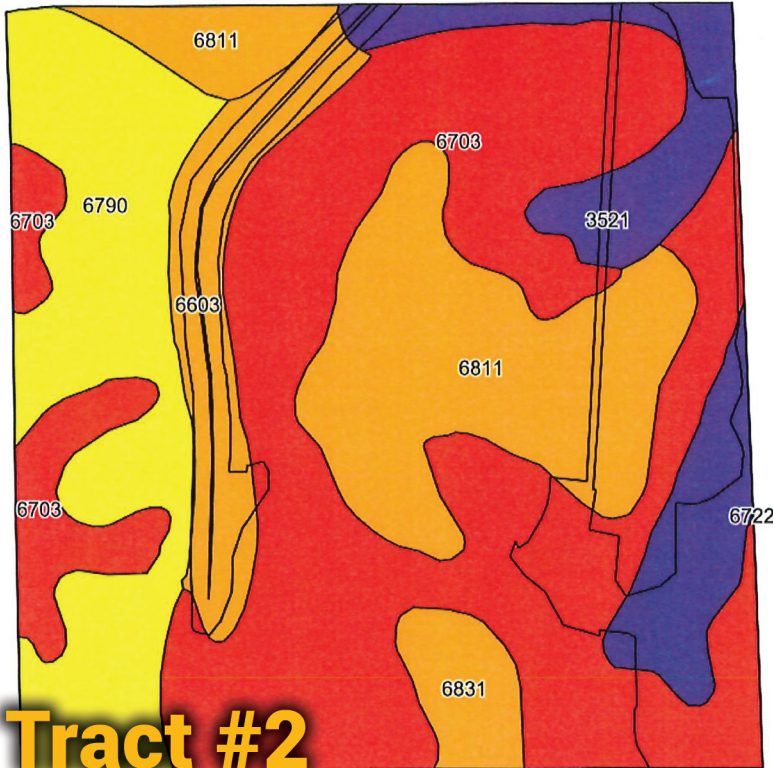


Soils Map



State: **Nebraska**
 County: **Cuming**
 Location: **30-23N-4E**
 Township: **Wisner**
 Acres: **150.72**
 Date: **8/29/2024**

BigIron
 REALTY

Maps Provided By:







 CUSTOMIZED ONLINE MAPPING
 © AgriData, Inc. 2023 www.AgriDataInc.com



Soils data provided by USDA and NRCS.

©2024 AgriData, Inc.

Area Symbol: NE039, Soil Area Version: 23

Code	Soil Description	Acres	Percent of field	SRPG Legend	Non-Irr Class *c	Irr Class *c	SRPG	Corn Bu	Corn Irrigated Bu	Winter wheat Bu	*n NCCPI Soybeans		
6703	Thurman loamy fine sand, 2 to 6 percent slopes	68.16	45.3%		IVe	IVe	32				34		
6811	Moody silty clay loam, 2 to 6 percent slopes	27.05	17.9%		IIe	IIIe	76				74		
6790	Loretto fine sandy loam, 2 to 6 percent slopes	25.90	17.2%		IIIe	IIIe	66	81	156		61		
3521	Cass fine sandy loam, 0 to 2 percent slopes, occasionally flooded	15.49	10.3%		IIw	IIw	55	69	131	1	42		
6603	Alcester silty clay loam, 2 to 6 percent slopes	10.00	6.6%		IIe	IIIe	73				72		
6831	Leisy fine sandy loam, 2 to 6 percent slopes	4.12	2.7%		IIIe	IIIe	75	91			70		
Weighted Average							3.10	3.35	52	23.5	40.3	0.1	*n 50.1