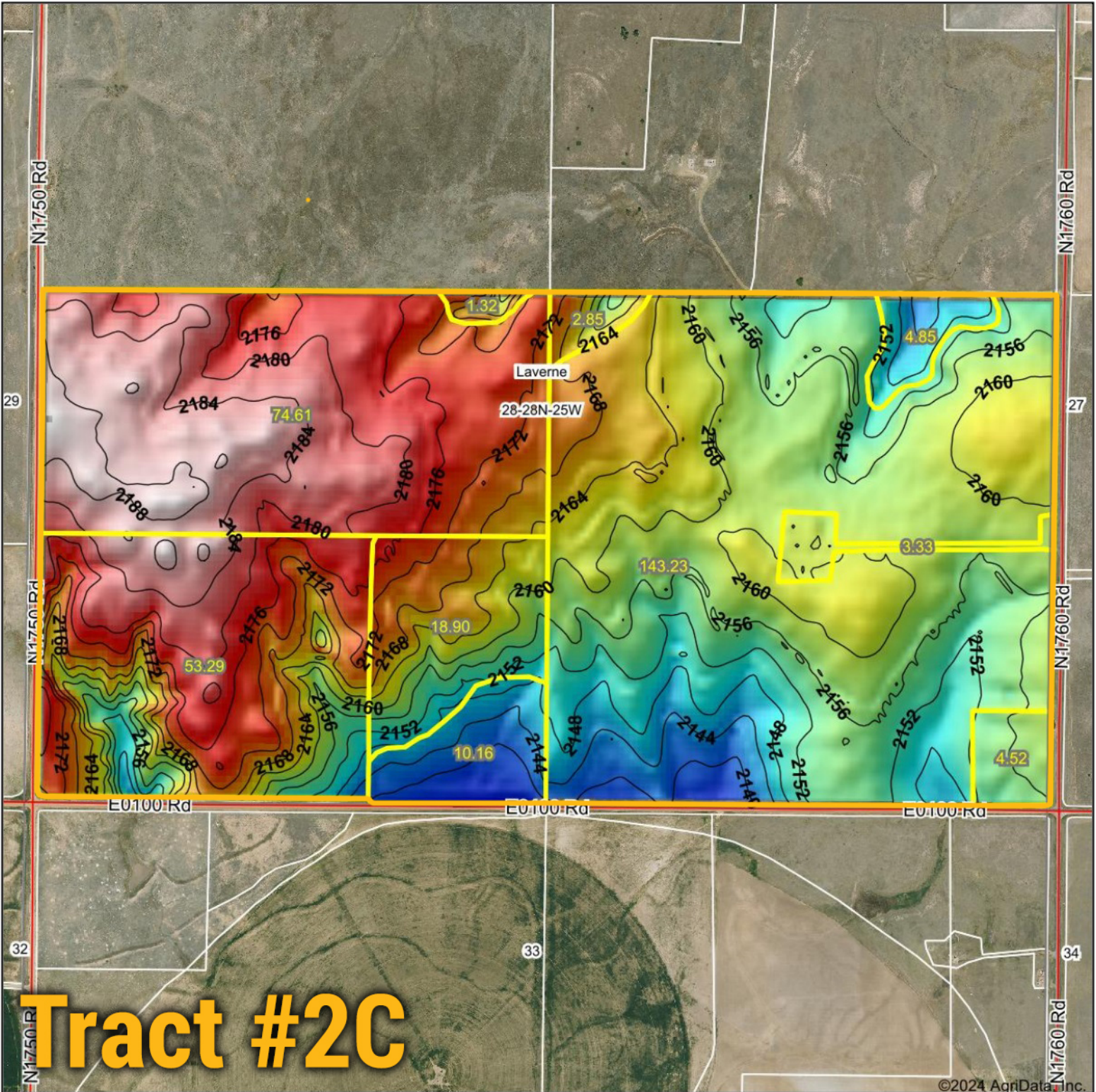
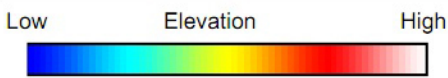


Topography Hillshade

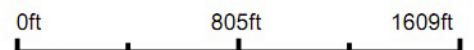


Tract #2C

©2024 AgriData, Inc.



Source: USGS 10 meter dem
 Interval(ft): 4
 Min: 2,134.2
 Max: 2,190.2
 Range: 56.0
 Average: 2,164.0
 Standard Deviation: 13.02 ft



28-28N-25W
 Harper County
 Oklahoma

1/17/2024

Boundary Center: 36° 52' 27.26, -99° 53' 59.41

BigIron
 REALTY

Maps Provided By:



© AgriData, Inc. 2023 www.AgriDataInc.com

Field borders provided by Farm Service Agency as of 5/21/2008.