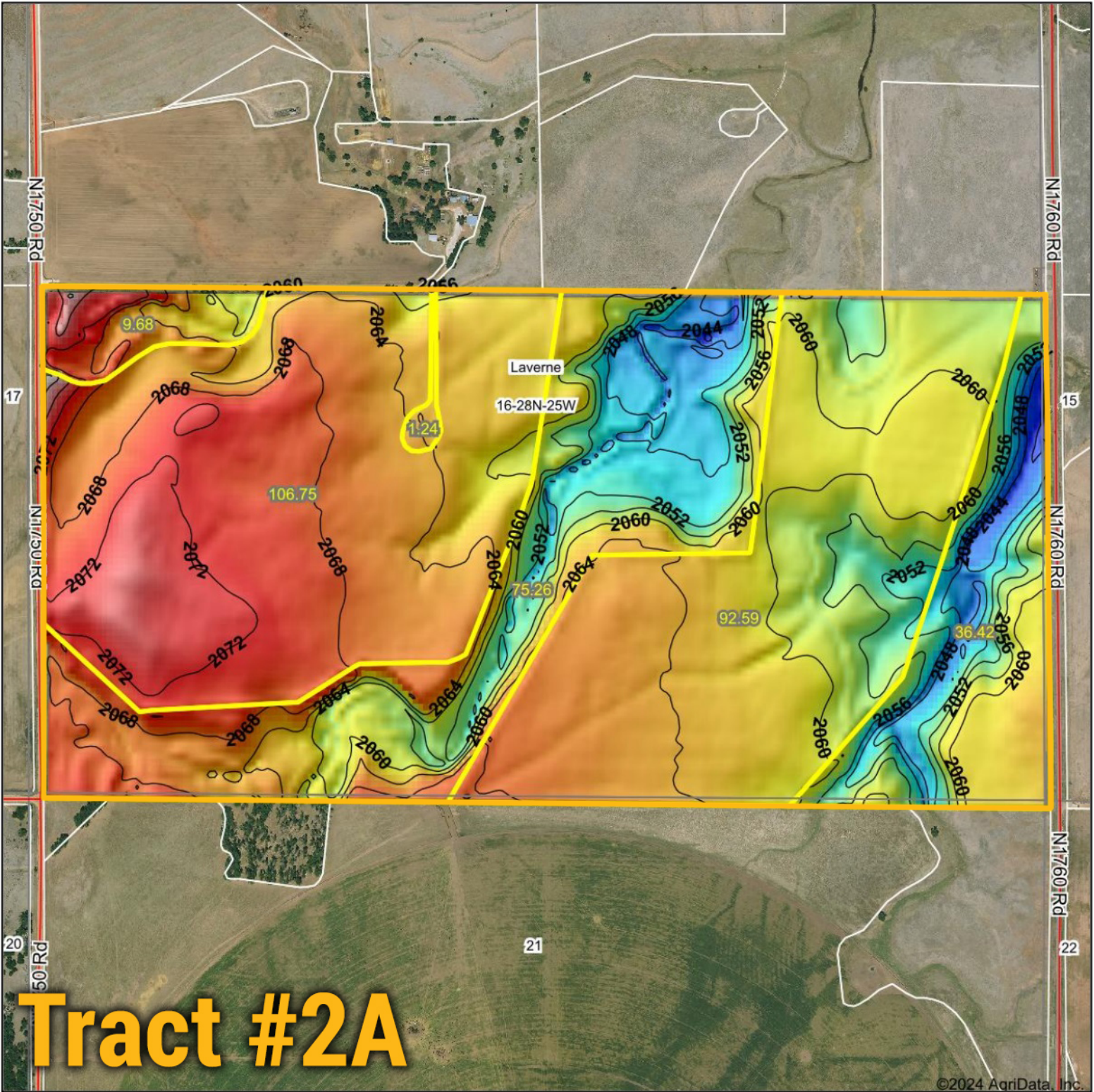
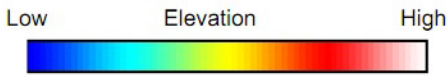


Topography Hillshade

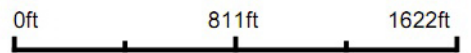


Tract #2A

©2024 AgriData, Inc.



Source: USGS 10 meter dem
 Interval(ft): 4
 Min: 2,038.3
 Max: 2,082.6
 Range: 44.3
 Average: 2,062.0
 Standard Deviation: 7.25 ft



16-28N-25W
 Harper County
 Oklahoma

Boundary Center: 36° 54' 12.77, -99° 53' 59.68

BigIron
 REALTY

Maps Provided By:



© AgriData, Inc. 2023 www.AgriDataInc.com

Field borders provided by Farm Service Agency as of 5/21/2008.