

CF

Cammack Farms

New Date!

Tuesday ♦ 12:30 p.m

Jan. 31, 2023

At the Cammack Farms Headquarters
4 Miles south on Hwy 103 from

DEWITT, NE

17

Virgin 2-Year-Old Angus Bulls

6

Bred Sim-Angus Females

63 years of Performance Testing
Purebred Angus Cattle



CAMMACK FARMS

Angus Cattle

Cattlemen:

Cammack Farms will be hosting their annual production sale Jan. 31, 2023. Selling will be 17 two-year-old Angus. Also selling will be 6 Sim-Angus bred heifers, bred to our new herd sire Coneally Ledger 053, due to start calving Feb, 15, 2022.

We invite you to the headquarters sale day for lunch and to view the cattle. The sale will be hosted by Big Iron Auctions, with bidding online. You will be able to bid in real time at the farm or from your own homes. The sale will be posted online 3 weeks before the sale with pictures and videos.

These cattle are the result of 63 years of performance testing and 50 years of AI breeding to some of the best bulls in the Angus breed.

We strive to produce moderate framed cattle that will produce year after year. These cattle have been selected for low birth weight, moderate milk and good growth. Calves have not been creep feed and are developed on a ration to allow them to express there genetic potential without getting overly fat.

The heifers offered are all the Sim-Angus females we produced in 2021 with nothing held back. All bred to calving ease Angus bulls.

Please feel free to contact Troy or Mike with questions or to come view the sale offering at your convenience. We will be happy to show them to you and talk about our program.

We will make arrangements to deliver bulls within 500 miles after the sale. Heifers are FOB DeWitt.

Troy Cammack
(402) 239-6307

Mike Cammack
(402) 239-9137

George & Willa Cammack
(402) 683-3415

19350 State Hwy 103, DeWitt, Nebraska 68341
Fax (402) 683-6645
Mjcammack@windstream.net
Four miles South of DeWitt on Hwy 103



CAMMACK FARMS

Angus Cattle

Angus Bull Sale

Tuesday ♦ 12:30 p.m.

Jan. 31, 2023

At the Headquarters 4 miles
south of DeWitt, NE on Hwy. 103

Selling:

17 Registered Angus 2-Year-Old Bulls

6 Sim-Angus Bred Females (*Begin calving Feb. 15, 2023*)

HERD HEALTH: All cattle sell with health papers for immediate shipment. All bulls are semen tested, bangs and TB tested. They have had their shots and were poured with Ivomec.

DELIVERY: We will care for the bulls until delivery arrangements are made. Cammack Farms will delivery bulls within 500 miles, and over 500 miles at reasonable rates. Heifers are sold FOB DeWitt.

TERMS AND CONDITIONS: All cattle sell under the Standard Terms and Conditions established by the American Angus Association. A copy of these terms will be available sale day.

SALE FORMAT: New this year the sale will be hosted by Big Iron Auctions.

Cammack Farms will be holding an open house sale day starting at 10 am. Cattle will be available for viewing at the farm. Lunch will be provided and customers will be able to bid at the farm. Sale will start at (12:30) and will take about an hour.

LIVESTOCK REPRESENTATIVES:

Levi Landers, *American Angus Association*, 308.730.1396

EPDS:

EPDs printed in this catalog were current as of Jan.2, 2023.

Cammack Farms

For further information contact:

Troy Cammack
(402) 239-6307

Mike Cammack
(402) 239-9137

Mjcammack@windstream.net



Reference
Sire

Connealy Ledger 053

Calved: 1/22/20 Tattoo: 053 Reg. # 19831072

#QUAKER HILL RAMPAGE 0A36
CONNELY LEGENDARY 644L
JAZZED OF CONANGA 4660

#MCC DAYBREAK
QHF BLACKCAP 6E2 OF 4V16 4355
#MORGANS DIRECTION 111 9901
JAZE OF CONANGA 234

CONNELY CONFIDENCE PLUS
EN LOVELY OF CONANGA 5395
EN LISTA OF CONANGA 91X

#CONNELY CONFIDENCE 0100
ELBANNA OF CONANGA 1209
#CONNELY ALL AROUND
EN LYRA OF CONANGA 3872

BW EPD	WW EPD	YW EPD	Milk EPD	CW EPD	MRB EPD	REA EPD	FT EPD
-2.2	+68	+111	+33	+39	+1.10	+1.17	+0.001

Reference
Sire

CF Emblazon 4017 11013 19121

Calved: 4/6/19 Tattoo: 19121 Reg. # 19739985

MSAR EMBLAZON 2092
MSAR EMBLAZON 2092 - 4017
#MSAR MARSHALL QUEEN 3933

MSAR EMBLAZON 4086
MSAR EVIDENCES EPPIONIA 0014
#SITZ VALUE 7097
MSAR MARSHALL QUEEN 1111

#GAR TRAVELER 1489
CF TRAV 1489 0903 11013
CF CHINNOOK 786 0706 0903

#QAS TRAVELER 23-4
GAR BANDO 237
#GAR CHINNOOK 786
CF TRAV 584 LT 0589 0706

BW EPD	WW EPD	YW EPD	Milk EPD	CW EPD	MRB EPD	REA EPD	FT EPD
-1.6	+38	+69	+32	+18	+0.28	-0.11	+0.055

Reference
Sire

CAR Juneau 643

Calved: 1/20/16 Tattoo: 643 Reg. # 18633475

#KROUPAL JUNEAU 797
LAR JUNEAU 796Y
QUEEN ELBA 763U

#OCC JUNEAU807J
KROUPALS ELBA 187
#LAR ALLIANCE 64L
QUEEN ELBA 525R LAR

CAR JUSTICE 754
CAR MISS MARIE 0149
CAR MISS MARIE 8208

#ER JUSTICE N013
CAR MISS MARIE 556
CAR PRIMETRACKER 512
CAR MISS MARIE 587

BW EPD	WW EPD	YW EPD	Milk EPD	CW EPD	MRB EPD	REA EPD	FT EPD
+3.0	+87	+156	+14	+66	+0.08	-0.40	-0.025



Reference
Sire

KG Justified 3023

Calved: 1/21/13 Tattoo: 3023 Reg. # 17707279

#CONNEALY CONSENSUS 7229
CONNEALY JUDGMENT
#ENTRINE OF CONANGA 9876

#CONNEALY CONSENSUS
BLUE LILLY OF CONAGA 16
#RITO 6EMA OF 4L3 EMBLAZON
#ENTRANCE OF CONANGA 206

#SITZ WISDOM 481T
KG MISS MAGIC 1443
KG MISS MAGIC 3528

#CONNEALY ONWARD
SITZ ELLUNA ELITE 94P
KG TRAVELER 8180 8171
KG MISS MAGIC 6560

BW EPD	WW EPD	YW EPD	Milk EPD	CW EPD	MRB EPD	REA EPD	FT EPD
-2.0	+61	+109	+30	+32	+1.13	+0.30	+0.049

Reference
Sire

CF Basin R Maker 380U 341 15010

Calved: 2/12/15 Tattoo: 15010 Reg. # 18164518

#GDAR RAINMAKER 340
#BASIN RAINMAKER D S 380U
SHADY LADY RACHEL 3233

#LOVANA
#LADY BLACKBIRD 987 GDAR
#CANDOLIER FOREVER 376
RACHEL RITO 813 GDAR

#GDAR GAME DAY 449
CF GAME DAY 449 0713 13041
CF STACKER 0030 0590 07213

#BOYD NEW DAY 8005
#GDAR MISS WIX 474
CH STACKER 0030
CF EXPLOSION V 1495 0039 0590

BW EPD	WW EPD	YW EPD	Milk EPD	CW EPD	MRB EPD	REA EPD	FT EPD
+1.0	+41	+69	+19	+19	+0.58	+0.46	-0.013

Cammack Farms...

Every year, 10 - 15 females are sorted off the bottom and sold as commercials. It lowers our herd ratios but eliminates problems. They are culled on fertility, disposition, raising poor calves and being hard to get along with. The last few years, more were forced out because of drought.

...breeds predictability



Lot 1

LOT 1 **CF Justified 3023 942 21002**
Calved: 2/6/21 Tattoo: 21002 Reg. # 20022147

CONNEALY JUDGMENT
#KG JUSTIFIED 3023
 KG MISS MAGIC 1443

#CONNEALY CONSENSUS 7229
 ENTRINE OF CONANGA 9876
 #SITZ WISDOM 481T
 KG MISS MAGIC 3528

CAR JUNEANU 643
CF JUNEANU 643 16059 19042
 CF CAPITALIST 028 554 16059

LAR JUNEANU 796Y
 #CAR MISS MARIE 0149
 #CONNEALY CAPITALIST 028
 #CF RIDGE 61N 3101 0554

Dam's Prod.	
BWR	2/101
NR	2/99
YWR	1/100

BW EPD	WW EPD	YW EPD	Milk EPD	Actual BW	205 Day Ratio	365 Day Ratio
+0.1	+63	+116	+23	74	100	100

- ♦ Recommended for use on heifers or cows.
- ♦ A smooth shouldered, heifer bull.
- ♦ Dam is a promising, young Juneau daughter.

LOT 2 **CF Justified 3023 19001 21006**
Calved: 2/7/21 Tattoo: 21006 Reg. # 20397848

CONNEALY JUDGMENT
#KG JUSTIFIED 3023
 KG MISS MAGIC 1443

#CONNEALY CONSENSUS 7229
 ENTRINE OF CONANGA 9876
 #SITZ WISDOM 481T
 KG MISS MAGIC 3528

CONNEALY CONCORD
CF CONCORD 427E 17076 19001
 CF CALCULATOR 12013 17076

#CONNEALY CONSENSUS
 #EURA ELGA OF CONANGA 9109
 #HUNTS CALCULATOR 2720
 CF TRAV 0956 1082 12013

Dam's Prod.	
BWR	2/101
NR	2/105
YWR	1/109

BW EPD	WW EPD	YW EPD	Milk EPD	Actual BW	205 Day Ratio	365 Day Ratio
-0.4	+63	+110	+29	76	108	109

- ♦ Recommended for use on heifers or cows
- ♦ Massive made bull with extra thickness and depth.
- ♦ Dam is a picture perfect Concord daughter.



Lot 2



Lot 3

LOT
3

CF Justified 3023 19034 21007

Calved: 2/7/21 Tattoo: 21007 Reg. # 20397945

CONNEALY JUDGMENT
#KG JUSTIFIED 3023
KG MISS MAGIC 1443

#CONNEALY CONSENSUS 7229
ENTRINE OF CONANGA 9876
#SITZ WISDOM 481T
KG MISS MAGIC 3528

CF T MADE 118 12105 17022
CF T MADE 722 17005 19034
CF R MAKER 5055 15037 17005

K N M TAILOR MADE 118
CF MEDICINE MAN 0638 12105
MSAR RAINMAKER 0112 - 5055
CF CAPSTONE 12095 15037

Dam's Prod.	
BWR	2/106
NR	2/108
YWR	1/117

BW EPD	WW EPD	YW EPD	Milk EPD	Actual BW	205 Day Ratio	365 Day Ratio
+0.4	+71	+128	+30	82	113	117

- ♦ Recommended for use on heifers or cows.
- ♦ High ratios on this bull we used as a pasture sire on the heifers.
- ♦ Retaining 1/3 breeding interest, selling full possession.

LOT
4

CF Calc 2720 19003 21011

Calved: 2/9/21 Tattoo: 21011 Reg. # 20401627

G D A R 711 COMPUTER
#HUNTS CALCULATOR 2720
R R 1148 IDA 720A

#G D A R OSCAR 711
G D A R QUEEN CARY 6169
#TRAVELER 1148 G D A R
R R 2100 IDA 5620

CAR JUNEANU 643
CF JUNEANU 643 17060 19003
CF X-PLUS 4XX51 0101 17060

LAR JUNEANU 796Y
#CAR MISS MARIE 0149
SINCLAIR X-PLUS 4XX51
CF JUMBO 61W 0941 11001

Dam's Prod.	
BWR	1/105
NR	1/96
YWR	1/95

BW EPD	WW EPD	YW EPD	Milk EPD	Actual BW	205 Day Ratio	365 Day Ratio
+1.3	+49	+82	+22	82	96	95

- ♦ Recommended for use on heifers or cows.
- ♦ A smaller framed bull with lots of eye appeal.
- ♦ Dam is a nice patterned Juneau daughter.



Lot 4



LOT 5 **CF Basin RM 15010 19116 21013**
Calved: 2/10/21 Tattoo: 21013 Reg. # 20447946

#BASIN RAINMAKER D S 380U
CF BASINR MAKER 380U 341 15010
 CF GAME DAY 449 0713 13041

#G D A R RAINMAKER 340
 SHADY LADY RACHEL 3233
 #GDAR GAME DAY 449
 CF STACKER 0030 0590 0713

CF ET CAPITALIST 811 16109
CF CAPITALIS16109 1026 19116
 CF VICEGRIP 0229 0213 1026

#CONNEALY CAPITALIST 028
 CF TRAV 584LT 0610 0811
 CF VISE GRIP 901 9987 0229
 #CF WYE 8332 0081 0213

Dam's Prod.	
BWR	
NR	
YWR	1/100

BW EPD	WW EPD	YW EPD	Milk EPD	Actual BW	205 Day Ratio	365 Day Ratio
+	+	+	+			100

- ♦ Recommended for use on cows.
- ♦ A stout made bull with good length.
- ♦ Sire is out of the Pathfinder sire Rainmaker 380U.

LOT 6 **CF Justified 3023 17061 21029**
Calved: 3/14/21 Tattoo: 21029 Reg. # 20397944

CONNEALY JUDGMENT
#KG JUSTIFIED 3023
 KG MISS MAGIC 1443

#CONNEALY CONSENSUS 7229
 ENTRINE OF CONANGA 9876
 #SITZ WISDOM 481T
 KG MISS MAGIC 3528

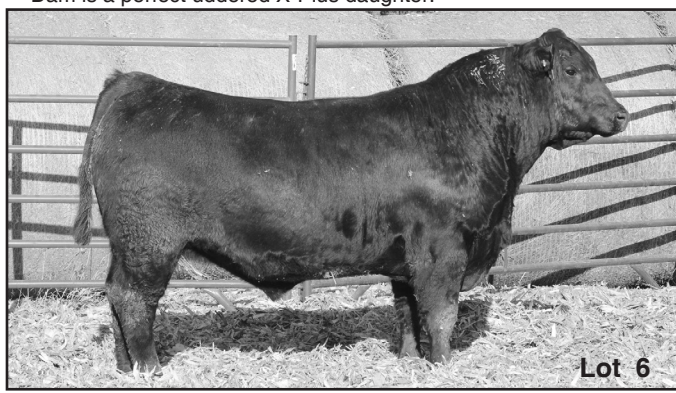
SINCLAIR X-PLUS 4XX51
CF 4XX51 1021 17061
 CF TRAVELER 0884 0872 1021

#SINCLAIR EMULATION XXP
 #SINCLAIR K BTY 9P31 V149
 CF TRAVELER 5204 811 0884
 CF RAINMAKER 5055 0025 0872

Dam's Prod.	
BWR	1/97
NR	4/93
YWR	3/92

BW EPD	WW EPD	YW EPD	Milk EPD	Actual BW	205 Day Ratio	365 Day Ratio
-2.1	+48	+89	+27	74	88	97

- ♦ Recommended for use on heifers or cows.
- ♦ A top notch heifer bull with smooth shoulders and a level top.
- ♦ Dam is a perfect uddered X-Plus daughter.



Lot 6



Lot 7

LOT 7 **CF Concord 19088 18051 21031**
Calved: 3/16/21 Tattoo: 21031 Reg. # 20381530

CONNEALY CONCORD
CF CONCORD 427E 3148 19088
 CF RAINMAKER 5055 0552 13148

#CONNEALY CONSENSUS
 EURA ELGA OF CONANGA 9109
 MSAR RAINMAKER 0112 - 5055
 CF RIDGE 61N 0381 0552

CAR JUNEANU 643
CF JUNEANU 643 15026 18051
 CF CAPSTONE 12065 15026

LAR JUNEANU 796Y
 #CAR MISS MARIE 0149
 K C F BENNETT CAPSTONE
 CF TRAV 1059 0918 12065

Dam's Prod.	
BWR	3/96
NR	3/108
YWR	2/117

BW EPD	WW EPD	YW EPD	Milk EPD	Actual BW	205 Day Ratio	365 Day Ratio
-0.7	+60	+106	+24	70	117	125

- ♦ Recommended for use on heifers or cows.
- ♦ A nice structured bull that moves very sound.
- ♦ Dam is a thick made, smaller framed, Juneau with a bright future.

LOT 8 **CF Justified 3023 12037 21038**
Calved: 3/21/21 Tattoo: 21038 Reg. # 20397952

CONNEALY JUDGMENT
#KG JUSTIFIED 3023
 KG MISS MAGIC 1443

#CONNEALY CONSENSUS 7229
 ENTRINE OF CONANGA 9876
 #SITZ WISDOM 481T
 KG MISS MAGIC 3528

#CONNEALY CONTRAST
CF CONTRAST 0811 12037
 CF TRAV 584LT 0610 0811

#CONNEALY DANNY BOY
 #DORIS OF CONANGA 669
 G D A R TRAVELER 584 L T
 CF EXPLOSION V1495 0415 0610

Dam's Prod.	
BWR	7/109
NR	7/104
YWR	7/106

BW EPD	WW EPD	YW EPD	Milk EPD	Actual BW	205 Day Ratio	365 Day Ratio
-1.0	+59	+106	+27	84	115	108

- ♦ Recommended for use on heifers or cows.
- ♦ Massively made bull with lots of style.
- ♦ Dam is as stout made, consistent producing, Contrast daughter.



Lot 8



Lot 9

LOT 9 **CF Emblazon 19121 19046 21039**
Calved: 3/21/21 Tattoo: 21039 Reg. # 20532165

MSAR EMBLAZON 2092 - 4017
CF EMBLAZON 4017 11013 19121
 CF TRAV 1489 0903 11013

MSAR EMBLAZON 2092
 MSAR MARSHALL QUEEN 3933
 #G A R TRAVELER 1489
 CF CHINNOOK 786 0706 0903

CF T MADE 118 12105 17022
CF T MADE 722 710 19046
 CF R TIME 2041 15152 17010

K N M TAILOR MADE 118
 CF MEDICINE MAN 0638 12105
 MSAR RIGHT TIME 2041
 #CF T MADE 118 0556 15152

Dam's Prod.	
BWR	2/114
NR	2/99
YWR	1/89

BW EPD	WW EPD	YW EPD	Milk EPD	Actual BW	205 Day Ratio	365 Day Ratio
-0.2	+40	+68	+29	82	91	89

- ♦ Recommended for use on heifers or cows.
- ♦ A nice patterned bull that was used as a pasture sire.
- ♦ Dam is a productive young, Tailor Made daughter.

LOT 10 **CF Conquest 4338 16030 21040**
Calved: 3/21/21 Tattoo: 21040 Reg. # 20397893

#CONNEALY CONSENSUS
CONNEALY CONQUEST
 BOKA BAY OF CONANGA 13X

#KMK ALLIANCE 6595 187
 BLINDA OF CONANGA 004
 #KESSLERS FRONTMAN R001
 BOKA BETTE OF CONANGA 9258

K N M TAILOR MADE 118
CF TAILOR MADE 118 156 16030
 CF CHINNIOK 786 0355 11056

ROCKIN HORSE TAILOR MADE 456
 COLE CREEK CHEVADA 250
 #CAR CHINNOOK 786
 CF EXT 4137 9977 0355

Dam's Prod.	
BWR	4/113
NR	3/110
YWR	3/110

BW EPD	WW EPD	YW EPD	Milk EPD	Actual BW	205 Day Ratio	365 Day Ratio
+1.8	+59	+106	+27	100	103	109

- ♦ Recommended for use on cows.
- ♦ A long sided, thick made bull that checks all the boxes.
- ♦ Dam is a nice uddered Tailor Made daughter.



Lot 10



Lot 11

LOT 11 **CF Conquest 4338 15152 21052**
Calved: 4/3/21 Tattoo: 21052 Reg. # 20397894

#CONNEALY CONSENSUS #KMK ALLIANCE 6595 187
 CONNEALY CONQUEST BLINDA OF CONANGA 004
 BOKA BAY OF CONANGA 13X #KESSLERS FRONTMAN R001
 BOKA BETTE OF CONANGA 9258

ROCKIN HORSE TAILOR MADE 456
 COLE CREEK CHEVADA 250
 PLATTEMERE C F COAL TRAIN
 CF CALCULATOR 2720 0068 0215

#CF T MADE 118 0556 15152
 CF COAL TRAIN 0215 0556

Dam's Prod.	
BWR	6/102
NR	6/110
YWR	5/108

BW EPD	WW EPD	YW EPD	Milk EPD	Actual BW	205 Day Ratio	365 Day Ratio
-1.0	+60	+106	+28	88	113	109

- ♦ Recommended for use on heifers or cows.
- ♦ A long sided, square made bull with extra bone and high producing dam.
- ♦ Retaining 1/3 semen interest, selling full possession

LOT 12 **CF Concord 19088 18113 21055**
Calved: 4/5/21 Tattoo: 21055 Reg. # Pending

#CONNEALY CONSENSUS
 EURA ELGA OF CONANGA 9109
 MSAR RAINMAKER 0112 - 5055
 CF RIDGE 61N 0381 0552

#BT RIGHT TIME 24J
 MSAR BLACKBIRD 8468
 #CAR CHINNOOK 786
 #CF RIDGE 61N 0208 0744

CONNEALY CONCORD
 CF CONCORD 427E 3148 19088
 CF RAINMAKER 5055 0552 13148

MSAR RIGHT TIME 2041
 CF R TIME 2041 0906 18113
 CF CHINNOOK 786 0744 0906

Dam's Prod.	
BWR	3/95
NR	3/92
YWR	2/112

BW EPD	WW EPD	YW EPD	Milk EPD	Actual BW	205 Day Ratio	365 Day Ratio
+0.8	+51	+94	+26	70	94	112

- ♦ Recommended for use on cows.
- ♦ Long sided bull that moves well.
- ♦ Dam is a long made, MSAR Right Time 2041 daughter.



Lot 12



Lot 13

LOT 13 **CF Conquest 4338 13148 21062**
Calved: 4/13/21 Tattoo: 21062 Reg. # 20397891

#CONNEALY CONSENSUS
CONNEALY CONQUEST
 BOKA BAY OF CONANGA 13X

#KMK ALLIANCE 6595 187
 BLINDA OF CONANGA 004
 #KESSLERS FRONTMAN R001
 BOKA BETTE OF CONANGA 9258

MSAR RAINMAKER 0112 - 5055
CF RAINMAKER 5055 0552 13148
 CF RIDGE 61N 0381 0552

MSAR RAINMAKER 0112
 MSAR MARSHALL QUEEN 3663
 COLE CREEK RIDGE 61N
 CF 2000 48 480 0381

Dam's Prod.	
BWR	6/105
NR	7/104
YWR	5/107

BW EPD	WW EPD	YW EPD	Milk EPD	Actual BW	205 Day Ratio	365 Day Ratio
+0.9	+55	+103	+26	90	105	110

- ♦ Recommended for use on cows
- ♦ Thick made, deep bodied bull with lots of power.
- ♦ This bull is nervous when handled individually, should be kept with a group.

LOT 14 **CF Juneau 643 17060 21063**
Calved: 4/14/21 Tattoo: 21063 Reg. # 20393066

LAR JUNEANU 796Y
CAR JUNEAU 643
 #CAR MISS MARIE 0149

#KROUPAL JUNEAU 797
 QUEEN ELBA 763U LAR
 CAR JUSTICE 754
 CAR MISS MARIE 8208

SINCLAIR X-PLUS 4XX51
CF X-PLUS 4XX51 0101 17060
 CF JUMBO 61W 0941 11001

#SINCLAIR EMULATION XXP
 #SINCLAIR K BTY 9P31 V149
 COLE CREEK CEDAR JUMBO 61W
 CF EMULOUS 4003 3112 0941

Dam's Prod.	
BWR	2/101
NR	2/105
YWR	2/110

BW EPD	WW EPD	YW EPD	Milk EPD	Actual BW	205 Day Ratio	365 Day Ratio
+1.7	+57	+104	+20	90	96	102

- ♦ Recommended for use on cows.
- ♦ Extra depth and capacity on this Juneau son.
- ♦ Dam traces back to the Pathfinder sire, EXT.



Lot 14



Lot 15

**LOT
15**

CF Juneau 643 15054 21077

Calved: 4/18/21 Tattoo: 21077 Reg. # 20381541

LAR JUNEANU 796Y
CAR JUNEAU 643
#CAR MISS MARIE 0149

#KROUPAL JUNEAU 797
QUEEN ELBA 763U LAR
CAR JUSTICE 754
CAR MISS MARIE 8208

#WULFFS EXT 6106
CF ET EXT 6106 480 15054
CF CALCULATOR 2720 842 0480

#N BAR EMULATION EXT
WULFFS ERICA DIANNA C116
#HUNTS CALCULATOR 2720
#CF HUSKER 114 171 842

Dam's Prod.	
BWR	6/100
NR	6/100
YWR	5/104

BW EPD	WW EPD	YW EPD	Milk EPD	Actual BW	205 Day Ratio	365 Day Ratio
+1.1	+63	+117	+21	84	105	110

- ♦ Recommended for use on cows.
- ♦ Stout made bull with good length.
- ♦ Dam is a high producing Wulffs EXT daughter.

**LOT
16**

CF Juneau 19047 17103 21100

Calved: 4/30/21 Tattoo: 21100 Reg. # 20381547

CAR JUNEAU 643
CF JUNEAU 643 14107 19047
CF T MADE 118 0686 14107

LAR JUNEANU 796Y
CAR MISS MARIE 0149
K N M TAILOR MADE 118
CF VISE GRIP 901 8120 0686

MSAR RIGHT TIME 2041
CF R TIME 2041 13031 17103
CF JUMBO 61W 0727 11031

#BT RIGHT TIME 24J
MSAR BLACKBIRD 8468
COLE CREEK CEDAR JUMBO 61W
CF EXPLOSION 0516 0445 0727

Dam's Prod.	
BWR	3/103
NR	3/98
YWR	2/96

BW EPD	WW EPD	YW EPD	Milk EPD	Actual BW	205 Day Ratio	365 Day Ratio
+2.8	+54	+96	+26	94	102	101

- ♦ Recommended for use on cows.
- ♦ Smooth shouldered, long made bull.
- ♦ Dam is a larger framed, productive MSAR Right Time 2041 daughter.



Lot 16



Lot 17

LOT 17 **CF Juneau 19047 14012 21125**
Calved: 5/18/21 Tattoo: 21125 Reg. # 20381551

CAR JUNEAU 643
CF JUNEAU 643 14107 19047
 CF T MADE 118 0686 14107

LAR JUNEANU 796Y
 CAR MISS MARIE 0149
 K N M TAILOR MADE 118
 CF VISE GRIP 901 8120 0686

CF CONTRAST 590 12033
CF CONTRAST 233 12023 14012
 CF CHINOOK 786 0779 12023

#CONNEALY CONTRAST
 CF EXPLOSION V1495 0039 0590
 #CAR CHINOOK 786
 #CF WALK ON 0542 0226 0779

Dam's Prod.	
BWR	5/105
NR	5/107
YWR	5/106

BW EPD	WW EPD	YW EPD	Milk EPD	Actual BW	205 Day Ratio	365 Day Ratio
+4.2	+60	+112	+26	95	100	100

- ♦ Recommended for use on cows.
- ♦ A long made bull that should produce good replacements.
- ♦ Dam is a high quality, Contrast granddaughter with a calm disposition.



Lots 18 - 23 are 1/2 Angus x 1/2 Simmental bred females. They are all Black, all Polled and bred to low birth weight Angus bulls. The Pasture Exposure bulls are Connealy Ledger and CF Justified 3023 19034 21007 (Lot 3).



Lot 18

LOT 18 **CFSA Ms Executive Order 147J**
Calved: 3/30/21 Tattoo: 210147 Reg. # 4153396

W/C EXECUTIVE ORDER 8543B
W/C EXECUTIVE ORDER 173E
 W/C MISS WERNING A343

W/C UNITED 956Y
 MISS WERNING KP 8543
 YARDLEY UTAH Y361
 MISS WERNING 534B

CF RAINMAKER 5055 7119 0919
ANGUS COW 124
 ANGUS COW 814

MSAR RAINMAKER 0112-5055
 CF EXPLOSION 0516 0480 7119
 #HUNTS CALCULATOR 2720
 ANGUS COW 603

Dam's Prod.	
BWR	9/98
NR	9/97
YWR	6/100

BW	WW	YW	Milk	API	TI	Actual	205 Day	365 Day
EPD	EPD	EPD	EPD	EPD	EPD	BW	Ratio	Ratio
-1.3	62.0	94.1	25.1	100.8	64.9	86	101	100

- ♦ AI'd May 9, 2022 to Connealy Ledger 053. PE from May 14 to June 3, 2022 to Ledger 053. PE from June 3 to Aug. 1, 2022 to CF Justified 3023 19034 21007 (Lot 3).

LOT 19 **CFSA Ms Executive Order 178J**
Calved: 4/18/21 Tattoo: 210178 Reg. # 4153397

W/C EXECUTIVE ORDER 8543B
W/C EXECUTIVE ORDER 173E
 W/C MISS WERNING A343

W/C UNITED 956Y
 MISS WERNING KP 8543
 YARDLEY UTAH Y361
 MISS WERNING 534B

CF CARHART 118 087 13049
CF CARHART 349 12028 15032
 CF F JUANADA 106V 0703 12028

K N M TAILOR MADE 118
 CF RAINMAKER 5055 0678 1087
 COLE CREEK FULL JUANADA 106V
 CF TRAV 584 LT 0577 0703

Dam's Prod.	
BWR	6/115
NR	6/101
YWR	4/107

BW	WW	YW	Milk	API	TI	Actual	205 Day	365 Day
EPD	EPD	EPD	EPD	EPD	EPD	BW	Ratio	Ratio
-0.1	63.5	95.3	21.3	104.2	64.8	96	106	108

- ♦ AI'd May 9, 2022 to Connealy Ledger 053. PE from May 14 to June 3, 2022 to Ledger 053. PE from June 3 to Aug. 1, 2022 to CF Justified 3023 19034 21007 (Lot 3).



Lot 19



Lot 20

**LOT
20**

CFSA Ms Executive Order 184J

Calved: 4/21/20 Tattoo: 210184 Reg. # 4153398

W/C EXECUTIVE ORDER 8543B
W/C EXECUTIVE ORDER 173E
W/C MISS WERNING A343

W/C UNITED 956Y
MISS WERNING KP 8543
YARDLEY UTAH Y361
MISS WERNING 534B

CH QUANTUM 6247 304 0955
CF QUANTUM 0955 0918 11020
CFMEDICINE MAN 640 0738 0918

#C H QUANTUM 6247
CF AMBUSH 20Y 0144 0304
CAR MEDICINE MAN 640
CF EMULOUS 4009 0587 0738

Dam's Prod.	
BWR	7/102
NR	8/109
YWR	4/107

BW	WW	YW	Milk	API	TI	Actual	205 Day	365 Day
EPD	EPD	EPD	EPD	EPD	EPD	BW	Ratio	Ratio
-1.5	52.5	71.7	26.7	107.8	62.3	92	108	104

- ♦ AI'd May 9, 2022 to Connealy Ledger 053. PE from May 14 to June 3, 2022 to Ledger 053. PE from June 3 to Aug. 1, 2022 to CF Justified 3023 19034 21007 (Lot 3).

**LOT
21**

CFSA Ms Executive Order 194J

Calved: 4/27/20 Tattoo: 210194 Reg. # 4153399

W/C EXECUTIVE ORDER 8543B
W/C EXECUTIVE ORDER 173E
W/C MISS WERNING A343

W/C UNITED 956Y
MISS WERNING KP 8543
YARDLEY UTAH Y361
MISS WERNING 534B

DARS WALK ON 4 TRASVELER 584
CF DARS TRAV 584 0978 16065
CF GURU 0620 0678 0978

GDAR TRAVELER 584 L T
SITZ BARBARA PERFECTION 4368
CF GURU 4 BUTTES 0025 0620
CF CSALCULATOR 2720 1117 0678

Dam's Prod.	
BWR	5/103
NR	5/109
YWR	4/107

BW	WW	YW	Milk	API	TI	Actual	205 Day	365 Day
EPD	EPD	EPD	EPD	EPD	EPD	BW	Ratio	Ratio
-1.1	64.8	94.3	23.7	112.7	68.6	88	111	108

- ♦ AI'd May 9, 2022 to Connealy Ledger 053. PE from May 14 to June 3, 2022 to Ledger 053. PE from June 3 to Aug. 1, 2022 to CF Justified 3023 19034 21007 (Lot 3).



Lot 21



Lot 22

LOT 22 **CFSA Ms Executive Order 1115J**
Calved: 5/8/21 Tattoo: 211115 Reg. # 4153400

W/C EXECUTIVE ORDER 8543B
W/C EXECUTIVE ORDER 173E
 W/C MISS WERNING A343

W/C UNITED 956Y
 MISS WERNING KP 8543
 YARDLEY UTAH Y361
 MISS WERNING 534B

COLE CREEK JUANADA LAD 810
CF JUANADAL 810 0590 15034
 CF EXPLOSION V1495 0039 0590

COLE CREEK JUANADA LAD 81T
 #M A R NELLIE 1044
 N BAR EXPLOSION V1495
 CF PRIME TIME 822 9771 0039

Dam's Prod.	
BWR	4/100
NR	4/107
YWR	2/97

BW	WW	YW	Milk	API	TI	Actual	205 Day	365 Day
EPD	EPD	EPD	EPD	EPD	EPD	BW	Ratio	Ratio
-1.5	55.4	74.9	24.3	103.0	62.3	84	116	95

- AI'd May 9, 2022 to Connealy Ledger 053. PE from May 14 to June 3, 2022 to Ledger 053. PE from June 3 to Aug. 1, 2022 to CF Justified 3023 19034 21007 (Lot 3).

LOT 23 **CFSA Ms Executive Order 1119J**
Calved: 8/11/21 Tattoo: 211119 Reg. # 4153401

W/C EXECUTIVE ORDER 8543B
W/C EXECUTIVE ORDER 173E
 W/C MISS WERNING A343

W/C UNITED 956Y
 MISS WERNING KP 8543
 YARDLEY UTAH Y361
 MISS WERNING 534B

K N M TAILOR MADE 118
CF T MADE 118 0686 14107
 CF VISE GRIP 901 8120 0686

ROCKIN HORSE TAILOR MADE 456
 COLE CREEK CHEVADA 250
 GODLEY CF VISEGRIP 901
 #CF NORTH EXPO 625 470 8120

Dam's Prod.	
BWR	6/103
NR	6/99
YWR	4/99

BW	WW	YW	Milk	API	TI	Actual	205 Day	365 Day
EPD	EPD	EPD	EPD	EPD	EPD	BW	Ratio	Ratio
-2.4	61.0	90.3	24.7	108.1	67.1	78	111	112

- AI'd May 9, 2022 to Connealy Ledger 053. PE from May 14 to June 3, 2022 to Ledger 053. PE from June 3 to Aug. 1, 2022 to CF Justified 3023 19034 21007 (Lot 3).



Lot 23

BigIron AUCTIONS

Cattle Enthusiasts:

Cammack Farms is pleased to announce their Annual Production Sale will be hosted on BigIron Livestock Auctions. We have chosen this platform for many of the following reasons;

- ◆ Easy-to-use platform allows you to review all bulls from one seamless dropdown
- ◆ Add bulls to your watchlist that you want to keep an eye on
- ◆ Bid on multiple lots up to 21 days prior to when the auction closes
- ◆ Auction extends for two minutes after each bid on the final day, ensuring everyone has a chance to place their bids
- ◆ Customer support is available if you have any questions at 800-937-3558

To learn more on how to setup a BigIron account and bid, go to www.bigironbuzz.com/getting-started/

Go to www.bigiron.com/Register to register to bid.

All bids will need to be placed on Big Iron. **Cammack Farms will assist you at the farm with placing bids.** We will be watching the sale as we provide lunch. Registering with Big Iron before the sale would be helpful, but we will make sure you can bid from the farm during the sale.

The bull sale will open for bids on Jan. 10, 2023 and closes on Tuesday, Jan. 31, 2023. Feel free to contact our BigIron rep, Pat Kroese with questions regarding the cattle or the sale process at 402/741-2452.

~Notes~

CUB CREEK HUNTING

PHEASANT AND DEER HUNTING
GUIDED AND NONGUIDED HUNTS

TROY CAMMACK
24256 SW 142 RD.
BEATRICE, NE 68310

Phone: 402/228-0660

www.cubcreekhunting.com

CAMMACK FARMS
George, Troy & Mike Cammack
19350 State Highway 103
DeWitt, NE 68341

Return Service Requested



*Annual Angus Bull & Female Sale
Jan. 31, 2023 ♦ At the Headquarters south of DeWitt, NE*