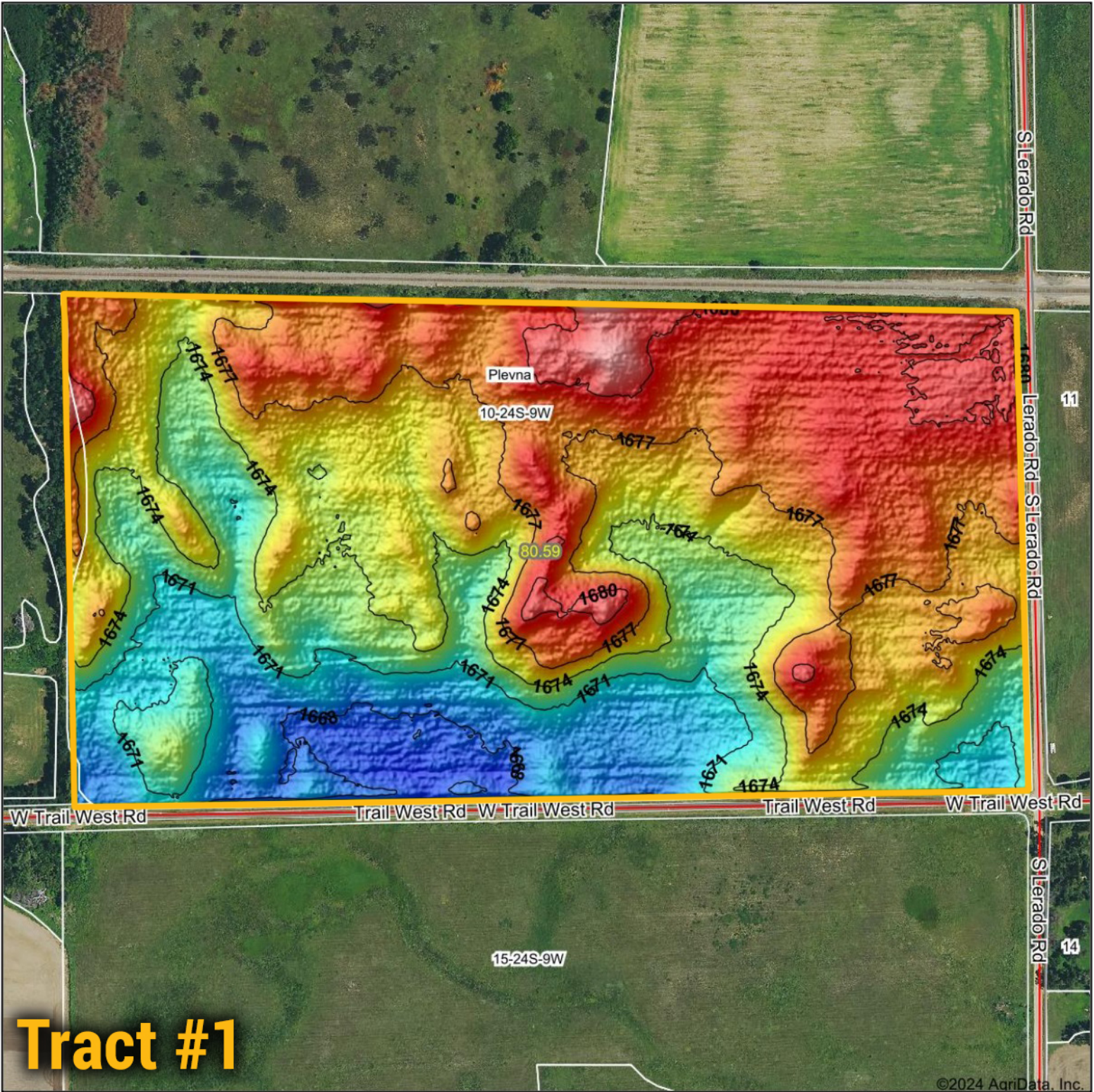
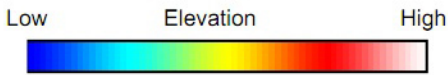


# Topography Hillshade

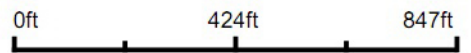


## Tract #1

©2024 AgriData, Inc.



Source: USGS 1 meter dem  
 Interval(ft): 3  
 Min: 1,666.4  
 Max: 1,683.9  
 Range: 17.5  
 Average: 1,675.0  
 Standard Deviation: 3.64 ft



10-24S-9W  
 Reno County  
 Kansas

Boundary Center: 37° 58' 19.29, -98° 17' 35.96

**BigIron**  
 REALTY

Maps Provided By:



© AgriData, Inc. 2023 www.AgriDataInc.com

Field borders provided by Farm Service Agency as of 5/21/2008.