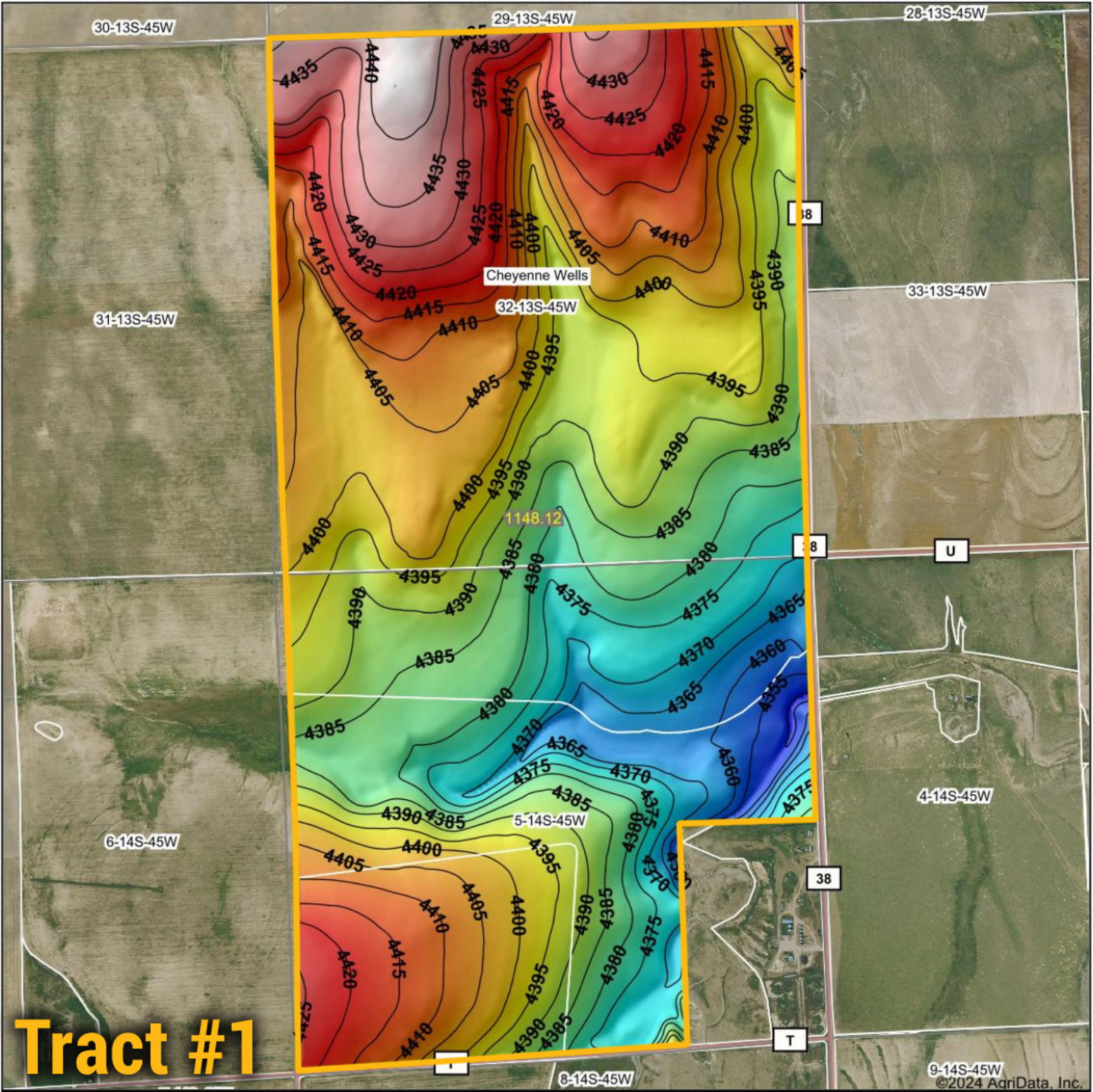
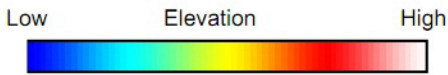


Topography Hillshade



Tract #1



BigIron
REALTY

Maps Provided By:



© AgriData, Inc. 2023 www.AgriDataInc.com

Source: USGS 10 meter dem

Interval(ft): 5

Min: 4,347.6

Max: 4,444.7

Range: 97.1

Average: 4,397.0

Standard Deviation: 19.91 ft



9/11/2024

32-13S-45W
Cheyenne County
Colorado

Boundary Center: 38° 52' 8.1, -102° 28' 20.93

Field borders provided by Farm Service Agency as of 5/21/2008.