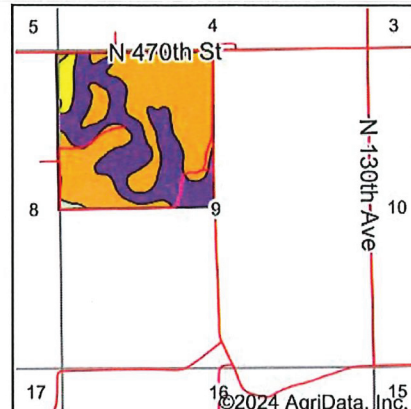
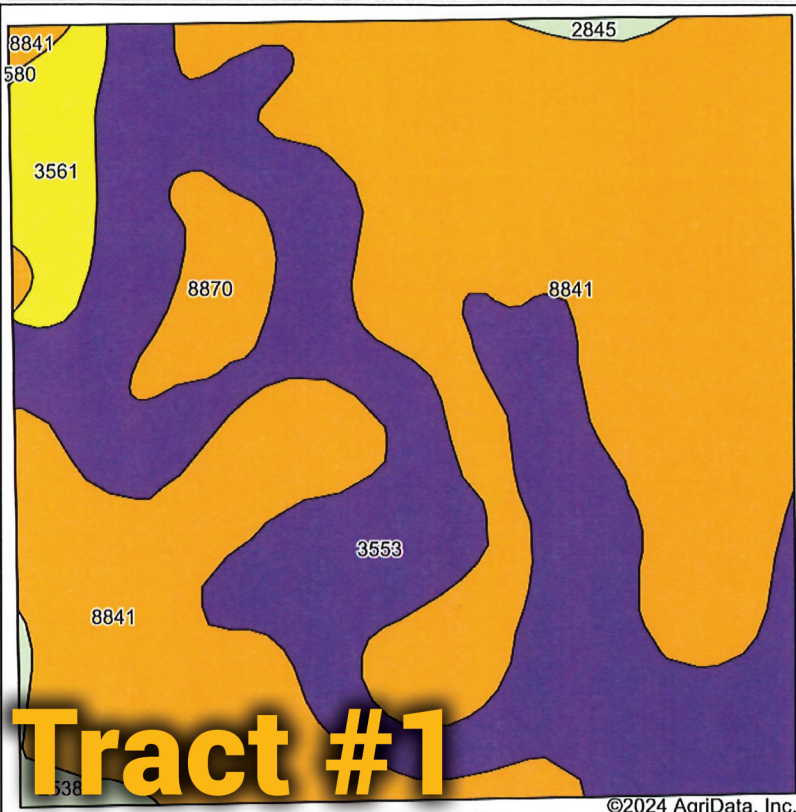


Soils Map



State: **Nebraska**
 County: **Nance**
 Location: **9-17N-8W**
 Township: **South Branch**
 Acres: **155.08**
 Date: **6/20/2024**

BigIron
 REALTY

Maps Provided By:



© AgriData, Inc. 2023







www.AgriDataInc.com



Soils data provided by USDA and NRCS.

©2024 AgriData, Inc.

Area Symbol: NE125, Soil Area Version: 21

| Code | Soil Description | Acres | Percent of field | SRPG Legend | Non-Irr Class *c | Irr Class *c | SRPG | Corn Irrigated Bu | Winter wheat Bu | *n NCCPI Soybeans |
|-------------------------|--|-------|------------------|---|------------------|--------------|-------------|-------------------|-----------------|-------------------|
| 8841 | Hall silt loam, 1 to 3 percent slopes | 86.55 | 55.7% |  | Ile | Ile | 74 | 113 | 35 | 73 |
| 3553 | Hobbs silt loam, 0 to 2 percent slopes, frequently flooded, cool | 55.77 | 36.0% |  | Vlw | | 54 | | | 54 |
| 3561 | Hobbs silt loam, 0 to 2 percent slopes, occasionally flooded, cool | 5.76 | 3.7% |  | Ilw | Ilw | 69 | | | 78 |
| 8870 | Hord silt loam, 1 to 3 percent slopes | 4.94 | 3.2% |  | Ile | Ile | 74 | | | 72 |
| 2538 | Coly silt loam, 6 to 11 percent slopes, eroded | 1.36 | 0.9% |  | IVe | IVe | | | | 59 |
| 2845 | Uly-Coly silt loams, 11 to 17 percent slopes, eroded | 0.70 | 0.5% |  | Vle | | | | | 58 |
| Weighted Average | | | | | 3.47 | *- | 65.6 | 63.1 | 19.5 | *n 66.1 |