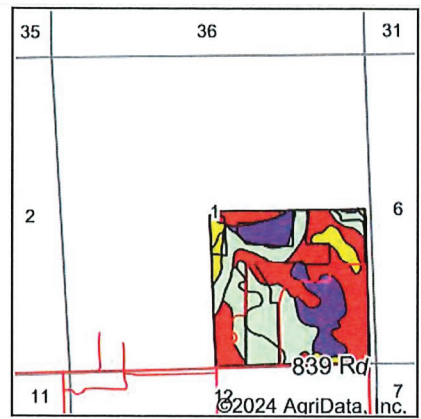
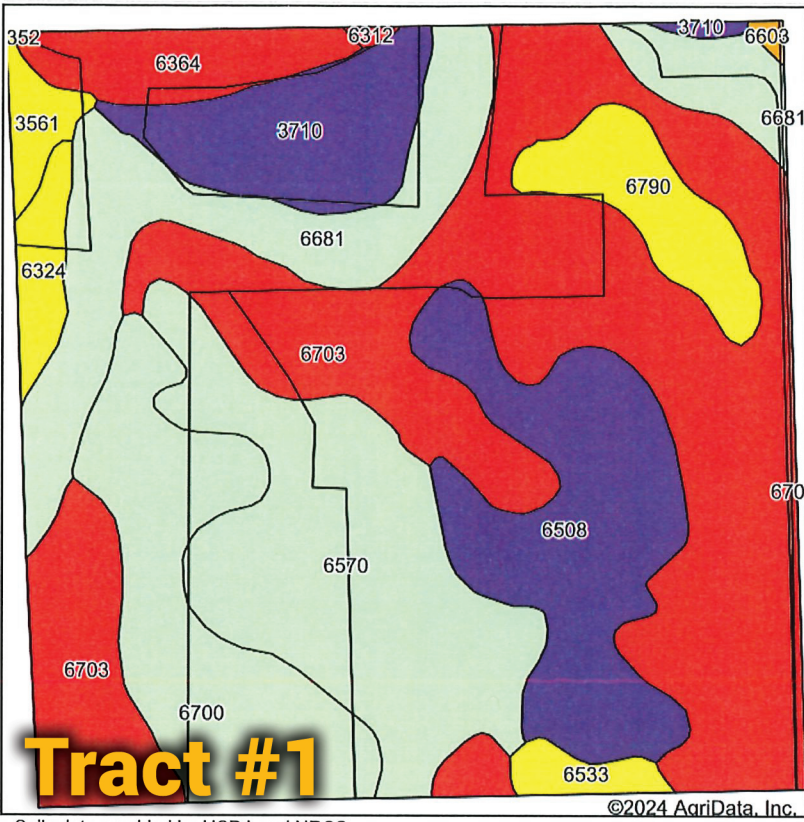


Soils Map



State: **Nebraska**
 County: **Stanton**
 Location: **1-23N-3E**
 Township: **Pilger**
 Acres: **159.44**
 Date: **8/21/2024**



Maps Provided By:
surety
 CUSTOMIZED ONLINE MAPPING
 © AgriData, Inc. 2023 www.AgriDataInc.com



Tract #1

Soils data provided by USDA and NRCS.

©2024 AgriData, Inc.

Area Symbol: NE039, Soil Area Version: 23
 Area Symbol: NE167, Soil Area Version: 23

Code	Soil Description	Acres	Percent of field	SRPG Legend	Non-Irr Class *c	Irr Class *c	SRPG	Corn Bu	Corn Irrigated Bu	Winter wheat Bu	*n NCCPI Soybeans
6703	Thurman loamy fine sand, 2 to 6 percent slopes	54.13	33.9%		Ive	Ive	32				34
6570	Thurman loamy fine sand, terrace, 0 to 2 percent slopes	23.84	15.0%		IIle	IIle					31
6508	Blendon fine sandy loam, 0 to 2 percent slopes	18.49	11.6%		IIs	Ile	52	65	137		56
6681	Crofton silt loam, 17 to 30 percent slopes, eroded	18.12	11.4%		VIe						36
6700	Thurman loamy fine sand, 0 to 2 percent slopes	16.57	10.4%		IIle	IIle					33
3710	Cass fine sandy loam, 0 to 2 percent slopes, rarely flooded	9.56	6.0%		IIw	IIw	54	69	131	1	42
6790	Loretto fine sandy loam, 2 to 6 percent slopes	6.00	3.8%		IIle	IIle	66	81	156		61
6364	Obert silty clay loam, frequently ponded	5.20	3.3%		VIw		24				11
6324	Coleridge silty clay loam, 0 to 2 percent slopes, occasionally flooded	2.57	1.6%		IIw	IIw	69				74
3561	Hobbs silt loam, 0 to 2 percent slopes, occasionally flooded, cool	1.94	1.2%		IIw	IIw	69				78
6533	Loretto fine sandy loam, 0 to 2 percent slopes	1.63	1.0%		Ile	Ile	68				71

Code	Soil Description	Acres	Percent of field	SRPG Legend	Non-Irr Class *c	Irr Class *c	SRPG	Corn Bu	Corn Irrigated Bu	Winter wheat Bu	*n NCCPI Soybeans
6703	Thurman loamy fine sand, 2 to 6 percent slopes	0.87	0.5%		Ive	Ive	32				34
6603	Alcester silty clay loam, 2 to 6 percent slopes	0.22	0.1%		Ile	IIle	73				72
6312	Barney loam, 0 to 2 percent slopes, frequently flooded	0.20	0.1%		Vw		25	2	5	1	15
6681	Crofton silt loam, 17 to 30 percent slopes, eroded	0.10	0.1%		VIe						36
Weighted Average											
					3.57	*-	26.4	14.7	29.6	0.1	*n 38.6